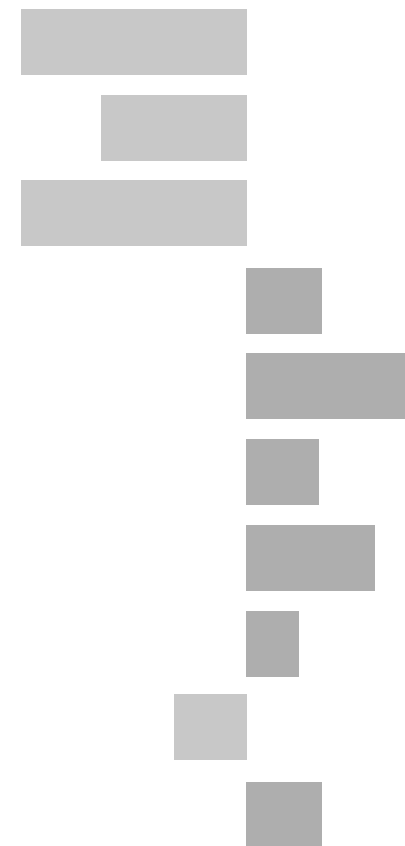


Wigston Poplars Electoral Division

2011 Census Key Statistics

Alex Lea
May 2013

Research and Insight Team
Leicestershire County Council



Alex Lea

Research & Insight Manager

Research & Insight Team
Strategy, Partnerships & Communities
Leicestershire County Council
County Hall
Glenfield
Leicester LE3 8RB

Tel 0116 305 6803

Email alex.lea@leics.gov.uk

Produced by the Research and Insight Team at Leicestershire County Council.

Whilst every effort has been made to ensure the accuracy of the information contained within this report, Leicestershire County Council cannot be held responsible for any errors or omission relating to the data contained within the report.

CONTENTS

Introduction

About this Report	4
2011 Census	4
Data	5
Census Geography	5
Indicator Changes 2001-11	6

Population

KS101EW - Usual Resident Population	7
KS102EW - Age Structure	7

Households

KS105EW - Household Composition	8
KS402EW - Tenure	9

Health and Caring

KS301EW - Health and Provision of Unpaid Care	9
---	---

Ethnicity

KS201EW - Ethnic Group	10
------------------------	----

Economy

KS601EW - Economic Activity	11
KS605EW - Industry	12

Transport

KS404EW - Car and Van Availability	13
QS701EW- Method of Travel to Work	13

INTRODUCTION

ABOUT THIS REPORT

This report provides a broad overview of the 2011 Census Key Statistics data, released by the Office for National Statistics on 30th January 2013, as part of the Second Release. This report summarises a selection of key headline datasets of this release for Leicestershire Electoral Divisions (EDs).

The Research and Insight Team at Leicestershire County Council has used data from the Second release to create an interactive Tableau dashboard containing 32 datasets covering the following geographies:

- England
- East Midlands
- East Midlands counties . Including Leicestershire
- Leicester City and Rutland Unitary Authorities
- Leicestershire districts

In addition, a headline report covers the results for Leicestershire and the seven districts that make up the county. The dashboard and report are available at the following links:

Census 2011 Key Statistics Dashboard

<http://public.tableausoftware.com/views/LAKeyStatsDashboard/Dashboard>

May 2013

Census 2011 Key Statistics Headline Report

http://www.lsr-online.org/reports/census_2011_key_statistics_headline_report/download/1/Census%202011%20Second%20Release%20FINAL.pdf

2011 CENSUS

Census statistics help paint a picture of the nation and how we live. They provide a detailed snapshot of the population and its characteristics, and underpin funding allocation to provide public services.¹ Data from the 2011 Census is made available at a variety of different levels of geography and in various releases.

The Key Statistics data covers a broad range of socio-economic topics, including data on ethnicity, health and employment. Each Key Statistic dataset is referred to by its unique three-digit code with the 'KS' prefix to denote a Key statistic (e.g. KS101). These are used throughout the report.

A full list of the 35 Key Statistics data tables are available here:

<http://www.ons.gov.uk/ons/publications/re-reference-tables.html?edition=tcm%3A77-286262>

¹ Office for National Statistics (ONS), 2013.

Further results from the census will be released throughout 2013, for more information, please visit:

<http://www.lsr-online.org/census-2011.html>

More information on the 2011 Census can be found here:

<http://www.ons.gov.uk/ons/guide-method/census/2011/index.html>

DATA

Data has been compiled for Leicestershire Electoral Divisions, covering the key datasets from the 2011 Census Key statistics.

Figures for 2011 and 2001 are included, along with the overall and percentage change between the two censuses. Data for each indicator is presented in a table and chart.

Population data is displayed in a table, a population pyramid and a chart showing percentage change between 2001 and 2011. All other data is displayed in tables, and charts. Charts for change between 2001 and 2011 are coloured according to the degree of change between the two censuses; grey corresponds to smallest change and green the largest change. A marker indicates the average figure for all Leicestershire Electoral Divisions.

GEOGRAPHY

Maps for all County Council Electoral Divisions can be found here:

http://www.leics.gov.uk/index/your_council/local_democracy/conductofcouncillorsandemployees/electoraldivisionmapsindex/electoraldivisionmaps.htm

As Census data is not made available for Electoral Divisions, smaller areas, called Lower Super Output Areas (LSOAs) have been used as building blocks for the figures included in this report. LSOAs are small parcels of geography, containing a minimum of 1,000 people, a maximum of 3,000 and an average of 1,500. LSOAs were initially developed for the 2001 Census and are used to release a range of neighbourhood-level datasets from various sources. There are 396 LSOAs in Leicestershire.

In some instances, LSOAs do not fit neatly within Electoral Divisions and in these cases, population weighted centroids - representing the 'centre of gravity' for population within an area - have been used in order to assign each LSOA to an Electoral Division. Electoral Divisions that fall within this category are indicated with a (*).

More information on Lower Super Output Areas can be found here:

<http://www.ons.gov.uk/ons/guide-method/geography/beginner-s-guide/census/super-output-areas--soas-/index.html>

INDICATOR CHANGES 2001-11

The following questions were asked in slightly different ways in 2011 compared to 2001. As such, care should be taken when making comparison between years.

KS201EW : Ethnic Group

Asian/Asian British: Chinese
Mixed/multiple ethnic group: Other Mixed
Mixed/multiple ethnic group: White and Asian
Mixed/multiple ethnic group: White and Black African
Mixed/multiple ethnic group: White and Black Caribbean
Other ethnic group: Any other ethnic group
White: English/Welsh/Scottish/Northern Irish/British
White: Other White

KS301EW : Health and Provision of Unpaid Care

Day-to-day activities limited
Day-to-day activities limited: Age 16 to 64
Day-to-day activities not limited
Fair health
Very/ bad Health
Very/ good Health

KS601EW : Economic Activity

All usual residents aged 16 and over
Economically active: Employee: Full-time
Economically active: Employee: Part-time
Economically active: Full-time student

Economically active: Self-employed
Economically active: Unemployed
Economically inactive: Long-term sick or disabled
Economically inactive: Looking after home or family
Economically inactive: Other
Economically inactive: Retired
Economically inactive: Student (including full-time)
Long-term unemployed
Unemployed: Age 50 and over
Unemployed: Never worked

KS605EW : Industry

All usual residents aged 16 and over in employment
A Agriculture, forestry and fishing
B Mining and quarrying
C Manufacturing
D, F Electricity, gas, steam, air conditioning supply etc
F Construction
G Wholesale and retail trade; repair of motor vehicles etc
H, J Transport, storage, information and communication
I Accommodation and food service activities
K Financial and insurance activities
L,M,N Real estate activities Professional, scientific etc
O Public administration and defence etc
P Education
Q Human health and social work activities
R, S, T, U Other

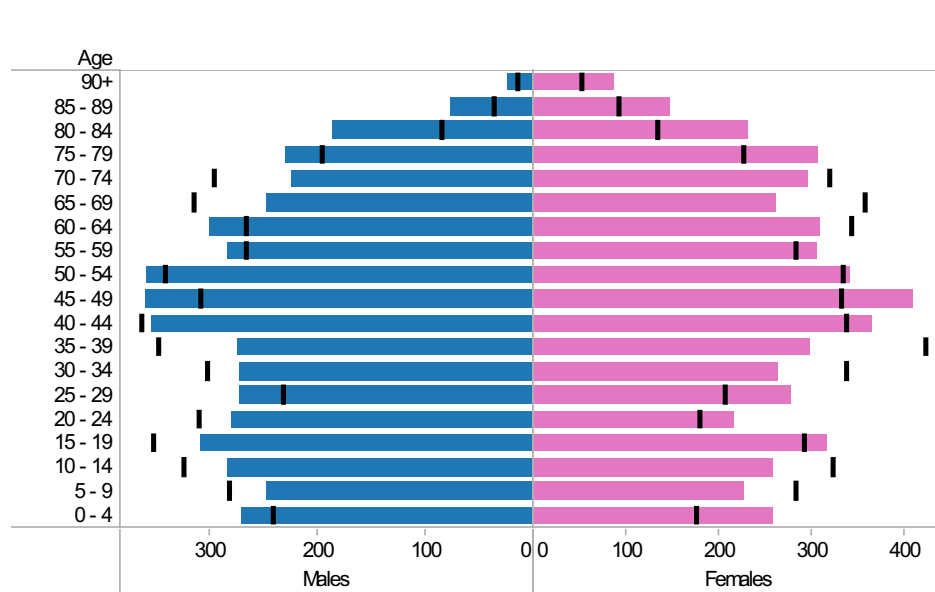
Wigston Poplars* ED: KS101EW : Usual Resident Population, KS102EW : Age Structure

■ Males
 ■ Females
 ■ Persons

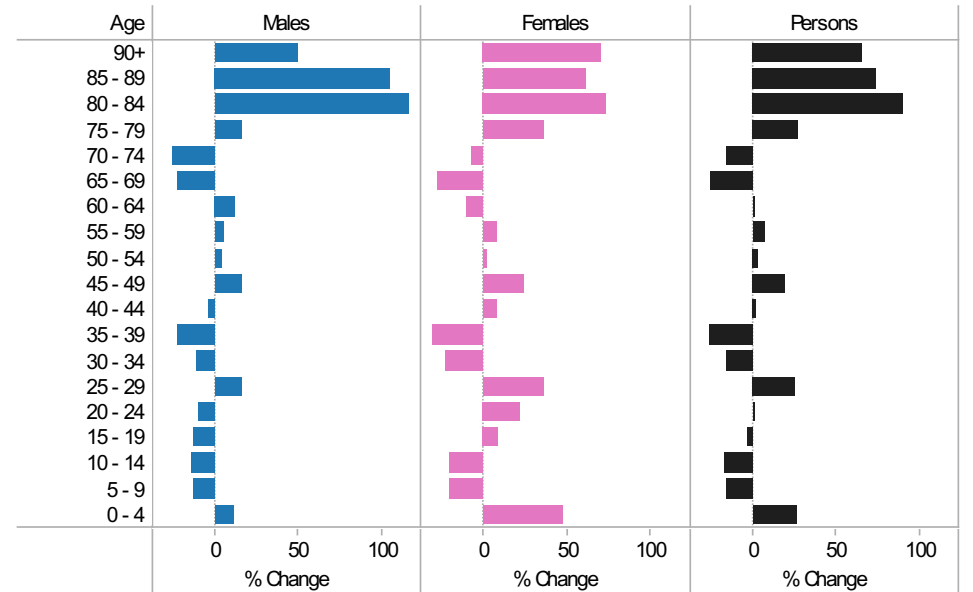
2001-11 Population by sex and quinary age band

Age	Males			Females			Persons		
	2001	2011	Change 2001-11	2001	2011	Change 2001-11	2001	2011	Change 2001-11
90+	16	24	8	51	87	36	67	111	44
85 - 89	37	76	39	91	147	56	128	223	95
80 - 84	86	186	100	133	231	98	219	417	198
75 - 79	197	230	33	225	307	82	422	537	115
70 - 74	296	223	-73	318	297	-21	614	520	-94
65 - 69	315	246	-69	357	262	-95	672	508	-164
60 - 64	266	300	34	343	310	-33	609	610	1
55 - 59	267	283	16	282	306	24	549	589	40
50 - 54	341	357	16	334	343	9	675	700	25
45 - 49	309	359	50	331	410	79	640	769	129
40 - 44	364	352	-12	337	365	28	701	717	16
35 - 39	348	273	-75	423	298	-125	771	571	-200
30 - 34	302	271	-31	336	264	-72	638	535	-103
25 - 29	233	271	38	205	279	74	438	550	112
20 - 24	311	280	-31	178	217	39	489	497	8
15 - 19	352	308	-44	291	317	26	643	625	-18
10 - 14	325	282	-43	322	259	-63	647	541	-106
5 - 9	282	246	-36	282	227	-55	564	473	-91
0 - 4	242	270	28	175	258	83	417	528	111
All Ages	4,889	4,837	-52	5,014	5,184	170	9,903	10,021	118

2011 (coloured bars) and 2001 (black marks) population by sex and quinary age



2001-11 Percentage change by sex and quinary age band



Wigston Poplars* ED
KS105EW : Household Composition, 2001-11

Coloured bar - data for Electoral Division
 Grey circle - average for all Leicestershire Electoral Divisions

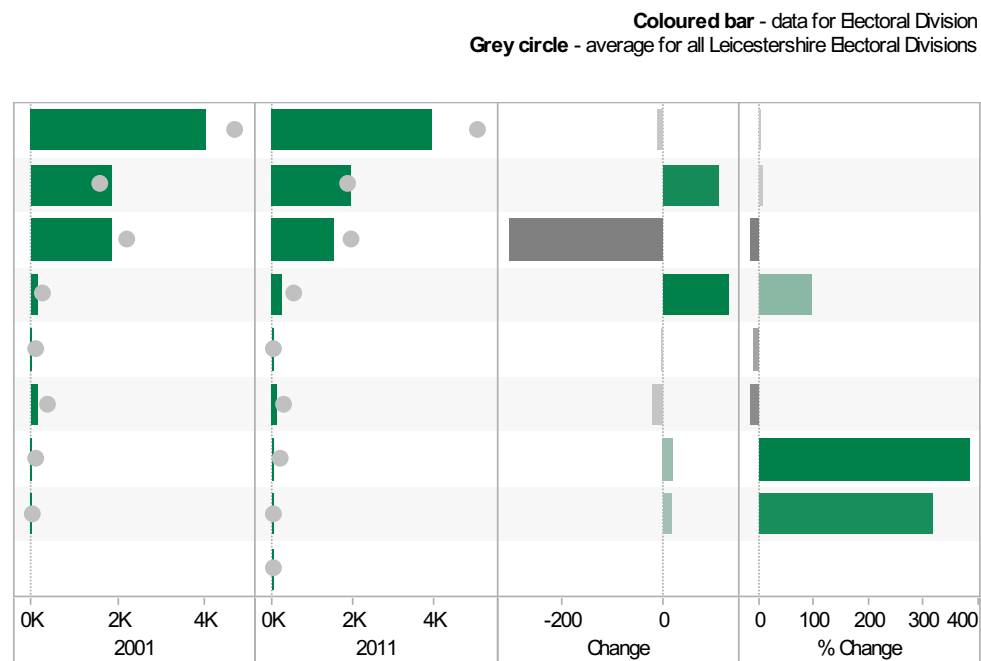
	2001	2011	Change	% Change
All Households	4,005	3,996	-9	0
One Family Only; All Aged 65 and Over	640	544	-96	-15
One Family Only; Cohabiting Couple; All Children Non-Dependent	14	21	7	50
One Family Only; Cohabiting Couple; Dependent Children	95	138	43	45
One Family Only; Cohabiting Couple; No Children	125	138	13	10
One Family Only; Lone Parent; All Children Non-Dependent	138	177	39	28
One Family Only; Lone Parent; Dependent Children	162	135	-27	-17
One Family Only; Married or Same-Sex Civil Partnership Couple; All Children Non-Dependent	315	372	57	18
One Family Only; Married or Same-Sex Civil Partnership Couple; Dependent Children	805	711	-94	-12
One Family Only; Married or Same-Sex Civil Partnership Couple; No Children	574	485	-89	-16
One Person Household; Aged 65 and Over	593	632	39	7
One Person Household; Other	376	386	10	3
Other Household Types; All Aged 65 and Over	13	14	1	8
Other Household Types; All Full-Time Students	0	1	1	
Other Household Types; Other	82	112	30	37
Other Household Types; With Dependent Children	73	130	57	78



Source: Office for National Statistics (ONS), 2013.
 Produced by the Research and Insight Team, Leicestershire County Council.

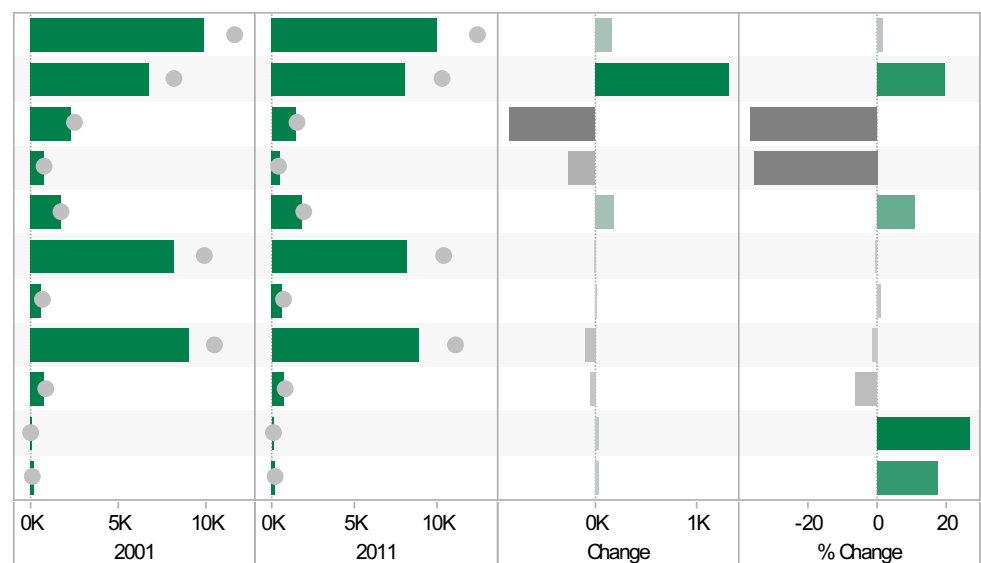
Wigston Poplars* ED
KS402EW: Tenure, 2001-11

	2001	2011	Change	% Change
All Households	4,006	3,996	-10	0
Owned; Owned Outright	1,839	1,951	112	6
Owned; Owned with a Mortgage or Loan	1,850	1,546	-304	-16
Private Rented; Private Landlord or Letting Agency	137	267	130	95
Private Rented; Other	36	33	-3	-8
Social Rented; Rented from Council (Local Authority)	132	114	-18	-14
Social Rented; Other	6	29	23	383
Shared Ownership (Part Owned and Part Rented)	6	25	19	317
Living Rent Free		31		



Wigston Poplars* ED
KS301EW: Health and Provision of Unpaid Care, 2001-11

	2001	2011	Change	% Change
All usual residents	9,863	10,021	158	2
Very/ good Health	6,708	8,015	1,307	19
Fair health	2,364	1,495	-869	-37
Very/ bad Health	791	511	-280	-35
Day-to-day activities limited	1,700	1,881	181	11
Day-to-day activities not limited	8,163	8,140	-23	0
Day-to-day activities limited a lot: Age 16 to 64	635	643	8	1
Provides no unpaid care	9,000	8,885	-115	-1
Provides 1 to 19 hours unpaid care a week	805	756	-49	-6
Provides 20 to 49 hours unpaid care a week	120	152	32	27
Provides 50 or more hours unpaid care a week	194	228	34	18

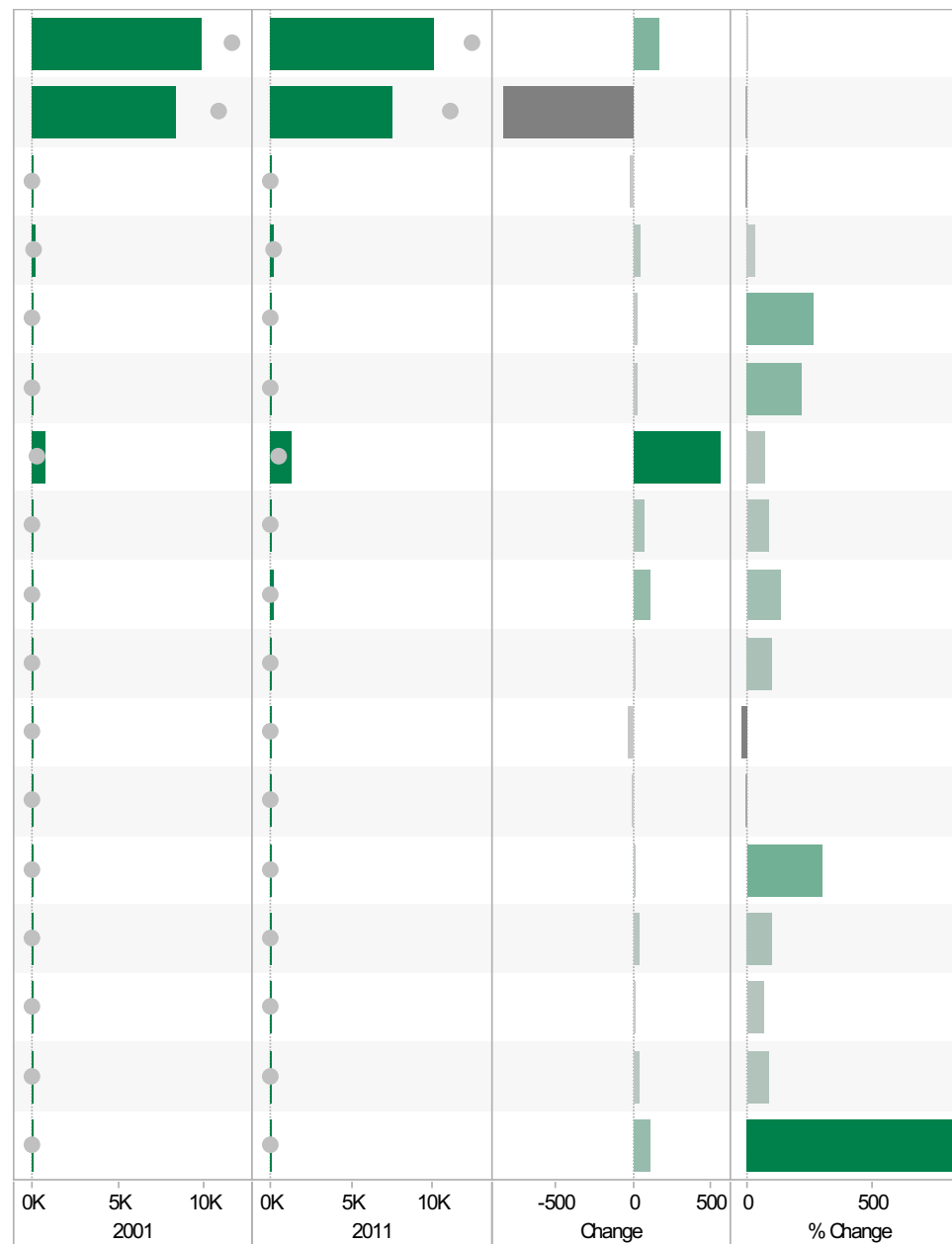


Source: Office for National Statistics (ONS), 2013.
 Produced by the Research and Insight Team, Leicestershire County Council.

Wigston Poplars* ED
KS201EW : Ethnic Group, 2001-11

Coloured bar - data for Electoral Division
Grey circle - average for all Leicestershire Electoral Divisions

	2001	2011	Change	% Change
All usual residents	9,857	10,021	164	2
White: English/Welsh/Scottish/Northern Irish/British	8,379	7,542	-837	-10
White: Irish	113	98	-15	-13
White: Other White	145	192	47	32
Asian/Asian British: Bangladeshi	8	29	21	263
Asian/Asian British: Chinese	10	32	22	220
Asian/Asian British: Indian	784	1,339	555	71
Asian/Asian British: Other Asian	80	148	68	85
Asian/Asian British: Pakistani	88	202	114	130
Black/African/Caribbean/Black British: African	15	30	15	100
Black/African/Caribbean/Black British: Caribbean	112	82	-30	-27
Black/African/Caribbean/Black British: Other Black	16	14	-2	-13
Mixed/multiple ethnic group: Other Mixed	6	24	18	300
Mixed/multiple ethnic group: White and Asian	38	76	38	100
Mixed/multiple ethnic group: White and Black African	9	15	6	67
Mixed/multiple ethnic group: White and Black Caribbean	41	75	34	83
Other ethnic group: Any other ethnic group	13	123	110	846

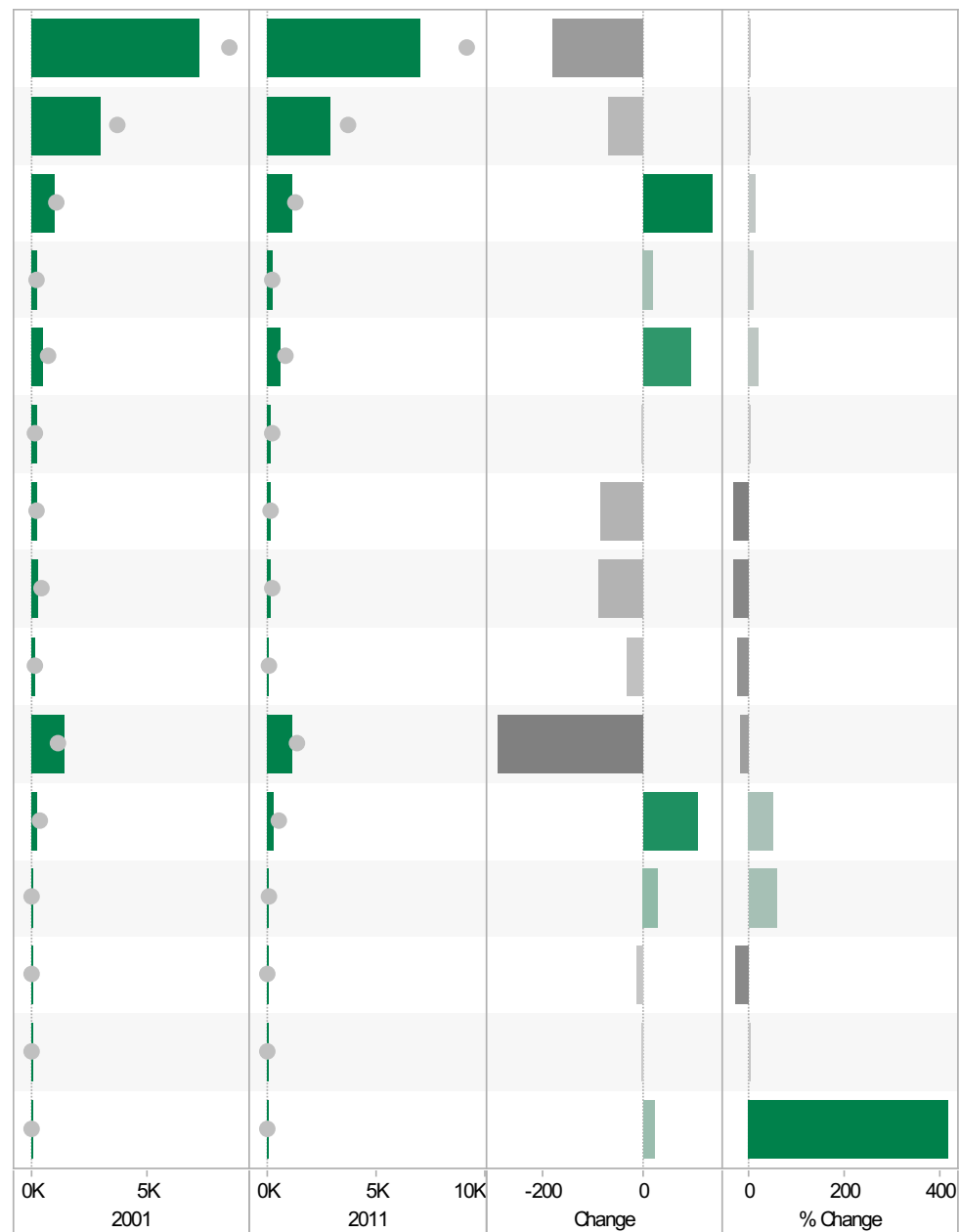


Source: Office for National Statistics (ONS), 2013.
 Produced by the Research and Insight Team, Leicestershire County Council.

Wigston Poplars* ED
KS601EW : Economic Activity, 2001-11

Coloured bar - data for Electoral Division
Grey circle - average for all Leicestershire Electoral Divisions

	2001	2011	Change	% Change
All usual residents aged 16 and over	7,231	7,050	-181	-3
Economically active: Employee: Full-time	2,974	2,904	-70	-2
Economically active: Employee: Part-time	1,034	1,172	138	13
Economically active: Full-time student	201	220	19	9
Economically active: Self-employed	500	596	96	19
Economically active: Unemployed	188	184	-4	-2
Economically inactive: Long-term sick or disabled	249	163	-86	-35
Economically inactive: Looking after home or family	280	192	-88	-31
Economically inactive: Other	132	98	-34	-26
Economically inactive: Retired	1,458	1,166	-292	-20
Economically inactive: Student (including full-time students)	215	324	109	51
Long-term unemployed	54	85	31	57
Unemployed: Age 16 to 24	47	33	-14	-30
Unemployed: Age 50 and over	49	48	-1	-2
Unemployed: Never worked	6	31	25	417

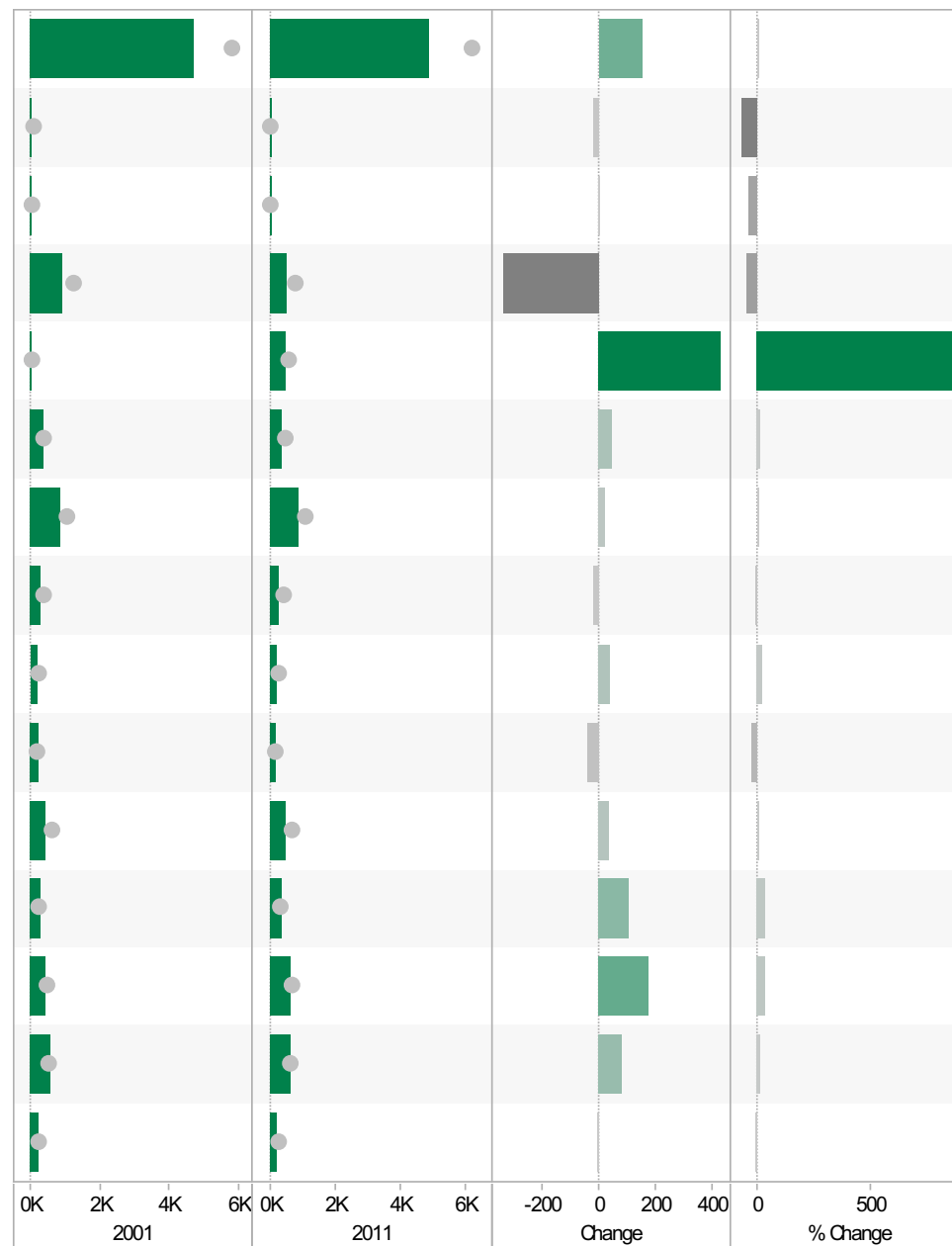


Source: Office for National Statistics (ONS), 2013.
 Produced by the Research and Insight Team, Leicestershire County Council.

Wigston Poplars* ED
KS605EW : Industry, 2001-11

Coloured bar - data for Electoral Division
Grey circle - average for all Leicestershire Electoral Divisions

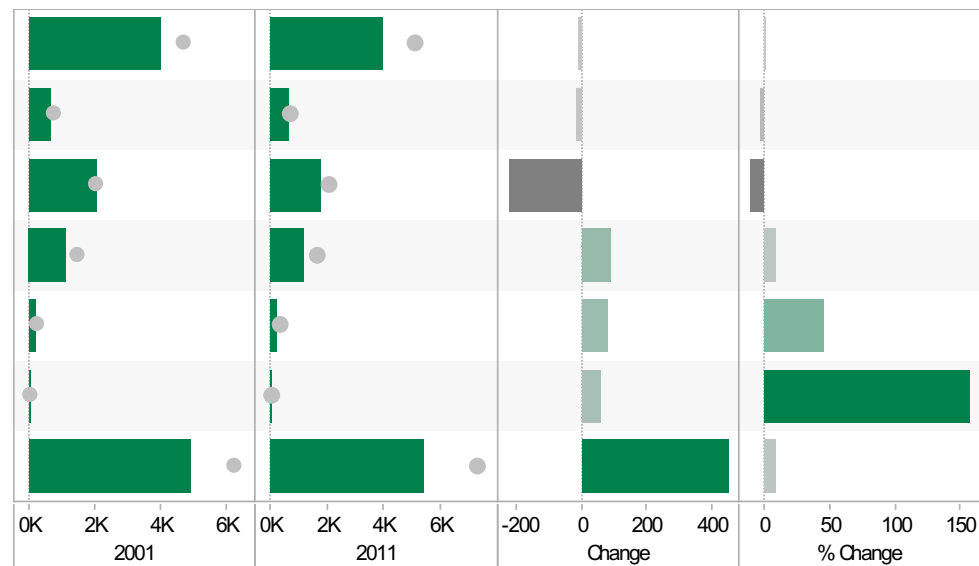
	2001	2011	Change	% Change
All usual residents aged 16 and over in employment	4,690	4,847	157	3
A Agriculture, forestry and fishing	24	8	-16	-67
B Mining and quarrying	3	2	-1	-33
C Manufacturing	887	551	-336	-38
D, F Electricity, gas, steam, air conditioning supply, water and sewerage	48	475	427	890
F Construction	347	397	50	14
G Wholesale and retail trade; repair of motor vehicles and motor cycles	856	879	23	3
H, J Transport, storage, information and communication	291	274	-17	-6
I Accommodation and food service activities	169	211	42	25
K Financial and insurance activities	223	184	-39	-17
L, M, N Real estate activities Professional, scientific and technical activities Administrative and support service activities	415	450	35	8
O Public administration and defence; compulsory social security	252	358	106	42
P Education	426	604	178	42
Q Human health and social work activities	536	617	81	15
R, S, T, U Other	213	210	-3	-1



Source: Office for National Statistics (ONS), 2013.
 Produced by the Research and Insight Team, Leicestershire County Council.

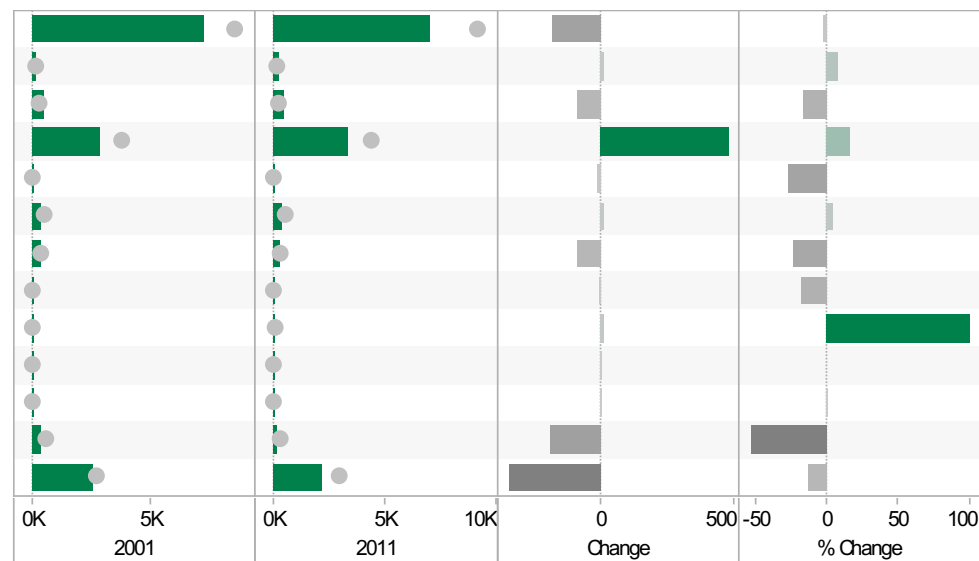
Wigston Poplars* ED KS404EW : Car and Van Availability, 2001-11

	2001	2011	Change	% Change
All Households	4,005	3,996	-9	0
No Cars or Vans in Household	662	646	-16	-2
1 Car or Van in Household	2,027	1,803	-224	-11
2 Cars or Vans in Household	1,099	1,191	92	8
3 Cars or Vans in Household	180	261	81	45
4 or More Cars or Vans in Household	37	95	58	157
All Cars or Vans in the Area	4,930	5,382	452	9



Wigston Poplars* ED QS701EW : Method of Travel to Work, 2001-11

	2001	2011	Change	% Change
All Usual Residents Aged 16 to 74	7,229	7,050	-179	-2
Bicycle	175	189	14	8
Bus, Minibus or Coach	510	424	-86	-17
Driving a Car or Van	2,816	3,297	481	17
Motorcycle, Scooter or Moped	45	33	-12	-27
On Foot	385	403	18	5
Passenger in a Car or Van	352	268	-84	-24
Taxi	17	14	-3	-18
Train	17	34	17	100
Underground, Metro, Light Rail, Tram	0	5	5	
Other Method of Travel to Work	20	20	0	0
Work Mainly at or From Home	347	160	-187	-54
Not in Employment	2,545	2,203	-342	-13



Source: Office for National Statistics (ONS), 2013.
Produced by the Research and Insight Team, Leicestershire County Council.

If you require information contained in this leaflet in another version e.g. large print, Braille, tape or alternative language please telephone: 0116 305 6803, Fax: 0116 305 7271 or Minicom: 0116 305 6160.

ਜੇ ਆਪ ਆ ਮਾਭਿਨੀ ਆਪਨੀ ਆਧਾਮਾਂ ਸਮਝਵਾਮਾਂ ਥੋੜੀ ਮਦਦ ਈਝਤਾਂ ਡੋ ਤੋ 0116 305 6803 ਨੰਬਰ ਪਰ ਫ਼ੋਨ ਕਰਥੋ ਅਨੇ ਅਮੇ ਆਪਨੇ ਮਦਦ ਕਰਵਾ ਅਵਥਾ ਕਰੀਥੁੰ.

ਜੇਕਰ ਤੁਹਾਨੂੰ ਇਸ ਜਾਣਕਾਰੀ ਨੂੰ ਸਮਝਣ ਵਿਚ ਕੁਝ ਮਦਦ ਚਾਹੀਦੀ ਹੈ ਤਾਂ ਕਿਰਪਾ ਕਰਕੇ 0116 305 6803 ਨੰਬਰ ਤੇ ਫ਼ੋਨ ਕਰੋ ਅਤੇ ਅਸੀਂ ਤੁਹਾਡੀ ਮਦਦ ਲਈ ਕਿਸੇ ਦਾ ਪ੍ਰਬੰਧ ਕਰ ਦਵਾਂਗੇ।

এই তথ্য নিজের ভাষায় বুঝার জন্য আপনার যদি কোন সাহায্যের প্রয়োজন হয়, তবে 0116 305 6803 এই নম্বরে ফোন করলে আমরা উপযুক্ত ব্যক্তির ব্যবস্থা করবো।

اگر آپ کو یہ معلومات سمجھنے میں کچھ مدد درکار ہے تو براہ مہربانی اس نمبر پر کال کریں اور ہم آپ کی مدد کے لئے کسی کا انتظام کر دیں گے۔ 0116 305 6803

假如閣下需要幫助，用你的語言去明白這些資訊，請致電 0116 305 6803，我們會安排有關人員為你提供幫助。

Jeżeli potrzebujesz pomocy w zrozumieniu tej informacji w Twoim języku, zadzwoń pod numer 0116 305 6803, a my Ci dopomożemy.

Research & Insight Team
Strategy, Partnerships & Communities
Chief Executive's Department
Leicestershire County Council
County Hall
Glenfield
Leicester
LE3 8RA

ri@leics.gov.uk
www.lsr-online.org