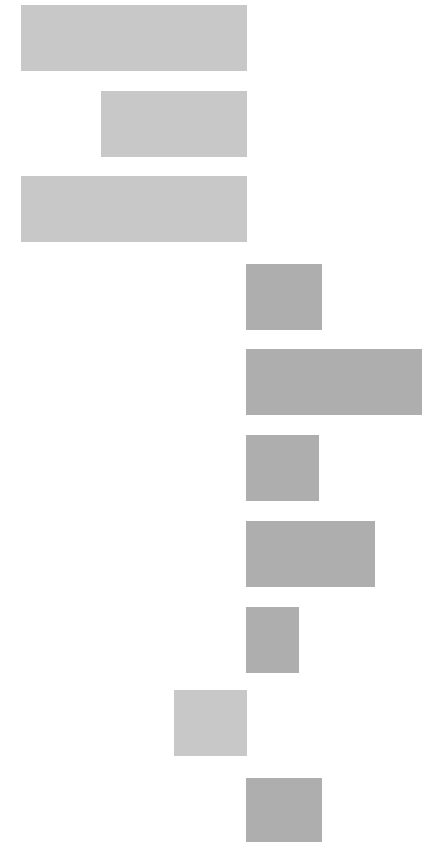


Wigston South Electoral Division

2011 Census Key Statistics

Alex Lea
May 2013

Research and Insight Team
Leicestershire County Council



Alex Lea

Research & Insight Manager

Research & Insight Team
Strategy, Partnerships & Communities
Leicestershire County Council
County Hall
Glenfield
Leicester LE3 8RB

Tel 0116 305 6803

Email alex.lea@leics.gov.uk

Produced by the Research and Insight Team at Leicestershire County Council.

Whilst every effort has been made to ensure the accuracy of the information contained within this report, Leicestershire County Council cannot be held responsible for any errors or omission relating to the data contained within the report.

CONTENTS

Introduction

About this Report	4
2011 Census	4
Data	5
Census Geography	5
Indicator Changes 2001-11	6

Population

KS101EW - Usual Resident Population	7
KS102EW - Age Structure	7

Households

KS105EW - Household Composition	8
KS402EW - Tenure	9

Health and Caring

KS301EW - Health and Provision of Unpaid Care	9
---	---

Ethnicity

KS201EW - Ethnic Group	10
------------------------	----

Economy

KS601EW - Economic Activity	11
KS605EW - Industry	12

Transport

KS404EW - Car and Van Availability	13
QS701EW- Method of Travel to Work	13

INTRODUCTION

ABOUT THIS REPORT

This report provides a broad overview of the 2011 Census Key Statistics data, released by the Office for National Statistics on 30th January 2013, as part of the Second Release. This report summarises a selection of key headline datasets of this release for Leicestershire Electoral Divisions (EDs).

The Research and Insight Team at Leicestershire County Council has used data from the Second release to create an interactive Tableau dashboard containing 32 datasets covering the following geographies:

- England
- East Midlands
- East Midlands counties . Including Leicestershire
- Leicester City and Rutland Unitary Authorities
- Leicestershire districts

In addition, a headline report covers the results for Leicestershire and the seven districts that make up the county. The dashboard and report are available at the following links:

Census 2011 Key Statistics Dashboard

<http://public.tableausoftware.com/views/LAKeyStatsDashboard/Dashboard>

May 2013

Census 2011 Key Statistics Headline Report

http://www.lsr-online.org/reports/census_2011_key_statistics_headline_report/download/1/Census%202011%20Second%20Release%20FINAL.pdf

2011 CENSUS

Census statistics help paint a picture of the nation and how we live. They provide a detailed snapshot of the population and its characteristics, and underpin funding allocation to provide public services.¹ Data from the 2011 Census is made available at a variety of different levels of geography and in various releases.

The Key Statistics data covers a broad range of socio-economic topics, including data on ethnicity, health and employment. Each Key Statistic dataset is referred to by its unique three-digit code with the 'KS' prefix to denote a Key statistic (e.g. KS101). These are used throughout the report.

A full list of the 35 Key Statistics data tables are available here:

<http://www.ons.gov.uk/ons/publications/re-reference-tables.html?edition=tcm%3A77-286262>

¹ Office for National Statistics (ONS), 2013.

Further results from the census will be released throughout 2013, for more information, please visit:

<http://www.lsr-online.org/census-2011.html>

More information on the 2011 Census can be found here:

<http://www.ons.gov.uk/ons/guide-method/census/2011/index.html>

DATA

Data has been compiled for Leicestershire Electoral Divisions, covering the key datasets from the 2011 Census Key statistics.

Figures for 2011 and 2001 are included, along with the overall and percentage change between the two censuses. Data for each indicator is presented in a table and chart.

Population data is displayed in a table, a population pyramid and a chart showing percentage change between 2001 and 2011. All other data is displayed in tables, and charts. Charts for change between 2001 and 2011 are coloured according to the degree of change between the two censuses; grey corresponds to smallest change and green the largest change. A marker indicates the average figure for all Leicestershire Electoral Divisions.

GEOGRAPHY

Maps for all County Council Electoral Divisions can be found here:

http://www.leics.gov.uk/index/your_council/local_democracy/conductofcouncillorsandemployees/electoraldivisionmapsindex/electoraldivisionmaps.htm

As Census data is not made available for Electoral Divisions, smaller areas, called Lower Super Output Areas (LSOAs) have been used as building blocks for the figures included in this report. LSOAs are small parcels of geography, containing a minimum of 1,000 people, a maximum of 3,000 and an average of 1,500. LSOAs were initially developed for the 2001 Census and are used to release a range of neighbourhood-level datasets from various sources. There are 396 LSOAs in Leicestershire.

In some instances, LSOAs do not fit neatly within Electoral Divisions and in these cases, population weighted centroids - representing the 'centre of gravity' for population within an area - have been used in order to assign each LSOA to an Electoral Division. Electoral Divisions that fall within this category are indicated with a (*).

More information on Lower Super Output Areas can be found here:

<http://www.ons.gov.uk/ons/guide-method/geography/beginner-s-guide/census/super-output-areas--soas-/index.html>

INDICATOR CHANGES 2001-11

The following questions were asked in slightly different ways in 2011 compared to 2001. As such, care should be taken when making comparison between years.

KS201EW : Ethnic Group

Asian/Asian British: Chinese
Mixed/multiple ethnic group: Other Mixed
Mixed/multiple ethnic group: White and Asian
Mixed/multiple ethnic group: White and Black African
Mixed/multiple ethnic group: White and Black Caribbean
Other ethnic group: Any other ethnic group
White: English/Welsh/Scottish/Northern Irish/British
White: Other White

KS301EW : Health and Provision of Unpaid Care

Day-to-day activities limited
Day-to-day activities limited: Age 16 to 64
Day-to-day activities not limited
Fair health
Very/ bad Health
Very/ good Health

KS601EW : Economic Activity

All usual residents aged 16 and over
Economically active: Employee: Full-time
Economically active: Employee: Part-time
Economically active: Full-time student

Economically active: Self-employed
Economically active: Unemployed
Economically inactive: Long-term sick or disabled
Economically inactive: Looking after home or family
Economically inactive: Other
Economically inactive: Retired
Economically inactive: Student (including full-time)
Long-term unemployed
Unemployed: Age 50 and over
Unemployed: Never worked

KS605EW : Industry

All usual residents aged 16 and over in employment
A Agriculture, forestry and fishing
B Mining and quarrying
C Manufacturing
D, F Electricity, gas, steam, air conditioning supply etc
F Construction
G Wholesale and retail trade; repair of motor vehicles etc
H, J Transport, storage, information and communication
I Accommodation and food service activities
K Financial and insurance activities
L,M,N Real estate activities Professional, scientific etc
O Public administration and defence etc
P Education
Q Human health and social work activities
R, S, T, U Other

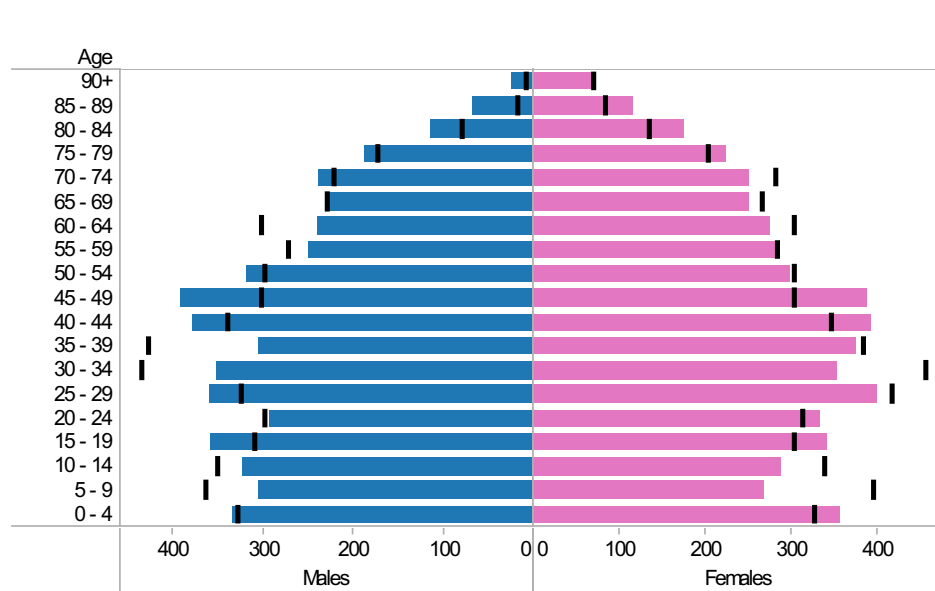
Wigston South* ED: KS101EW : Usual Resident Population, KS102EW : Age Structure

■ Males
 ■ Females
 ■ Persons

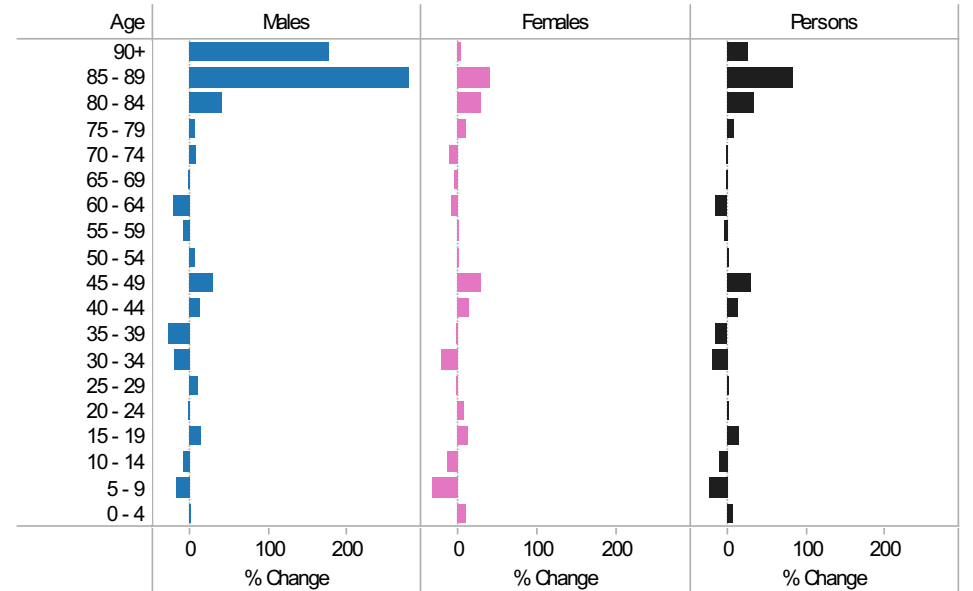
2001-11 Population by sex and quinary age band

Age	Males			Females			Persons		
	2001	2011	Change 2001-11	2001	2011	Change 2001-11	2001	2011	Change 2001-11
90+	9	25	16	68	71	3	77	96	19
85 - 89	18	68	50	83	116	33	101	184	83
80 - 84	81	114	33	134	174	40	215	288	73
75 - 79	175	187	12	202	223	21	377	410	33
70 - 74	222	238	16	281	251	-30	503	489	-14
65 - 69	230	226	-4	265	252	-13	495	478	-17
60 - 64	303	239	-64	303	275	-28	606	514	-92
55 - 59	273	250	-23	282	282	0	555	532	-23
50 - 54	300	319	19	303	298	-5	603	617	14
45 - 49	304	391	87	302	389	87	606	780	174
40 - 44	340	379	39	345	392	47	685	771	86
35 - 39	428	305	-123	383	374	-9	811	679	-132
30 - 34	437	353	-84	456	354	-102	893	707	-186
25 - 29	325	359	34	416	400	-16	741	759	18
20 - 24	299	292	-7	312	334	22	611	626	15
15 - 19	311	357	46	303	341	38	614	698	84
10 - 14	352	322	-30	337	289	-48	689	611	-78
5 - 9	366	305	-61	395	268	-127	761	573	-188
0 - 4	330	333	3	325	358	33	655	691	36
All Ages	5,103	5,062	-41	5,495	5,441	-54	10,598	10,503	-95

2011 (coloured bars) and 2001 (black marks) population by sex and quinary age age



2001-11 Percentage change by sex and quinary age band



Wigston South* ED
KS105EW : Household Composition, 2001-11

Coloured bar - data for Electoral Division
 Grey circle - average for all Leicestershire Electoral Divisions

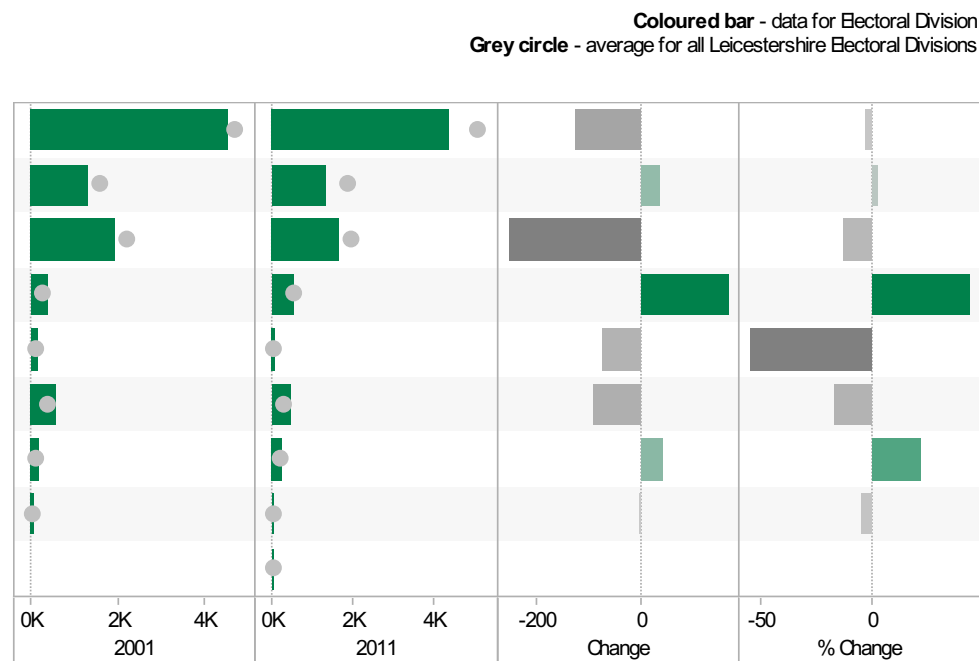
	2001	2011	Change	% Change
All Households	4,539	4,412	-127	-3
One Family Only; All Aged 65 and Over	420	401	-19	-5
One Family Only; Cohabiting Couple; All Children Non-Dependent	13	40	27	208
One Family Only; Cohabiting Couple; Dependent Children	246	306	60	24
One Family Only; Cohabiting Couple; No Children	252	276	24	10
One Family Only; Lone Parent; All Children Non-Dependent	156	184	28	18
One Family Only; Lone Parent; Dependent Children	395	358	-37	-9
One Family Only; Married or Same-Sex Civil Partnership Couple; All Children Non-Dependent	270	263	-7	-3
One Family Only; Married or Same-Sex Civil Partnership Couple; Dependent Children	657	559	-98	-15
One Family Only; Married or Same-Sex Civil Partnership Couple; No Children	590	423	-167	-28
One Person Household; Aged 65 and Over	712	613	-99	-14
One Person Household; Other	624	713	89	14
Other Household Types; All Aged 65 and Over	21	14	-7	-33
Other Household Types; All Full-Time Students	0	1	1	
Other Household Types; Other	115	145	30	26
Other Household Types; With Dependent Children	68	116	48	71



Source: Office for National Statistics (ONS), 2013.
 Produced by the Research and Insight Team, Leicestershire County Council.

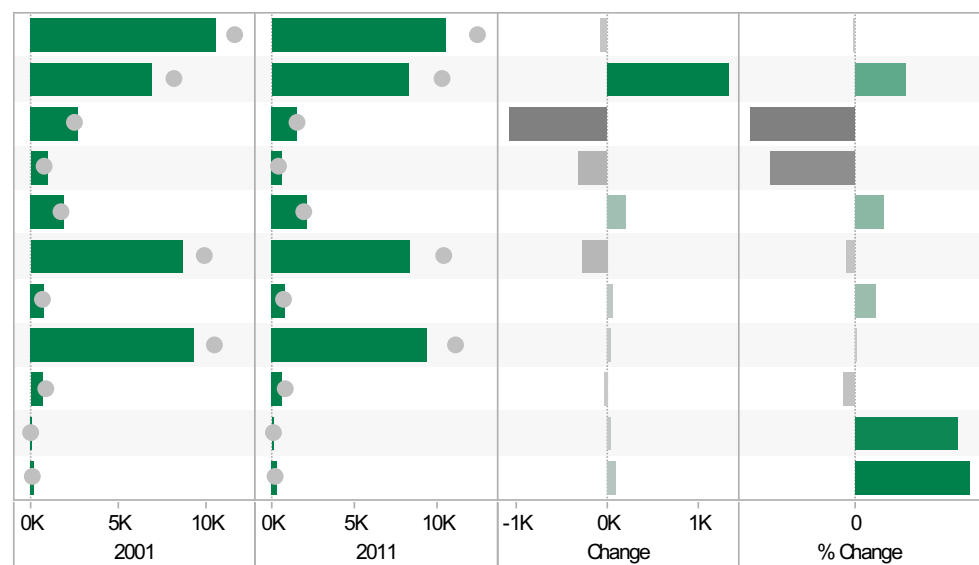
Wigston South* ED
KS402EW: Tenure, 2001-11

	2001	2011	Change	% Change
All Households	4,537	4,412	-125	-3
Owned; Owned Outright	1,296	1,332	36	3
Owned; Owned with a Mortgage or Loan	1,938	1,683	-255	-13
Private Rented; Private Landlord or Letting Agency	384	553	169	44
Private Rented; Other	136	61	-75	-55
Social Rented; Rented from Council (Local Authority)	548	458	-90	-16
Social Rented; Other	187	229	42	22
Shared Ownership (Part Owned and Part Rented)	48	46	-2	-4
Living Rent Free		50		



Wigston South* ED
KS301EW: Health and Provision of Unpaid Care, 2001-11

	2001	2011	Change	% Change
All usual residents	10,566	10,503	-63	-1
Very/ good Health	6,899	8,226	1,327	19
Fair health	2,692	1,613	-1,079	-40
Very/ bad Health	975	664	-311	-32
Day-to-day activities limited	1,928	2,136	208	11
Day-to-day activities not limited	8,638	8,367	-271	-3
Day-to-day activities limited a lot: Age 16 to 64	816	881	65	8
Provides no unpaid care	9,365	9,402	37	0
Provides 1 to 19 hours unpaid care a week	661	634	-27	-4
Provides 20 to 49 hours unpaid care a week	96	134	38	40
Provides 50 or more hours unpaid care a week	232	333	101	44



Source: Office for National Statistics (ONS), 2013.
Produced by the Research and Insight Team, Leicestershire County Council.

Wigston South* ED
KS201EW : Ethnic Group, 2001-11

Coloured bar - data for Electoral Division
Grey circle - average for all Leicestershire Electoral Divisions

	2001	2011	Change	% Change
All usual residents	10,563	10,503	-60	-1
White: English/Welsh/Scottish/Northern Irish/British	10,021	9,547	-474	-5
White: Irish	75	93	18	24
White: Other White	93	133	40	43
Asian/Asian British: Bangladeshi	8	7	-1	-13
Asian/Asian British: Chinese	23	30	7	30
Asian/Asian British: Indian	148	251	103	70
Asian/Asian British: Other Asian	23	56	33	143
Asian/Asian British: Pakistani	10	59	49	490
Black/African/Caribbean/Black British: African	3	20	17	567
Black/African/Caribbean/Black British: Caribbean	39	45	6	15
Black/African/Caribbean/Black British: Other Black	3	8	5	167
Mixed/multiple ethnic group: Other Mixed	12	40	28	233
Mixed/multiple ethnic group: White and Asian	22	63	41	186
Mixed/multiple ethnic group: White and Black African	12	13	1	8
Mixed/multiple ethnic group: White and Black Caribbean	62	106	44	71
Other ethnic group: Any other ethnic group	9	32	23	256

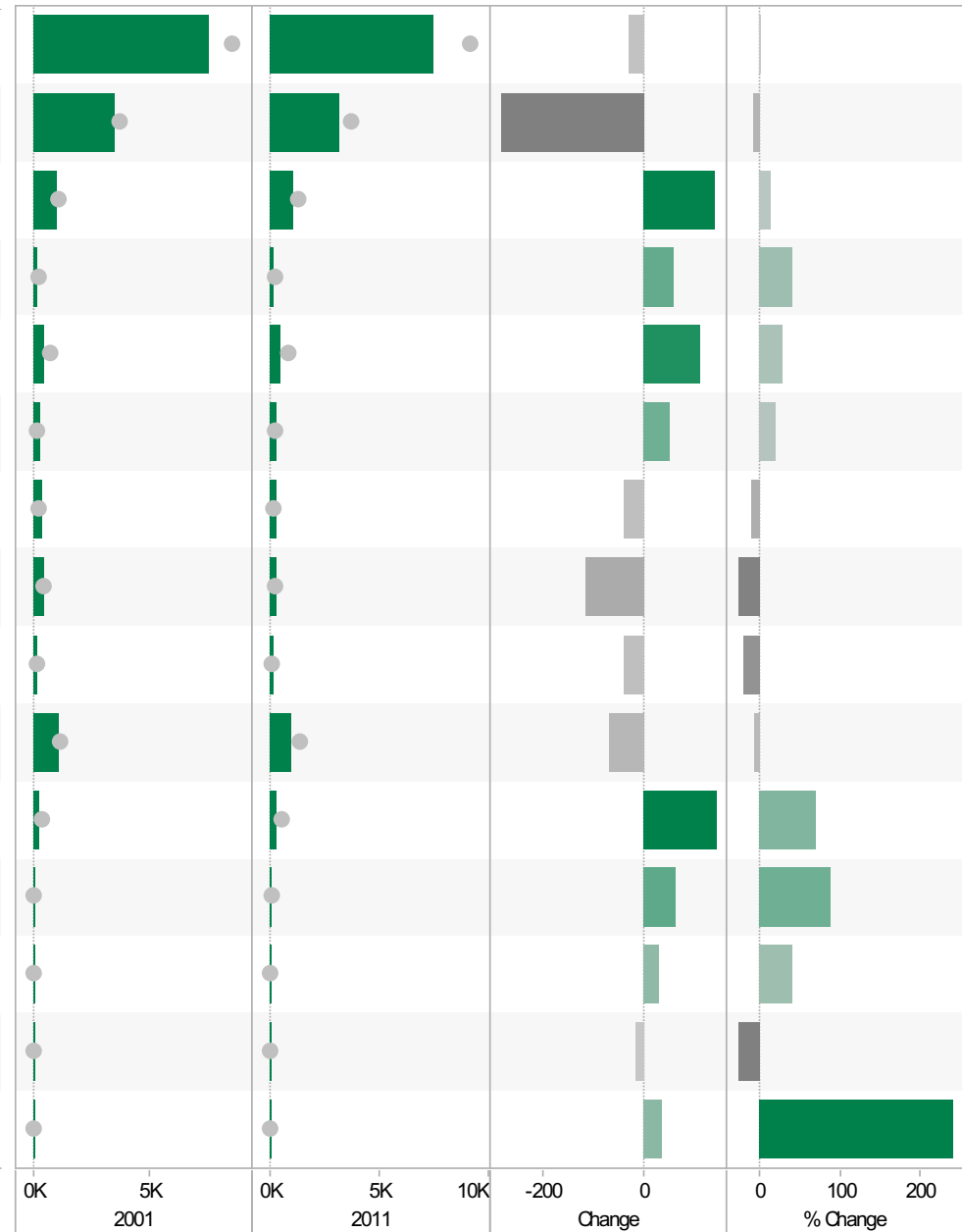


Source: Office for National Statistics (ONS), 2013.
 Produced by the Research and Insight Team, Leicestershire County Council.

Wigston South* ED
KS601EW : Economic Activity, 2001-11

Coloured bar - data for Electoral Division
Grey circle - average for all Leicestershire Electoral Divisions

	2001	2011	Change	% Change
All usual residents aged 16 and over	7,555	7,527	-28	0
Economically active: Employee: Full-time	3,484	3,202	-282	-8
Economically active: Employee: Part-time	966	1,108	142	15
Economically active: Full-time student	147	207	60	41
Economically active: Self-employed	398	511	113	28
Economically active: Unemployed	275	328	53	19
Economically inactive: Long-term sick or disabled	375	336	-39	-10
Economically inactive: Looking after home or family	414	301	-113	-27
Economically inactive: Other	184	146	-38	-21
Economically inactive: Retired	1,103	1,035	-68	-6
Economically inactive: Student (including full-time students)	209	353	144	69
Long-term unemployed	74	139	65	88
Unemployed: Age 16 to 24	79	111	32	41
Unemployed: Age 50 and over	53	38	-15	-28
Unemployed: Never worked	15	51	36	240

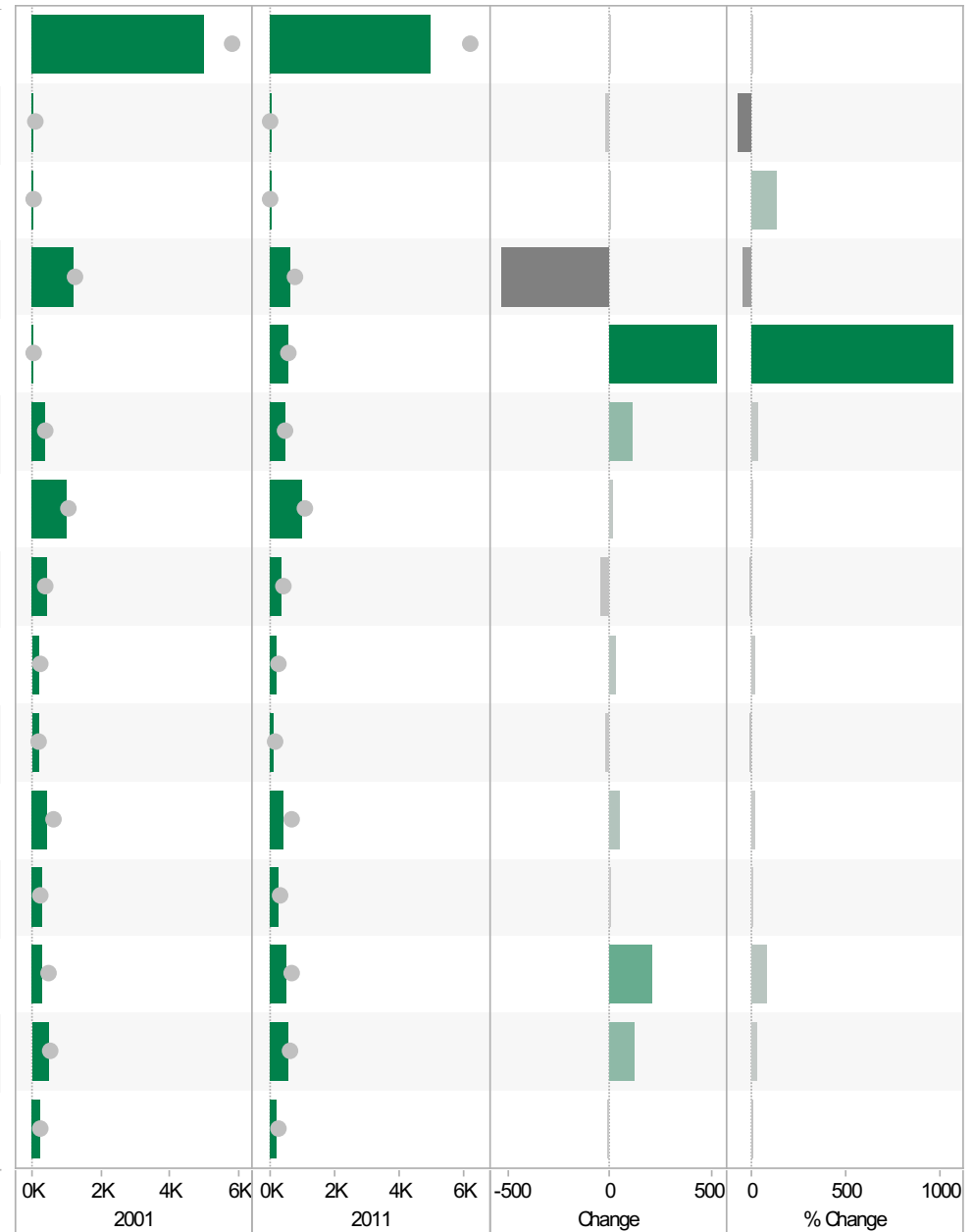


Source: Office for National Statistics (ONS), 2013.
 Produced by the Research and Insight Team, Leicestershire County Council.

Wigston South* ED
KS605EW : Industry, 2001-11

Coloured bar - data for Electoral Division
Grey circle - average for all Leicestershire Electoral Divisions

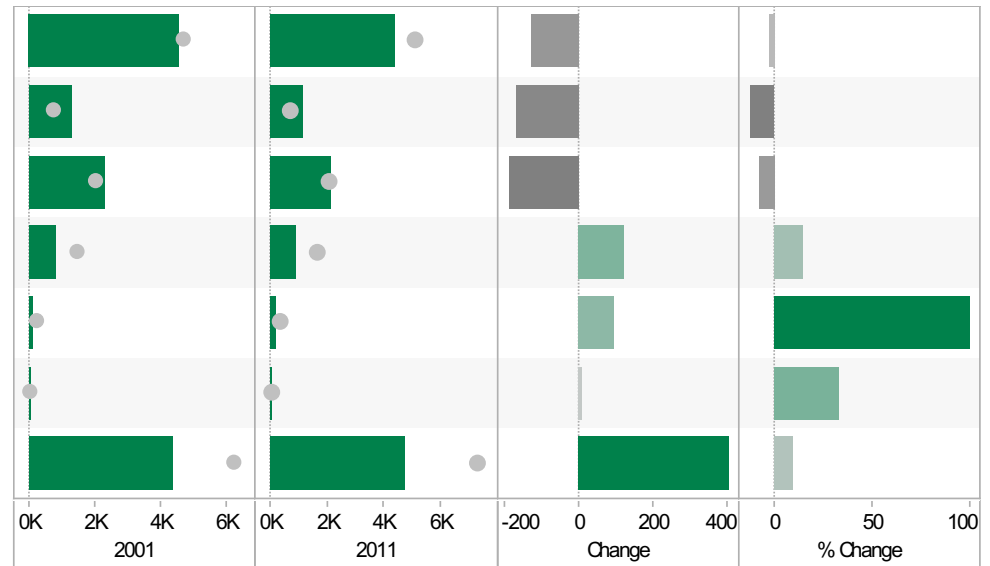
	2001	2011	Change	% Change
All usual residents aged 16 and over in employment	4,973	4,973	0	0
A Agriculture, forestry and fishing	27	6	-21	-78
B Mining and quarrying	4	9	5	125
C Manufacturing	1,180	646	-534	-45
D, F Electricity, gas, steam, air conditioning supply, water and sewerage	49	571	522	1,065
F Construction	380	492	112	29
G Wholesale and retail trade; repair of motor vehicles and motor cycles	982	1,000	18	2
H, J Transport, storage, information and communication	396	353	-43	-11
I Accommodation and food service activities	177	210	33	19
K Financial and insurance activities	147	132	-15	-10
L, M, N Real estate activities Professional, scientific and technical activities Administrative and support service activities	398	445	47	12
O Public administration and defence; compulsory social security	249	249	0	0
P Education	291	501	210	72
Q Human health and social work activities	480	602	122	25
R, S, T, U Other	213	201	-12	-6



Source: Office for National Statistics (ONS), 2013.
 Produced by the Research and Insight Team, Leicestershire County Council.

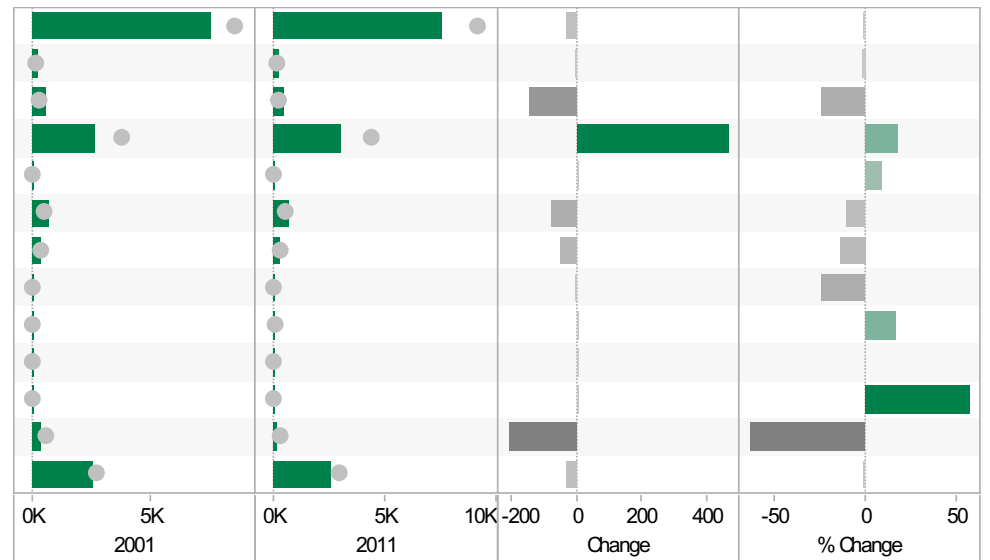
Wigston South* ED
KS404EW : Car and Van Availability, 2001-11

	2001	2011	Change	% Change
All Households	4,538	4,412	-126	-3
No Cars or Vans in Household	1,293	1,127	-166	-13
1 Car or Van in Household	2,304	2,116	-188	-8
2 Cars or Vans in Household	811	932	121	15
3 Cars or Vans in Household	96	192	96	100
4 or More Cars or Vans in Household	34	45	11	32
All Cars or Vans in the Area	4,353	4,754	401	9



Wigston South* ED
QS701EW : Method of Travel to Work, 2001-11

	2001	2011	Change	% Change
All Usual Residents Aged 16 to 74	7,554	7,527	-27	0
Bicycle	223	220	-3	-1
Bus, Minibus or Coach	601	460	-141	-23
Driving a Car or Van	2,595	3,060	465	18
Motorcycle, Scooter or Moped	52	57	5	10
On Foot	736	661	-75	-10
Passenger in a Car or Van	372	321	-51	-14
Taxi	21	16	-5	-24
Train	29	34	5	17
Underground, Metro, Light Rail, Tram	0	1	1	
Other Method of Travel to Work	14	22	8	57
Work Mainly at or From Home	329	121	-208	-63
Not in Employment	2,582	2,554	-28	-1



Source: Office for National Statistics (ONS), 2013.
 Produced by the Research and Insight Team, Leicestershire County Council.

If you require information contained in this leaflet in another version e.g. large print, Braille, tape or alternative language please telephone: 0116 305 6803, Fax: 0116 305 7271 or Minicom: 0116 305 6160.

ਜੇ ਆਪ ਆ ਮਾਭਿਨੀ ਆਪਨੀ ਆਧਾਮਾਂ ਸਮਝਵਾਮਾਂ ਥੋੜੀ ਮਦਦ ਈਝਤਾਂ ਡੋ ਤੋ 0116 305 6803 ਨੰਬਰ ਪਰ ਝੋਨ ਕਰਥੋ ਅਨੇ ਅਮੇ ਆਪਨੇ ਮਦਦ ਕਰਵਾ ਅਵਥਾ ਕਰੀਯੁੰ.

ਜੇਕਰ ਤੁਹਾਨੂੰ ਇਸ ਜਾਣਕਾਰੀ ਨੂੰ ਸਮਝਣ ਵਿਚ ਕੁਝ ਮਦਦ ਚਾਹੀਦੀ ਹੈ ਤਾਂ ਕਿਰਪਾ ਕਰਕੇ 0116 305 6803 ਨੰਬਰ ਤੇ ਫੋਨ ਕਰੋ ਅਤੇ ਅਸੀਂ ਤੁਹਾਡੀ ਮਦਦ ਲਈ ਕਿਸੇ ਦਾ ਪ੍ਰਬੰਧ ਕਰ ਦਵਾਂਗੇ।

এই তথ্য নিজের ভাষায় বুঝার জন্য আপনার যদি কোন সাহায্যের প্রয়োজন হয়, তবে 0116 305 6803 এই নম্বরে ফোন করলে আমরা উপযুক্ত ব্যক্তির ব্যবস্থা করবো।

اگر آپ کو یہ معلومات سمجھنے میں کچھ مدد درکار ہے تو براہ مہربانی اس نمبر پر کال کریں اور ہم آپ کی مدد کے لئے کسی کا انتظام کر دیں گے۔ 0116 305 6803

假如閣下需要幫助，用你的語言去明白這些資訊，請致電 0116 305 6803，我們會安排有關人員為你提供幫助。

Jeżeli potrzebujesz pomocy w zrozumieniu tej informacji w Twoim języku, zadzwoń pod numer 0116 305 6803, a my Ci dopomożemy.

Research & Insight Team
Strategy, Partnerships & Communities
Chief Executive's Department
Leicestershire County Council
County Hall
Glenfield
Leicester
LE3 8RA

ri@leics.gov.uk
www.lsr-online.org