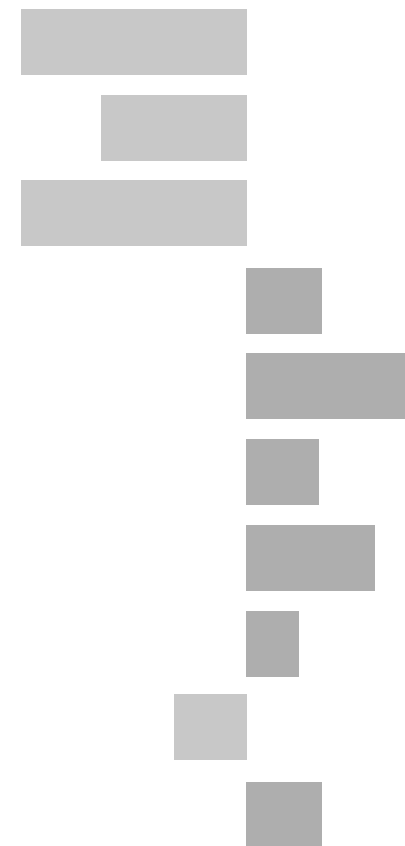


Groby and Ratby Electoral Division

2011 Census Key Statistics

Alex Lea
May 2013

Research and Insight Team
Leicestershire County Council



Alex Lea

Research & Insight Manager

Research & Insight Team
Strategy, Partnerships & Communities
Leicestershire County Council
County Hall
Glenfield
Leicester LE3 8RB

Tel 0116 305 6803

Email alex.lea@leics.gov.uk

Produced by the Research and Insight Team at Leicestershire County Council.

Whilst every effort has been made to ensure the accuracy of the information contained within this report, Leicestershire County Council cannot be held responsible for any errors or omission relating to the data contained within the report.

CONTENTS

Introduction

About this Report	4
2011 Census	4
Data	5
Census Geography	5
Indicator Changes 2001-11	6

Population

KS101EW - Usual Resident Population	7
KS102EW - Age Structure	7

Households

KS105EW - Household Composition	8
KS402EW - Tenure	9

Health and Caring

KS301EW - Health and Provision of Unpaid Care	9
---	---

Ethnicity

KS201EW - Ethnic Group	10
------------------------	----

Economy

KS601EW - Economic Activity	11
KS605EW - Industry	12

Transport

KS404EW - Car and Van Availability	13
QS701EW- Method of Travel to Work	13

INTRODUCTION

ABOUT THIS REPORT

This report provides a broad overview of the 2011 Census Key Statistics data, released by the Office for National Statistics on 30th January 2013, as part of the Second Release. This report summarises a selection of key headline datasets of this release for Leicestershire Electoral Divisions (EDs).

The Research and Insight Team at Leicestershire County Council has used data from the Second release to create an interactive Tableau dashboard containing 32 datasets covering the following geographies:

- England
- East Midlands
- East Midlands counties . Including Leicestershire
- Leicester City and Rutland Unitary Authorities
- Leicestershire districts

In addition, a headline report covers the results for Leicestershire and the seven districts that make up the county. The dashboard and report are available at the following links:

Census 2011 Key Statistics Dashboard

<http://public.tableausoftware.com/views/LAKeyStatsDashboard/Dashboard>

May 2013

Census 2011 Key Statistics Headline Report

http://www.lsr-online.org/reports/census_2011_key_statistics_headline_report/download/1/Census%202011%20Second%20Release%20FINAL.pdf

2011 CENSUS

Census statistics help paint a picture of the nation and how we live. They provide a detailed snapshot of the population and its characteristics, and underpin funding allocation to provide public services.¹ Data from the 2011 Census is made available at a variety of different levels of geography and in various releases.

The Key Statistics data covers a broad range of socio-economic topics, including data on ethnicity, health and employment. Each Key Statistic dataset is referred to by its unique three-digit code with the 'KS' prefix to denote a Key statistic (e.g. KS101). These are used throughout the report.

A full list of the 35 Key Statistics data tables are available here:

<http://www.ons.gov.uk/ons/publications/re-reference-tables.html?edition=tcm%3A77-286262>

¹ Office for National Statistics (ONS), 2013.

Further results from the census will be released throughout 2013, for more information, please visit:

<http://www.lsr-online.org/census-2011.html>

More information on the 2011 Census can be found here:

<http://www.ons.gov.uk/ons/guide-method/census/2011/index.html>

DATA

Data has been compiled for Leicestershire Electoral Divisions, covering the key datasets from the 2011 Census Key statistics.

Figures for 2011 and 2001 are included, along with the overall and percentage change between the two censuses. Data for each indicator is presented in a table and chart.

Population data is displayed in a table, a population pyramid and a chart showing percentage change between 2001 and 2011. All other data is displayed in tables, and charts. Charts for change between 2001 and 2011 are coloured according to the degree of change between the two censuses; grey corresponds to smallest change and green the largest change. A marker indicates the average figure for all Leicestershire Electoral Divisions.

GEOGRAPHY

Maps for all County Council Electoral Divisions can be found here:

http://www.leics.gov.uk/index/your_council/local_democracy/conductofcouncillorsandemployees/electoraldivisionmapsindex/electoraldivisionmaps.htm

As Census data is not made available for Electoral Divisions, smaller areas, called Lower Super Output Areas (LSOAs) have been used as building blocks for the figures included in this report. LSOAs are small parcels of geography, containing a minimum of 1,000 people, a maximum of 3,000 and an average of 1,500. LSOAs were initially developed for the 2001 Census and are used to release a range of neighbourhood-level datasets from various sources. There are 396 LSOAs in Leicestershire.

In some instances, LSOAs do not fit neatly within Electoral Divisions and in these cases, population weighted centroids - representing the 'centre of gravity' for population within an area - have been used in order to assign each LSOA to an Electoral Division. Electoral Divisions that fall within this category are indicated with a (*).

More information on Lower Super Output Areas can be found here:

<http://www.ons.gov.uk/ons/guide-method/geography/beginner-s-guide/census/super-output-areas--soas-/index.html>

INDICATOR CHANGES 2001-11

The following questions were asked in slightly different ways in 2011 compared to 2001. As such, care should be taken when making comparison between years.

KS201EW : Ethnic Group

Asian/Asian British: Chinese
Mixed/multiple ethnic group: Other Mixed
Mixed/multiple ethnic group: White and Asian
Mixed/multiple ethnic group: White and Black African
Mixed/multiple ethnic group: White and Black Caribbean
Other ethnic group: Any other ethnic group
White: English/Welsh/Scottish/Northern Irish/British
White: Other White

KS301EW : Health and Provision of Unpaid Care

Day-to-day activities limited
Day-to-day activities limited: Age 16 to 64
Day-to-day activities not limited
Fair health
Very/ bad Health
Very/ good Health

KS601EW : Economic Activity

All usual residents aged 16 and over
Economically active: Employee: Full-time
Economically active: Employee: Part-time
Economically active: Full-time student

Economically active: Self-employed
Economically active: Unemployed
Economically inactive: Long-term sick or disabled
Economically inactive: Looking after home or family
Economically inactive: Other
Economically inactive: Retired
Economically inactive: Student (including full-time)
Long-term unemployed
Unemployed: Age 50 and over
Unemployed: Never worked

KS605EW : Industry

All usual residents aged 16 and over in employment
A Agriculture, forestry and fishing
B Mining and quarrying
C Manufacturing
D, F Electricity, gas, steam, air conditioning supply etc
F Construction
G Wholesale and retail trade; repair of motor vehicles etc
H, J Transport, storage, information and communication
I Accommodation and food service activities
K Financial and insurance activities
L,M,N Real estate activities Professional, scientific etc
O Public administration and defence etc
P Education
Q Human health and social work activities
R, S, T, U Other

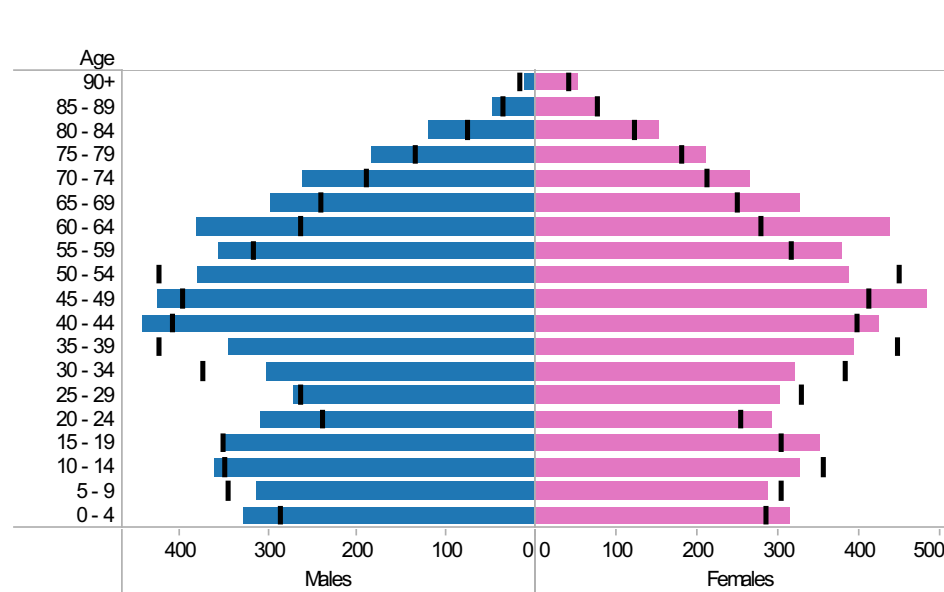
Groby and Ratby ED: KS101EW : Usual Resident Population, KS102EW : Age Structure

■ Males
 ■ Females
 ■ Persons

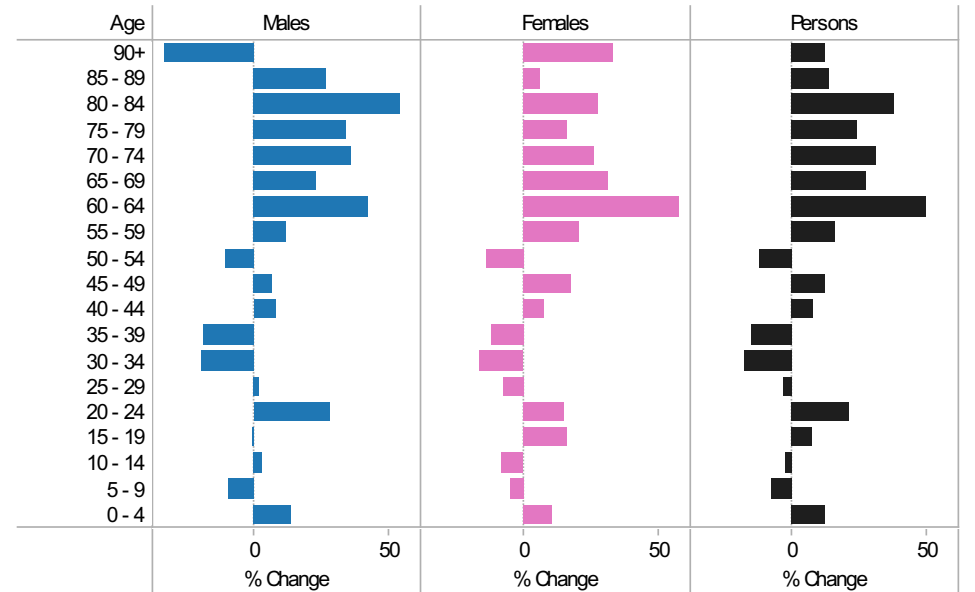
2001-11 Population by sex and quinary age band

Age	Males			Females			Persons		
	2001	2011	Change 2001-11	2001	2011	Change 2001-11	2001	2011	Change 2001-11
90+	18	12	-6	39	52	13	57	64	7
85 - 89	37	47	10	75	80	5	112	127	15
80 - 84	77	119	42	120	153	33	197	272	75
75 - 79	136	183	47	180	210	30	316	393	77
70 - 74	192	262	70	210	265	55	402	527	125
65 - 69	242	298	56	248	326	78	490	624	134
60 - 64	266	380	114	278	438	160	544	818	274
55 - 59	319	356	37	314	379	65	633	735	102
50 - 54	424	378	-46	447	387	-60	871	765	-106
45 - 49	398	424	26	411	484	73	809	908	99
40 - 44	409	442	33	395	425	30	804	867	63
35 - 39	425	345	-80	445	394	-51	870	739	-131
30 - 34	375	301	-74	381	320	-61	756	621	-135
25 - 29	266	271	5	326	303	-23	592	574	-18
20 - 24	240	308	68	253	291	38	493	599	106
15 - 19	353	351	-2	301	351	50	654	702	48
10 - 14	350	360	10	355	326	-29	705	686	-19
5 - 9	347	313	-34	302	288	-14	649	601	-48
0 - 4	288	328	40	284	314	30	572	642	70
All Ages	5,162	5,478	316	5,364	5,786	422	10,526	11,264	738

2011 (coloured bars) and 2001 (black marks) population by sex and quinary age



2001-11 Percentage change by sex and quinary age band



Groby and Ratby ED KS105EW : Household Composition, 2001-11

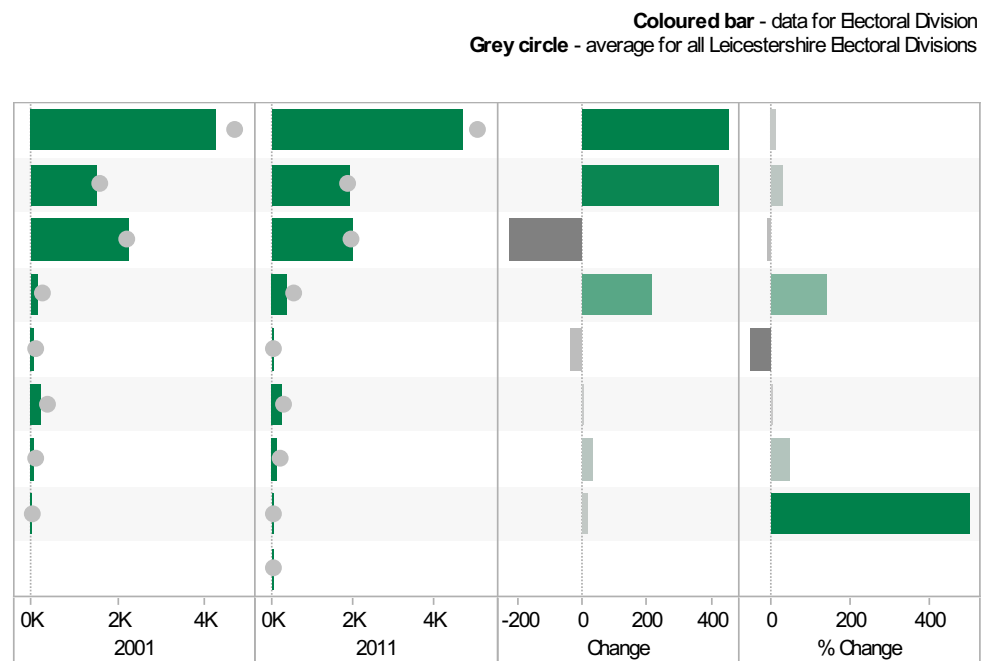
Coloured bar - data for Electoral Division
Grey circle - average for all Leicestershire Electoral Divisions

	2001	2011	Change	% Change
All Households	4,270	4,715	445	10
One Family Only; All Aged 65 and Over	462	513	51	11
One Family Only; Cohabiting Couple; All Children Non-Dependent	22	20	-2	-9
One Family Only; Cohabiting Couple; Dependent Children	156	192	36	23
One Family Only; Cohabiting Couple; No Children	239	250	11	5
One Family Only; Lone Parent; All Children Non-Dependent	75	147	72	96
One Family Only; Lone Parent; Dependent Children	162	279	117	72
One Family Only; Married or Same-Sex Civil Partnership Couple; All Children Non-Dependent	342	346	4	1
One Family Only; Married or Same-Sex Civil Partnership Couple; Dependent Children	969	859	-110	-11
One Family Only; Married or Same-Sex Civil Partnership Couple; No Children	695	741	46	7
One Person Household; Aged 65 and Over	513	594	81	16
One Person Household; Other	469	604	135	29
Other Household Types; All Aged 65 and Over	19	5	-14	-74
Other Household Types; All Full-Time Students	0	0	0	
Other Household Types; Other	86	92	6	7
Other Household Types; With Dependent Children	61	73	12	20



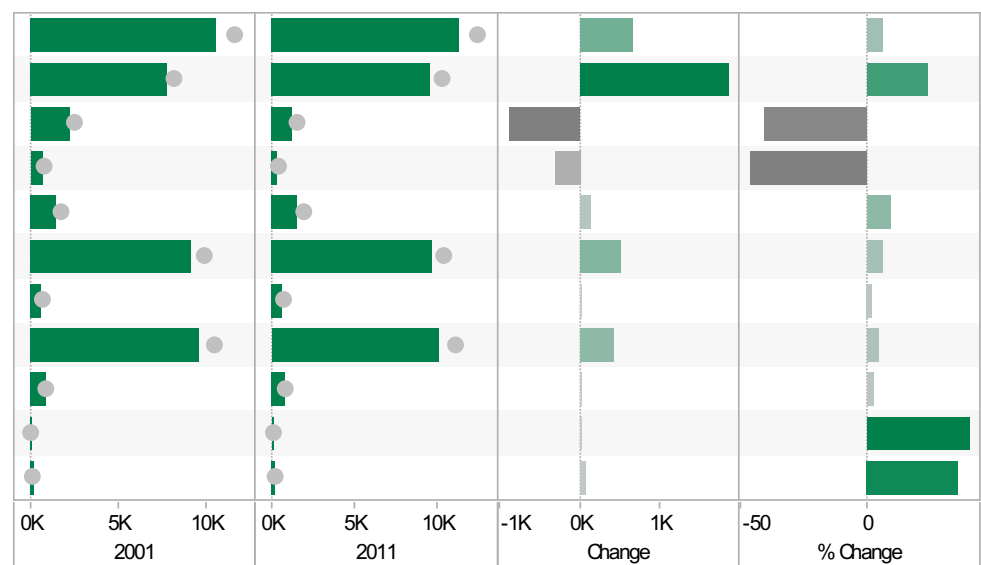
Groby and Ratby ED
KS402EW: Tenure, 2001-11

	2001	2011	Change	% Change
All Households	4,264	4,715	451	11
Owned; Owned Outright	1,492	1,913	421	28
Owned; Owned with a Mortgage or Loan	2,246	2,018	-228	-10
Private Rented; Private Landlord or Letting Agency	154	369	215	140
Private Rented; Other	71	32	-39	-55
Social Rented; Rented from Council (Local Authority)	225	229	4	2
Social Rented; Other	73	105	32	44
Shared Ownership (Part Owned and Part Rented)	3	18	15	500
Living Rent Free		31		



Groby and Ratby ED
KS301EW: Health and Provision of Unpaid Care, 2001-11

	2001	2011	Change	% Change
All usual residents	10,609	11,264	655	6
Very/ good Health	7,747	9,600	1,853	24
Fair health	2,191	1,303	-888	-41
Very/ bad Health	671	361	-310	-46
Day-to-day activities limited	1,465	1,602	137	9
Day-to-day activities not limited	9,144	9,662	518	6
Day-to-day activities limited a lot: Age 16 to 64	621	634	13	2
Provides no unpaid care	9,611	10,038	427	4
Provides 1 to 19 hours unpaid care a week	835	855	20	2
Provides 20 to 49 hours unpaid care a week	87	122	35	40
Provides 50 or more hours unpaid care a week	183	249	66	36

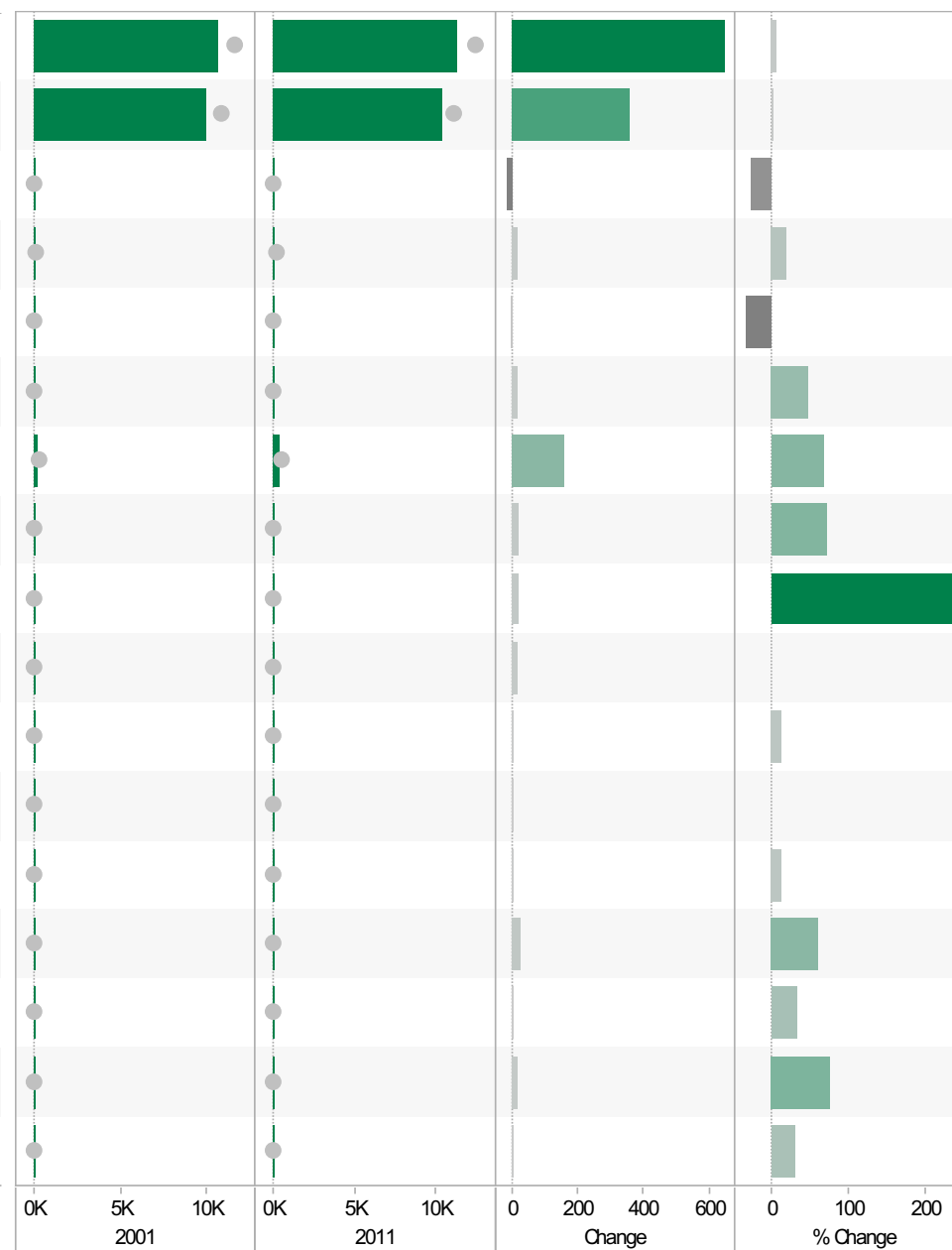


Source: Office for National Statistics (ONS), 2013.
Produced by the Research and Insight Team, Leicestershire County Council.

Groby and Ratby ED
KS201EW : Ethnic Group, 2001-11

Coloured bar - data for Electoral Division
Grey circle - average for all Leicestershire Electoral Divisions

	2001	2011	Change	% Change
All usual residents	10,620	11,264	644	6
White: English/Welsh/Scottish/Northern Irish/British	10,028	10,384	356	4
White: Irish	64	48	-16	-25
White: Other White	97	116	19	20
Asian/Asian British: Bangladeshi	3	2	-1	-33
Asian/Asian British: Chinese	33	49	16	48
Asian/Asian British: Indian	238	399	161	68
Asian/Asian British: Other Asian	28	48	20	71
Asian/Asian British: Pakistani	8	28	20	250
Black/African/Caribbean/Black British: African	0	16	16	
Black/African/Caribbean/Black British: Caribbean	22	25	3	14
Black/African/Caribbean/Black British: Other Black	0	1	1	
Mixed/multiple ethnic group: Other Mixed	22	25	3	14
Mixed/multiple ethnic group: White and Asian	40	65	25	63
Mixed/multiple ethnic group: White and Black African	3	4	1	33
Mixed/multiple ethnic group: White and Black Caribbean	21	37	16	76
Other ethnic group: Any other ethnic group	13	17	4	31

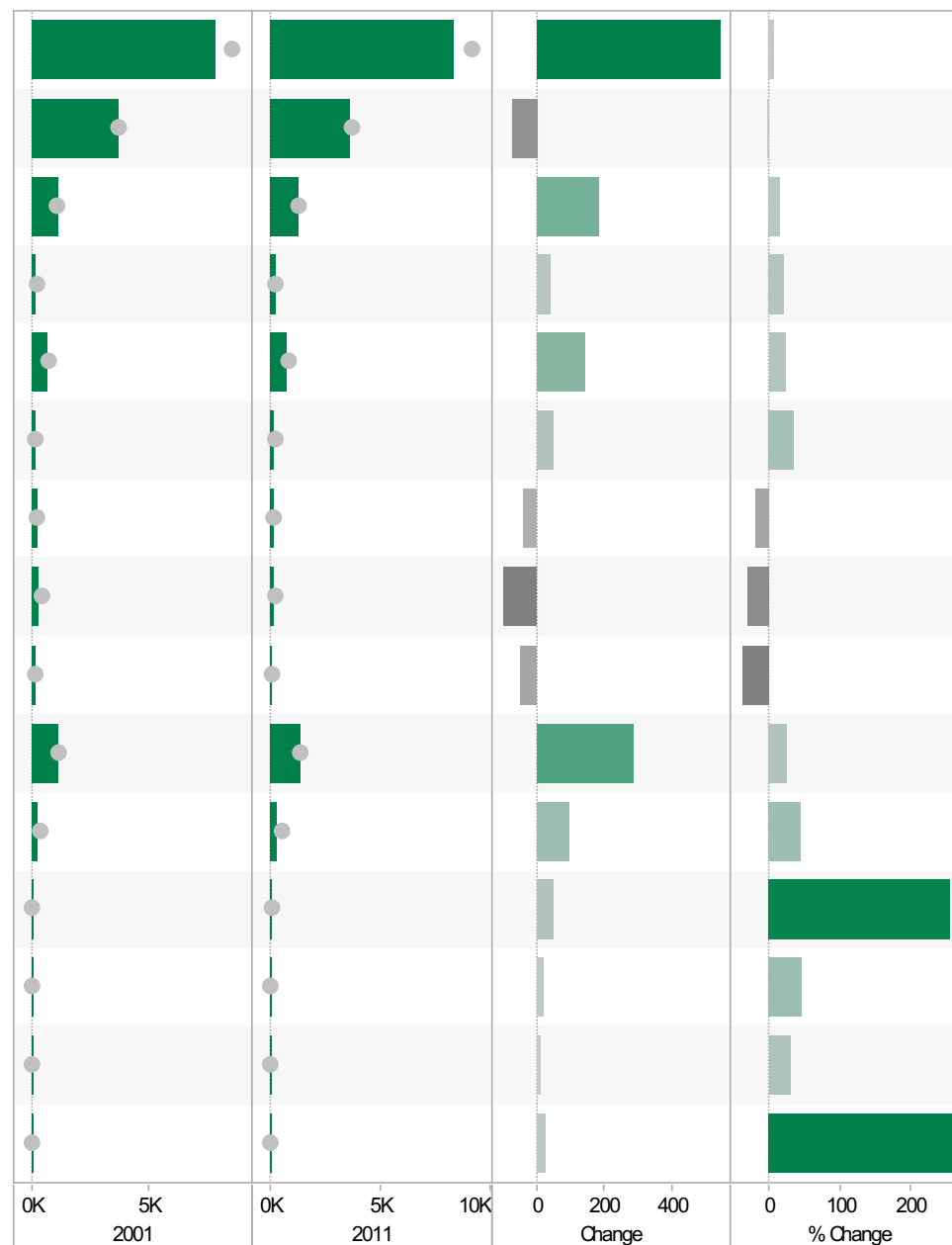


Source: Office for National Statistics (ONS), 2013.
 Produced by the Research and Insight Team, Leicestershire County Council.

Groby and Ratby ED
KS601EW : Economic Activity, 2001-11

Coloured bar - data for Electoral Division
 Grey circle - average for all Leicestershire Electoral Divisions

	2001	2011	Change	% Change
All usual residents aged 16 and over	7,788	8,331	543	7
Economically active: Employee: Full-time	3,704	3,629	-75	-2
Economically active: Employee: Part-time	1,143	1,329	186	16
Economically active: Full-time student	180	219	39	22
Economically active: Self-employed	649	791	142	22
Economically active: Unemployed	148	200	52	35
Economically inactive: Long-term sick or disabled	193	156	-37	-19
Economically inactive: Looking after home or family	314	213	-101	-32
Economically inactive: Other	122	74	-48	-39
Economically inactive: Retired	1,119	1,408	289	26
Economically inactive: Student (including full-time students)	216	312	96	44
Long-term unemployed	20	71	51	255
Unemployed: Age 16 to 24	42	62	20	48
Unemployed: Age 50 and over	34	44	10	29
Unemployed: Never worked	9	33	24	267

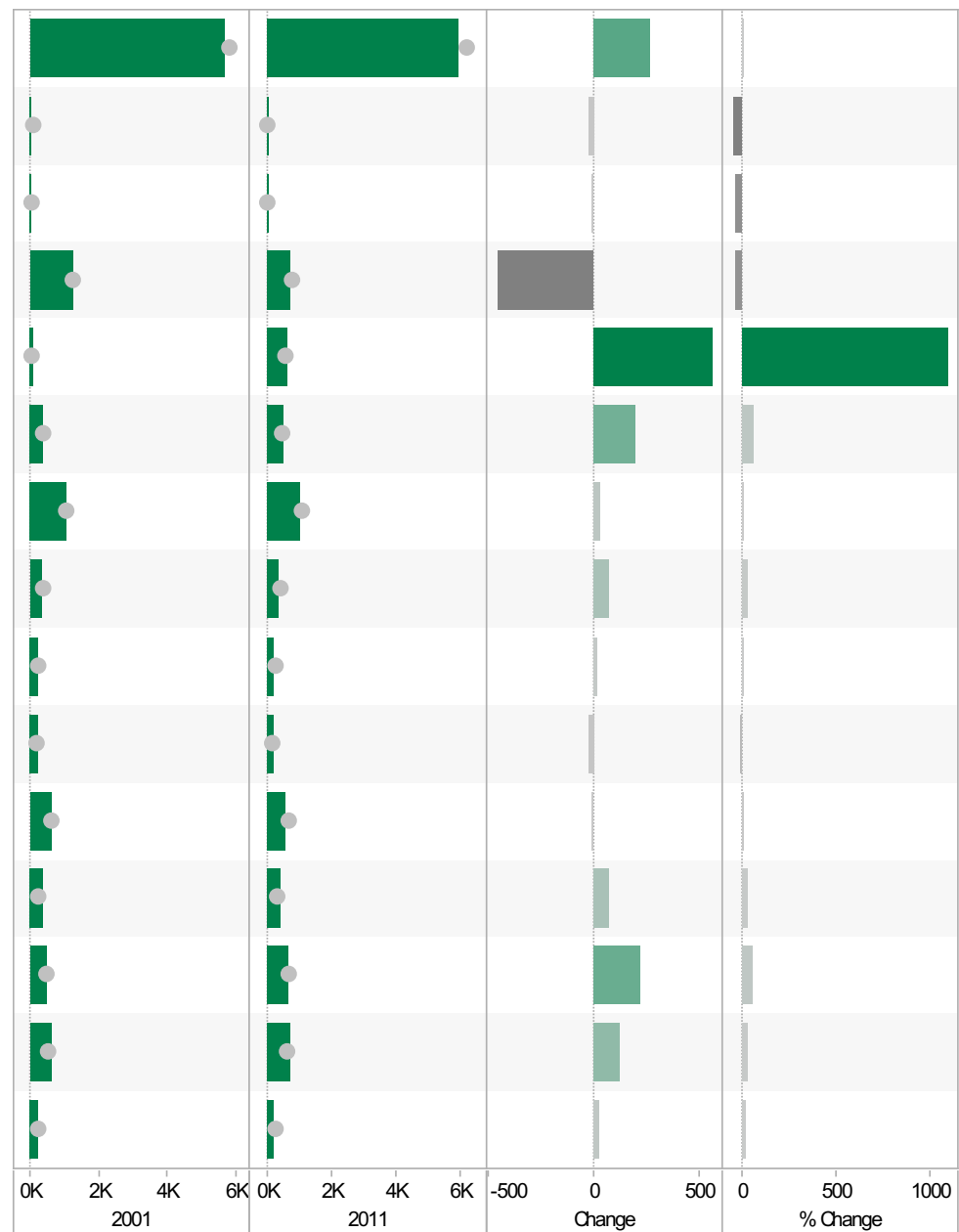


Source: Office for National Statistics (ONS), 2013.
 Produced by the Research and Insight Team, Leicestershire County Council.

Groby and Ratby ED
KS605EW : Industry, 2001-11

Coloured bar - data for Electoral Division
Grey circle - average for all Leicestershire Electoral Divisions

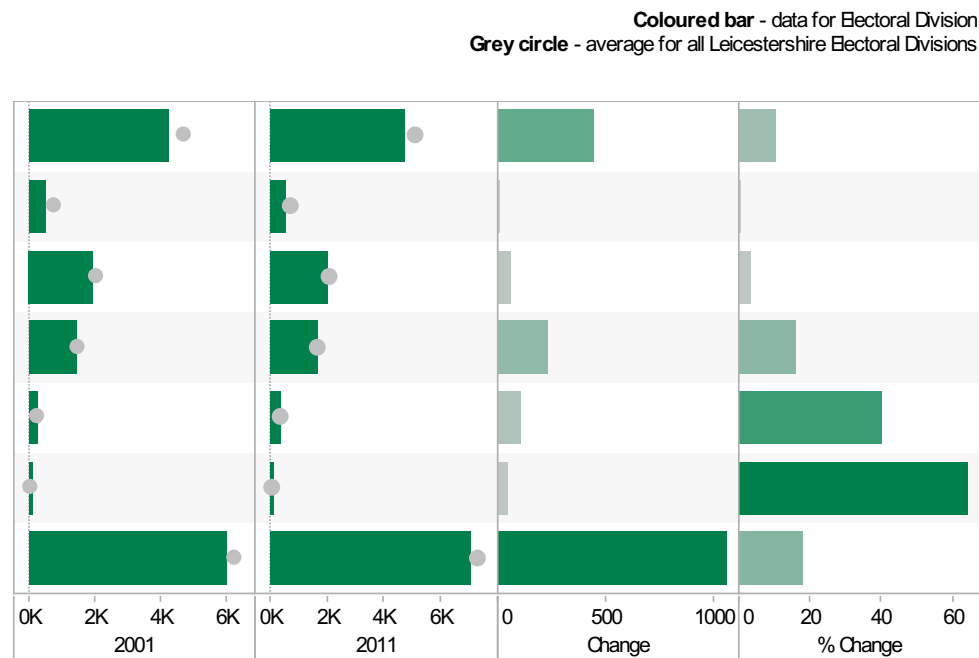
	2001	2011	Change	% Change
All usual residents aged 16 and over in employment	5,662	5,928	266	5
A Agriculture, forestry and fishing	43	21	-22	-51
B Mining and quarrying	23	14	-9	-39
C Manufacturing	1,207	748	-459	-38
D, F Electricity, gas, steam, air conditioning supply, water and sewerage	51	608	557	1,092
F Construction	352	549	197	56
G Wholesale and retail trade; repair of motor vehicles and motor cycles	1,018	1,048	30	3
H, J Transport, storage, information and communication	313	384	71	23
I Accommodation and food service activities	209	222	13	6
K Financial and insurance activities	240	215	-25	-10
L, M, N Real estate activities Professional, scientific and technical activities Administrative and support service activities	598	587	-11	-2
O Public administration and defence; compulsory social security	346	417	71	21
P Education	445	664	219	49
Q Human health and social work activities	609	733	124	20
R, S, T, U Other	208	231	23	11



Source: Office for National Statistics (ONS), 2013.
 Produced by the Research and Insight Team, Leicestershire County Council.

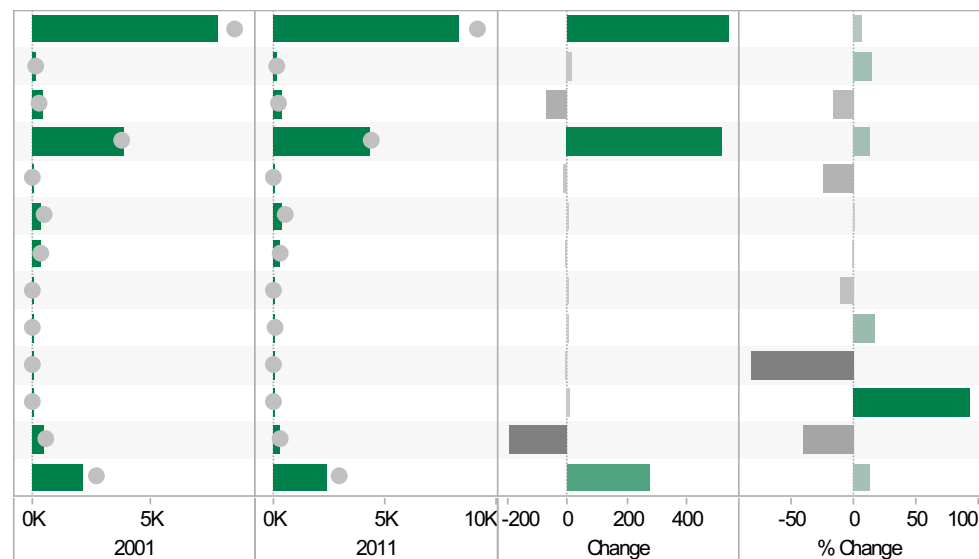
Groby and Ratby ED KS404EW : Car and Van Availability, 2001-11

	2001	2011	Change	% Change
All Households	4,266	4,715	449	11
No Cars or Vans in Household	525	526	1	0
1 Car or Van in Household	1,959	2,021	62	3
2 Cars or Vans in Household	1,444	1,675	231	16
3 Cars or Vans in Household	262	368	106	40
4 or More Cars or Vans in Household	76	125	49	64
All Cars or Vans in the Area	5,962	7,027	1,065	18



Groby and Ratby ED QS701EW : Method of Travel to Work, 2001-11

	2001	2011	Change	% Change
All Usual Residents Aged 16 to 74	7,791	8,331	540	7
Bicycle	110	126	16	15
Bus, Minibus or Coach	423	353	-70	-17
Driving a Car or Van	3,819	4,341	522	14
Motorcycle, Scooter or Moped	52	39	-13	-25
On Foot	383	384	1	0
Passenger in a Car or Van	342	336	-6	-2
Taxi	9	8	-1	-11
Train	23	27	4	17
Underground, Metro, Light Rail, Tram	6	1	-5	-83
Other Method of Travel to Work	13	25	12	92
Work Mainly at or From Home	486	288	-198	-41
Not in Employment	2,125	2,403	278	13



If you require information contained in this leaflet in another version e.g. large print, Braille, tape or alternative language please telephone: 0116 305 6803, Fax: 0116 305 7271 or Minicom: 0116 305 6160.

ਜੇ ਆਪ ਆ ਮਾਭਿਨੀ ਆਪਨੀ ਆਧਾਮਾਂ ਸਮਝਵਾਮਾਂ ਥੋੜੀ ਮਦਦ ਈਝਤਾਂ ਡੋ ਤੋ 0116 305 6803 ਨੰਬਰ ਪਰ ਫ਼ੋਨ ਕਰਥੋ ਅਨੇ ਅਮੇ ਆਪਨੇ ਮਦਦ ਕਰਵਾ ਆਵਥਾ ਕਰੀਥੁੰ.

ਜੇਕਰ ਤੁਹਾਨੂੰ ਇਸ ਜਾਣਕਾਰੀ ਨੂੰ ਸਮਝਣ ਵਿਚ ਕੁਝ ਮਦਦ ਚਾਹੀਦੀ ਹੈ ਤਾਂ ਕਿਰਪਾ ਕਰਕੇ 0116 305 6803 ਨੰਬਰ ਤੇ ਫ਼ੋਨ ਕਰੋ ਅਤੇ ਅਸੀਂ ਤੁਹਾਡੀ ਮਦਦ ਲਈ ਕਿਸੇ ਦਾ ਪ੍ਰਬੰਧ ਕਰ ਦਵਾਂਗੇ।

এই তথ্য নিজের ভাষায় বুঝার জন্য আপনার যদি কোন সাহায্যের প্রয়োজন হয়, তবে 0116 305 6803 এই নম্বরে ফোন করলে আমরা উপযুক্ত ব্যক্তির ব্যবস্থা করবো।

اگر آپ کو یہ معلومات سمجھنے میں کچھ مدد درکار ہے تو براہ مہربانی اس نمبر پر کال کریں اور ہم آپ کی مدد کے لئے کسی کا انتظام کر دیں گے۔ 0116 305 6803

假如閣下需要幫助，用你的語言去明白這些資訊，請致電 0116 305 6803，我們會安排有關人員為你提供幫助。

Jeżeli potrzebujesz pomocy w zrozumieniu tej informacji w Twoim języku, zadzwoń pod numer 0116 305 6803, a my Ci dopomożemy.

Research & Insight Team
Strategy, Partnerships & Communities
Chief Executive's Department
Leicestershire County Council
County Hall
Glenfield
Leicester
LE3 8RA

ri@leics.gov.uk
www.lsr-online.org