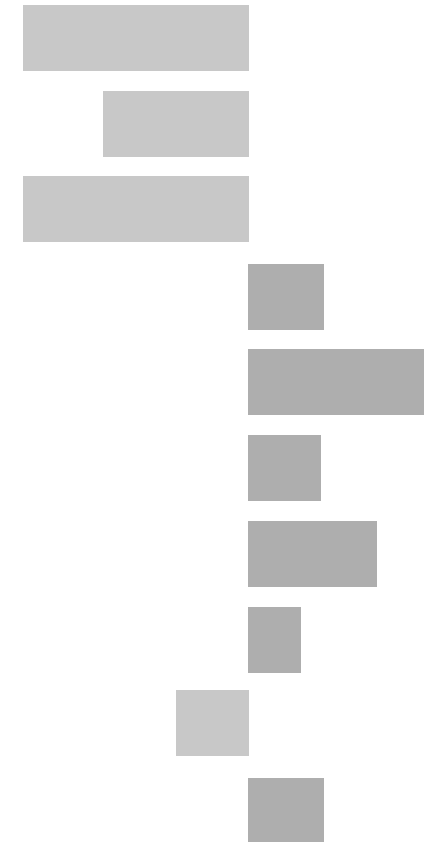


# Market Harborough East Electoral Division

## 2011 Census Key Statistics

Alex Lea  
May 2013

Research and Insight Team  
Leicestershire County Council



**Alex Lea**

Research & Insight Manager

Research & Insight Team  
Strategy, Partnerships & Communities  
Leicestershire County Council  
County Hall  
Glenfield  
Leicester LE3 8RB

Tel 0116 305 6803

Email [alex.lea@leics.gov.uk](mailto:alex.lea@leics.gov.uk)

Produced by the Research and Insight Team at Leicestershire County Council.

Whilst every effort has been made to ensure the accuracy of the information contained within this report, Leicestershire County Council cannot be held responsible for any errors or omission relating to the data contained within the report.

## CONTENTS

### Introduction

About this Report	4
2011 Census	4
Data	5
Census Geography	5
Indicator Changes 2001-11	6

### Population

KS101EW - Usual Resident Population	7
KS102EW - Age Structure	7

### Households

KS105EW - Household Composition	8
KS402EW - Tenure	9

### Health and Caring

KS301EW - Health and Provision of Unpaid Care	9
---	---

### Ethnicity

KS201EW - Ethnic Group	10
------------------------	----

### Economy

KS601EW - Economic Activity	11
KS605EW - Industry	12

### Transport

KS404EW - Car and Van Availability	13
QS701EW- Method of Travel to Work	13

## INTRODUCTION

### ABOUT THIS REPORT

This report provides a broad overview of the 2011 Census Key Statistics data, released by the Office for National Statistics on 30th January 2013, as part of the Second Release. This report summarises a selection of key headline datasets of this release for Leicestershire Electoral Divisions (EDs).

The Research and Insight Team at Leicestershire County Council has used data from the Second release to create an interactive Tableau dashboard containing 32 datasets covering the following geographies:

- England
- East Midlands
- East Midlands counties . Including Leicestershire
- Leicester City and Rutland Unitary Authorities
- Leicestershire districts

In addition, a headline report covers the results for Leicestershire and the seven districts that make up the county. The dashboard and report are available at the following links:

#### Census 2011 Key Statistics Dashboard

<http://public.tableausoftware.com/views/LAKeyStatsDashboard/Dashboard>

May 2013

#### Census 2011 Key Statistics Headline Report

[http://www.lsr-online.org/reports/census\\_2011\\_key\\_statistics\\_headline\\_report/download/1/Census%202011%20Second%20Release%20FINAL.pdf](http://www.lsr-online.org/reports/census_2011_key_statistics_headline_report/download/1/Census%202011%20Second%20Release%20FINAL.pdf)

### 2011 CENSUS

Census statistics help paint a picture of the nation and how we live. They provide a detailed snapshot of the population and its characteristics, and underpin funding allocation to provide public services.<sup>1</sup> Data from the 2011 Census is made available at a variety of different levels of geography and in various releases.

The Key Statistics data covers a broad range of socio-economic topics, including data on ethnicity, health and employment. Each Key Statistic dataset is referred to by its unique three-digit code with the 'KS' prefix to denote a Key statistic (e.g. KS101). These are used throughout the report.

A full list of the 35 Key Statistics data tables are available here:

<http://www.ons.gov.uk/ons/publications/re-reference-tables.html?edition=tcm%3A77-286262>

<sup>1</sup> Office for National Statistics (ONS), 2013.

Further results from the census will be released throughout 2013, for more information, please visit:

<http://www.lsr-online.org/census-2011.html>

More information on the 2011 Census can be found here:

<http://www.ons.gov.uk/ons/guide-method/census/2011/index.html>

## DATA

Data has been compiled for Leicestershire Electoral Divisions, covering the key datasets from the 2011 Census Key statistics.

Figures for 2011 and 2001 are included, along with the overall and percentage change between the two censuses. Data for each indicator is presented in a table and chart.

Population data is displayed in a table, a population pyramid and a chart showing percentage change between 2001 and 2011. All other data is displayed in tables, and charts. Charts for change between 2001 and 2011 are coloured according to the degree of change between the two censuses; grey corresponds to smallest change and green the largest change. A marker indicates the average figure for all Leicestershire Electoral Divisions.

## GEOGRAPHY

Maps for all County Council Electoral Divisions can be found here:

[http://www.leics.gov.uk/index/your\\_council/local\\_democracy/conductofcouncillorsandemployees/electoraldivisionmapsindex/electoraldivisionmaps.htm](http://www.leics.gov.uk/index/your_council/local_democracy/conductofcouncillorsandemployees/electoraldivisionmapsindex/electoraldivisionmaps.htm)

As Census data is not made available for Electoral Divisions, smaller areas, called Lower Super Output Areas (LSOAs) have been used as building blocks for the figures included in this report. LSOAs are small parcels of geography, containing a minimum of 1,000 people, a maximum of 3,000 and an average of 1,500. LSOAs were initially developed for the 2001 Census and are used to release a range of neighbourhood-level datasets from various sources. There are 396 LSOAs in Leicestershire.

In some instances, LSOAs do not fit neatly within Electoral Divisions and in these cases, population weighted centroids - representing the 'centre of gravity' for population within an area - have been used in order to assign each LSOA to an Electoral Division. Electoral Divisions that fall within this category are indicated with a (\*).

More information on Lower Super Output Areas can be found here:

<http://www.ons.gov.uk/ons/guide-method/geography/beginner-s-guide/census/super-output-areas--soas-/index.html>

## INDICATOR CHANGES 2001-11

The following questions were asked in slightly different ways in 2011 compared to 2001. As such, care should be taken when making comparison between years.

### **KS201EW : Ethnic Group**

Asian/Asian British: Chinese  
Mixed/multiple ethnic group: Other Mixed  
Mixed/multiple ethnic group: White and Asian  
Mixed/multiple ethnic group: White and Black African  
Mixed/multiple ethnic group: White and Black Caribbean  
Other ethnic group: Any other ethnic group  
White: English/Welsh/Scottish/Northern Irish/British  
White: Other White

### **KS301EW : Health and Provision of Unpaid Care**

Day-to-day activities limited  
Day-to-day activities limited: Age 16 to 64  
Day-to-day activities not limited  
Fair health  
Very/ bad Health  
Very/ good Health

### **KS601EW : Economic Activity**

All usual residents aged 16 and over  
Economically active: Employee: Full-time  
Economically active: Employee: Part-time  
Economically active: Full-time student

Economically active: Self-employed  
Economically active: Unemployed  
Economically inactive: Long-term sick or disabled  
Economically inactive: Looking after home or family  
Economically inactive: Other  
Economically inactive: Retired  
Economically inactive: Student (including full-time)  
Long-term unemployed  
Unemployed: Age 50 and over  
Unemployed: Never worked

### **KS605EW : Industry**

All usual residents aged 16 and over in employment  
A Agriculture, forestry and fishing  
B Mining and quarrying  
C Manufacturing  
D, F Electricity, gas, steam, air conditioning supply etc  
F Construction  
G Wholesale and retail trade; repair of motor vehicles etc  
H, J Transport, storage, information and communication  
I Accommodation and food service activities  
K Financial and insurance activities  
L,M,N Real estate activities Professional, scientific etc  
O Public administration and defence etc  
P Education  
Q Human health and social work activities  
R, S, T, U Other

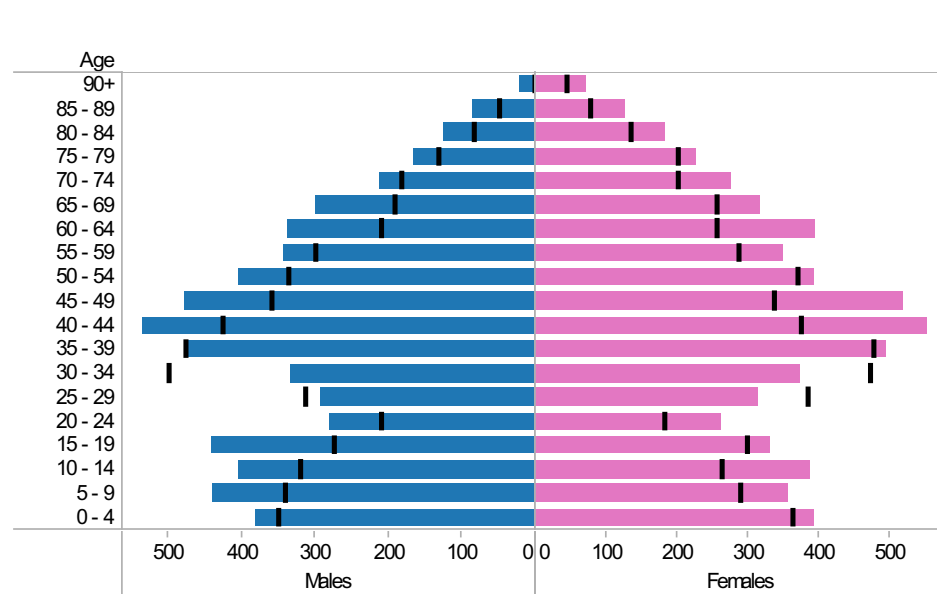
## Market Harbourough East ED: KS101EW : Usual Resident Population, KS102EW : Age Structure

■ Males
 ■ Females
 ■ Persons

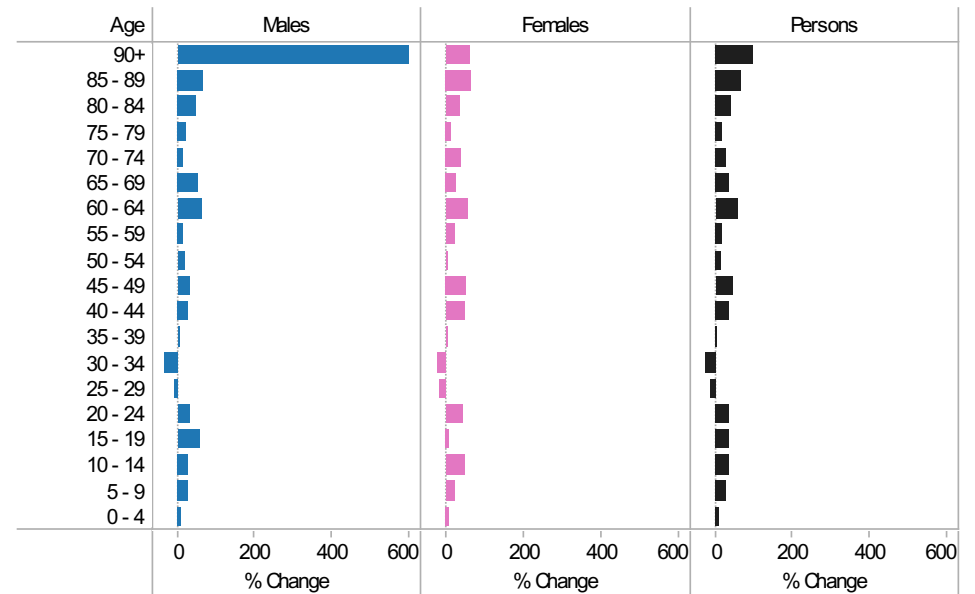
### 2001-11 Population by sex and quinary age band

Age	Males			Females			Persons		
	2001	2011	Change 2001-11	2001	2011	Change 2001-11	2001	2011	Change 2001-11
90+	3	21	18	44	71	27	47	92	45
85 - 89	51	85	34	77	127	50	128	212	84
80 - 84	84	124	40	134	183	49	218	307	89
75 - 79	133	165	32	201	226	25	334	391	57
70 - 74	184	210	26	201	276	75	385	486	101
65 - 69	192	298	106	254	317	63	446	615	169
60 - 64	210	337	127	254	394	140	464	731	267
55 - 59	301	342	41	285	350	65	586	692	106
50 - 54	338	404	66	370	392	22	708	796	88
45 - 49	359	477	118	336	518	182	695	995	300
40 - 44	427	535	108	374	553	179	801	1,088	287
35 - 39	477	472	-5	477	496	19	954	968	14
30 - 34	500	333	-167	471	374	-97	971	707	-264
25 - 29	313	291	-22	384	314	-70	697	605	-92
20 - 24	211	279	68	182	262	80	393	541	148
15 - 19	276	440	164	298	330	32	574	770	196
10 - 14	321	403	82	262	387	125	583	790	207
5 - 9	342	437	95	288	356	68	630	793	163
0 - 4	351	380	29	361	392	31	712	772	60
All Ages	5,073	6,033	960	5,253	6,318	1,065	10,326	12,351	2,025

### 2011 (coloured bars) and 2001 (black marks) population by sex and quinary age

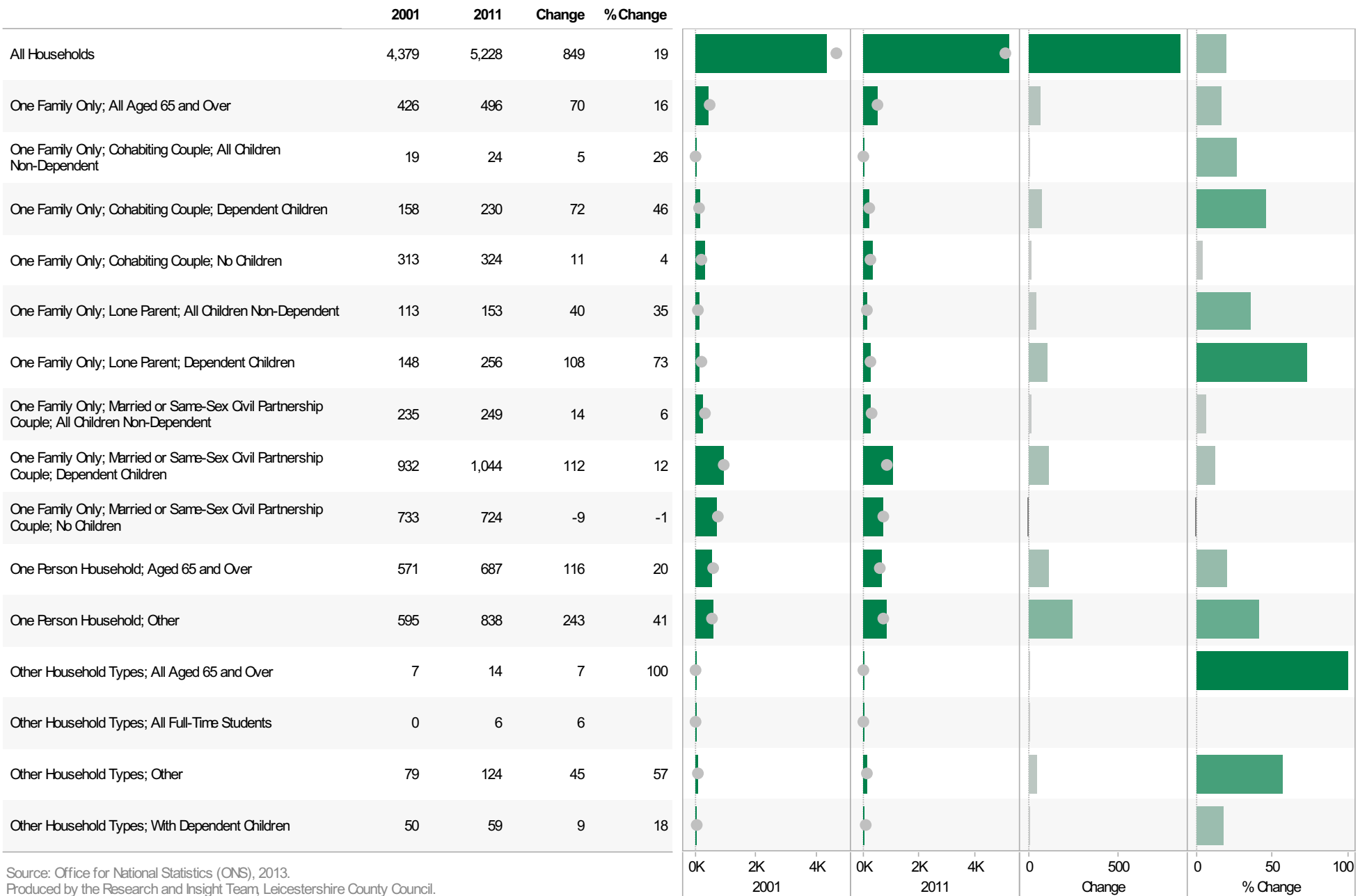


### 2001-11 Percentage change by sex and quinary age band



**Market Harborough East ED**  
**KS105EW : Household Composition, 2001-11**

**Coloured bar** - data for Electoral Division  
**Grey circle** - average for all Leicestershire Electoral Divisions

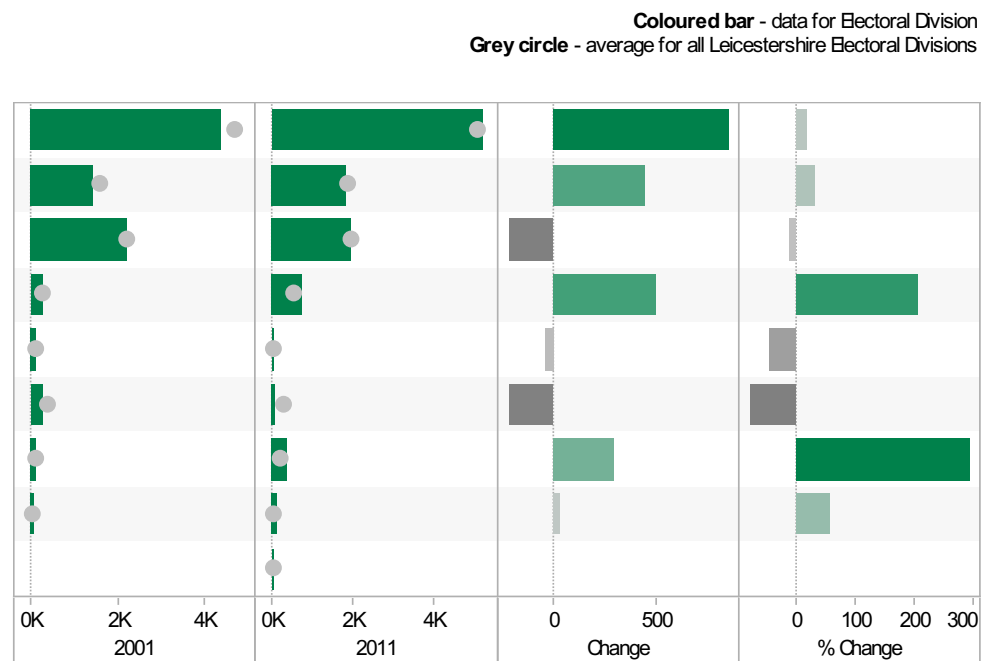


Source: Office for National Statistics (ONS), 2013.  
 Produced by the Research and Insight Team, Leicestershire County Council.



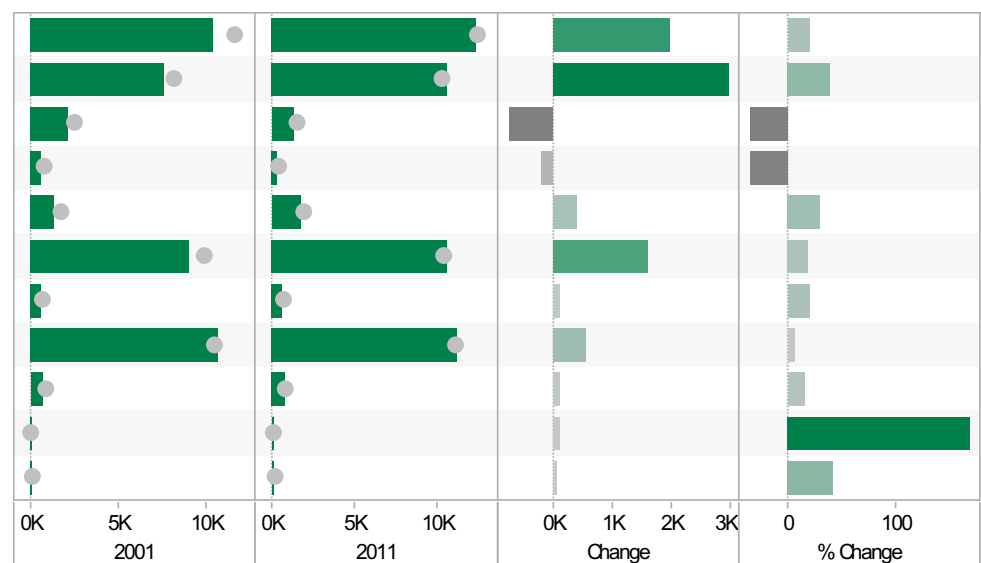
## Market Harborough East ED KS402EW: Tenure, 2001-11

	2001	2011	Change	% Change
All Households	4,382	5,228	846	19
Owned; Owned Outright	1,419	1,857	438	31
Owned; Owned with a Mortgage or Loan	2,189	1,973	-216	-10
Private Rented; Private Landlord or Letting Agency	241	736	495	205
Private Rented; Other	98	55	-43	-44
Social Rented; Rented from Council (Local Authority)	271	61	-210	-77
Social Rented; Other	100	393	293	293
Shared Ownership (Part Owned and Part Rented)	64	101	37	58
Living Rent Free		52		



## Market Harborough East ED KS301EW: Health and Provision of Unpaid Care, 2001-11

	2001	2011	Change	% Change
All usual residents	10,381	12,351	1,970	19
Very/ good Health	7,632	10,577	2,945	39
Fair health	2,141	1,375	-766	-36
Very/ bad Health	608	399	-209	-34
Day-to-day activities limited	1,351	1,736	385	28
Day-to-day activities not limited	9,030	10,615	1,585	18
Day-to-day activities limited a lot: Age 16 to 64	577	689	112	19
Provides no unpaid care	10,645	11,165	520	5
Provides 1 to 19 hours unpaid care a week	725	838	113	16
Provides 20 to 49 hours unpaid care a week	55	147	92	167
Provides 50 or more hours unpaid care a week	142	201	59	42



## Market Harborough East ED KS201EW : Ethnic Group, 2001-11

Coloured bar - data for Electoral Division  
Grey circle - average for all Leicestershire Electoral Divisions

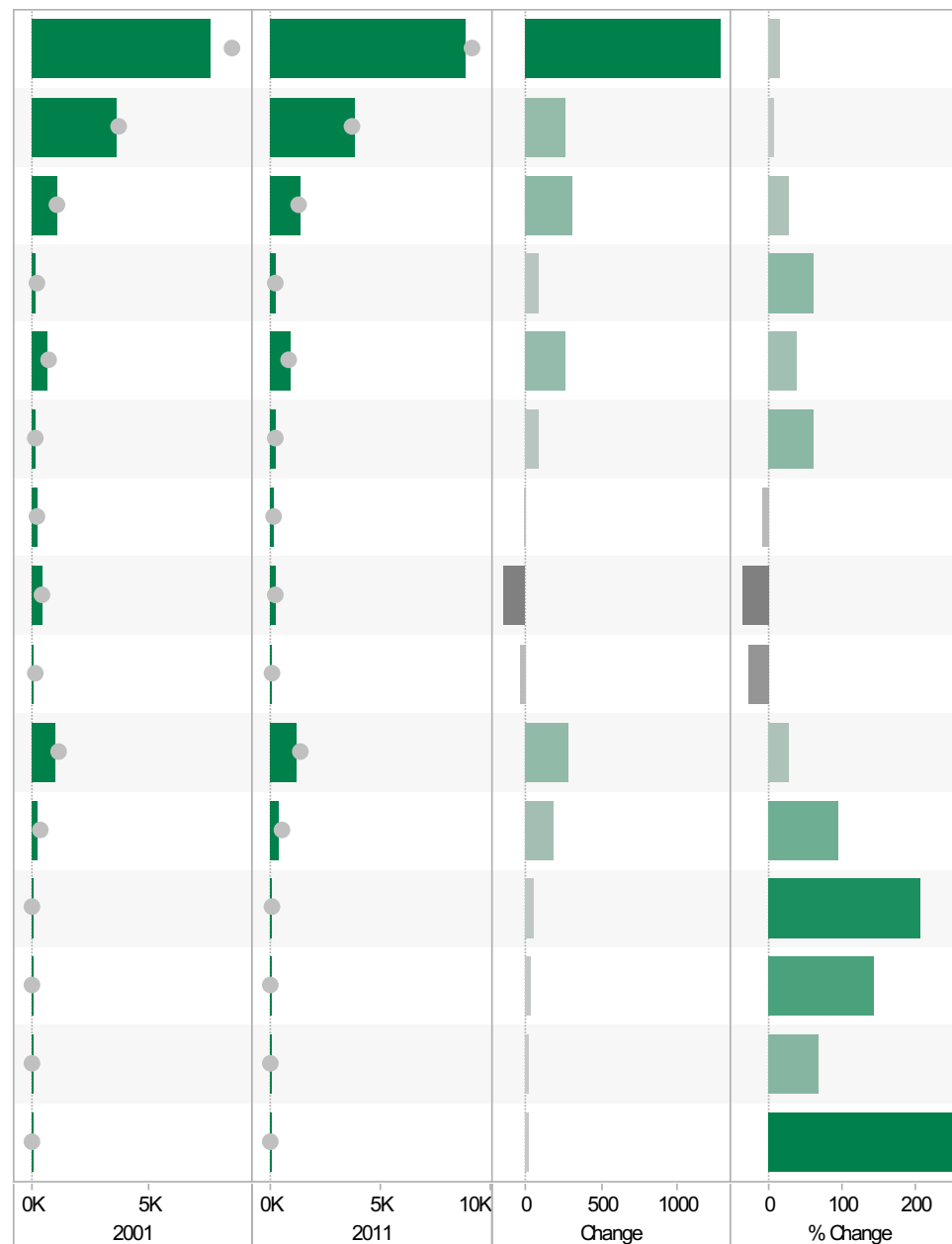
	2001	2011	Change	% Change
All usual residents	10,375	12,351	1,976	19
White: English/Welsh/Scottish/Northern Irish/British	9,884	11,429	1,545	16
White: Irish	81	87	6	7
White: Other White	176	371	195	111
Asian/Asian British: Bangladeshi	7	9	2	29
Asian/Asian British: Chinese	52	67	15	29
Asian/Asian British: Indian	52	107	55	106
Asian/Asian British: Other Asian	6	53	47	783
Asian/Asian British: Pakistani	4	6	2	50
Black/African/Caribbean/Black British: African	6	46	40	667
Black/African/Caribbean/Black British: Caribbean	7	6	-1	-14
Black/African/Caribbean/Black British: Other Black	8	1	-7	-88
Mixed/multiple ethnic group: Other Mixed	12	35	23	192
Mixed/multiple ethnic group: White and Asian	22	59	37	168
Mixed/multiple ethnic group: White and Black African	6	16	10	167
Mixed/multiple ethnic group: White and Black Caribbean	32	40	8	25
Other ethnic group: Any other ethnic group	20	19	-1	-5



**Market Harborough East ED**  
**KS601EW : Economic Activity, 2001-11**

**Coloured bar** - data for Electoral Division  
**Grey circle** - average for all Leicestershire Electoral Divisions

	2001	2011	Change	% Change
All usual residents aged 16 and over	7,568	8,850	1,282	17
Economically active: Employee: Full-time	3,647	3,907	260	7
Economically active: Employee: Part-time	1,063	1,371	308	29
Economically active: Full-time student	141	228	87	62
Economically active: Self-employed	672	934	262	39
Economically active: Unemployed	142	231	89	63
Economically inactive: Long-term sick or disabled	202	186	-16	-8
Economically inactive: Looking after home or family	413	263	-150	-36
Economically inactive: Other	113	84	-29	-26
Economically inactive: Retired	976	1,257	281	29
Economically inactive: Student (including full-time students)	199	389	190	95
Long-term unemployed	27	83	56	207
Unemployed: Age 16 to 24	26	63	37	142
Unemployed: Age 50 and over	26	44	18	69
Unemployed: Never worked	7	25	18	257

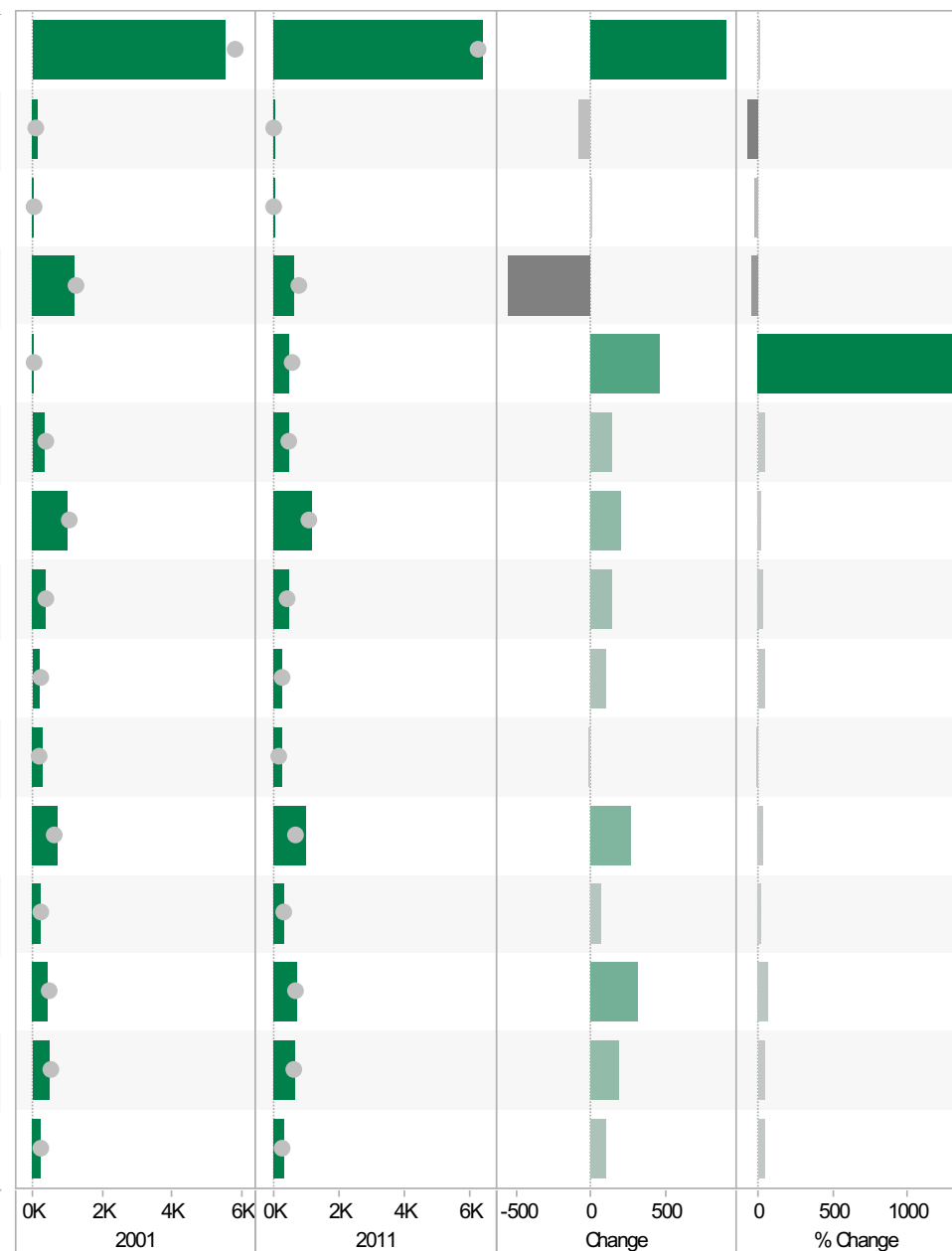


Source: Office for National Statistics (ONS), 2013.  
 Produced by the Research and Insight Team, Leicestershire County Council.

**Market Harborough East ED**  
**KS605EW : Industry, 2001-11**

**Coloured bar** - data for Electoral Division  
**Grey circle** - average for all Leicestershire Electoral Divisions

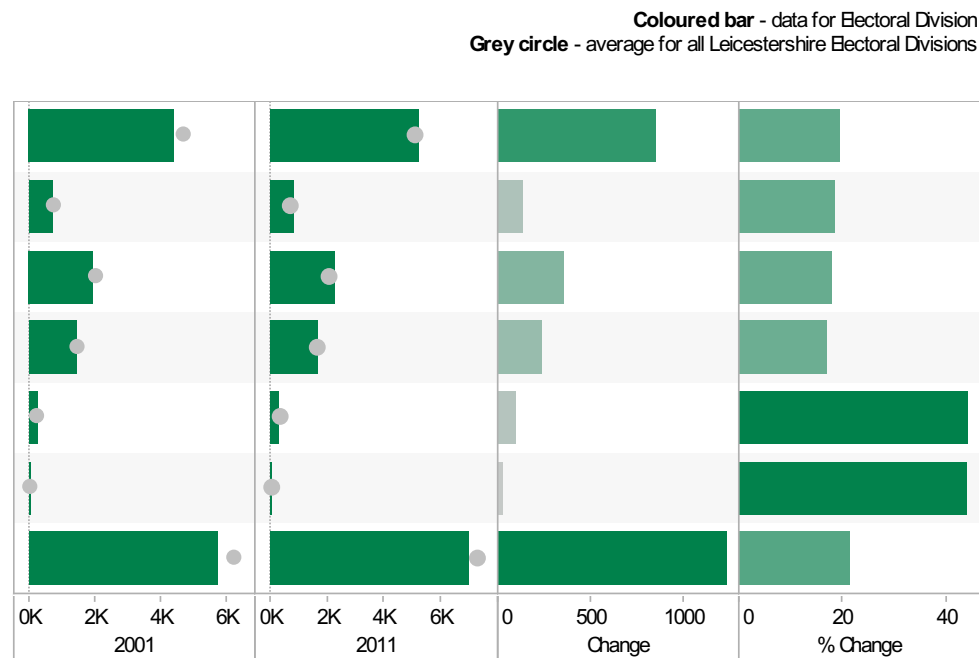
	2001	2011	Change	% Change
All usual residents aged 16 and over in employment	5,517	6,419	902	16
A Agriculture, forestry and fishing	107	31	-76	-71
B Mining and quarrying	6	5	-1	-17
C Manufacturing	1,189	630	-559	-47
D, F Electricity, gas, steam, air conditioning supply, water and sewerage	33	489	456	1,382
F Construction	318	457	139	44
G Wholesale and retail trade; repair of motor vehicles and motor cycles	985	1,186	201	20
H, J Transport, storage, information and communication	352	495	143	41
I Accommodation and food service activities	190	288	98	52
K Financial and insurance activities	275	260	-15	-5
L, M, N Real estate activities Professional, scientific and technical activities Administrative and support service activities	711	975	264	37
O Public administration and defence; compulsory social security	240	309	69	29
P Education	435	748	313	72
Q Human health and social work activities	464	655	191	41
R, S, T, U Other	212	312	100	47



Source: Office for National Statistics (ONS), 2013.  
Produced by the Research and Insight Team, Leicestershire County Council.

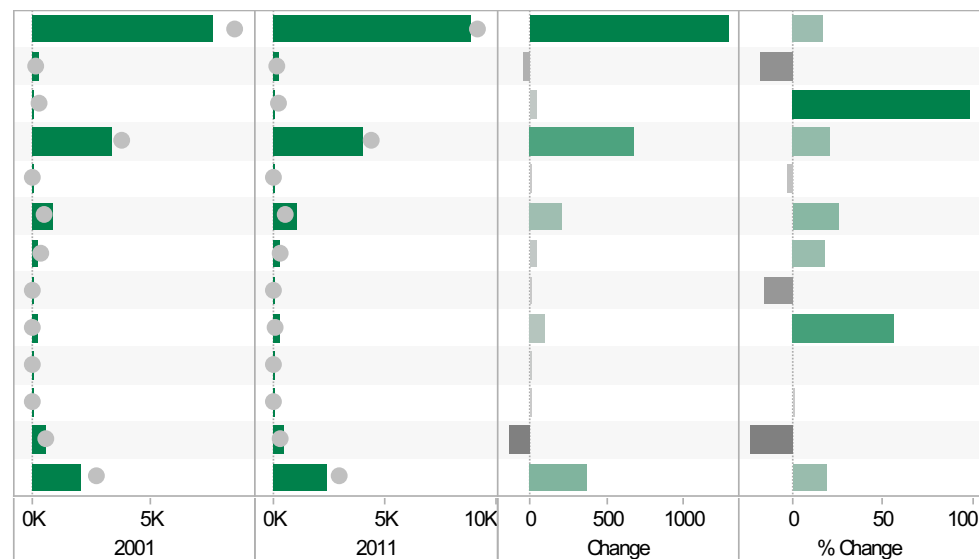
## Market Harborough East ED KS404EW : Car and Van Availability, 2001-11

	2001	2011	Change	% Change
All Households	4,378	5,228	850	19
No Cars or Vans in Household	729	863	134	18
1 Car or Van in Household	1,940	2,290	350	18
2 Cars or Vans in Household	1,424	1,664	240	17
3 Cars or Vans in Household	228	329	101	44
4 or More Cars or Vans in Household	57	82	25	44
All Cars or Vans in the Area	5,726	6,962	1,236	22



## Market Harborough East ED QS701EW : Method of Travel to Work, 2001-11

	2001	2011	Change	% Change
All Usual Residents Aged 16 to 74	7,565	8,850	1,285	17
Bicycle	252	207	-45	-18
Bus, Minibus or Coach	45	89	44	98
Driving a Car or Van	3,320	4,002	682	21
Motorcycle, Scooter or Moped	39	38	-1	-3
On Foot	838	1,050	212	25
Passenger in a Car or Van	225	266	41	18
Taxi	19	16	-3	-16
Train	182	284	102	56
Underground, Metro, Light Rail, Tram	0	10	10	
Other Method of Travel to Work	22	22	0	0
Work Mainly at or From Home	570	435	-135	-24
Not in Employment	2,053	2,431	378	18



If you require information contained in this leaflet in another version e.g. large print, Braille, tape or alternative language please telephone: 0116 305 6803, Fax: 0116 305 7271 or Minicom: 0116 305 6160.

ਜੇ ਆਪ ਆ ਮਾਭਿਨੀ ਆਪਨੀ ਆਧਾਮਾਂ ਸਮਝਵਾਮਾਂ ਥੋੜੀ ਮਦਦ ਈਝਤਾਂ ਡੋ ਤੋ 0116 305 6803 ਨੰਬਰ ਪਰ ਝੋਨ ਕਰਥੋ ਅਨੇ ਅਮੇ ਆਪਨੇ ਮਦਦ ਕਰਵਾ ਅਵਥਾ ਕਰੀਯੁੰ.

ਜੇਕਰ ਤੁਹਾਨੂੰ ਇਸ ਜਾਣਕਾਰੀ ਨੂੰ ਸਮਝਣ ਵਿਚ ਕੁਝ ਮਦਦ ਚਾਹੀਦੀ ਹੈ ਤਾਂ ਕਿਰਪਾ ਕਰਕੇ 0116 305 6803 ਨੰਬਰ ਤੇ ਫੋਨ ਕਰੋ ਅਤੇ ਅਸੀਂ ਤੁਹਾਡੀ ਮਦਦ ਲਈ ਕਿਸੇ ਦਾ ਪ੍ਰਬੰਧ ਕਰ ਦਵਾਂਗੇ।

এই তথ্য নিজের ভাষায় বুঝার জন্য আপনার যদি কোন সাহায্যের প্রয়োজন হয়, তবে 0116 305 6803 এই নম্বরে ফোন করলে আমরা উপযুক্ত ব্যক্তির ব্যবস্থা করবো।

اگر آپ کو یہ معلومات سمجھنے میں کچھ مدد درکار ہے تو براہ مہربانی اس نمبر پر کال کریں اور ہم آپ کی مدد کے لئے کسی کا انتظام کر دیں گے۔ 0116 305 6803

假如閣下需要幫助，用你的語言去明白這些資訊，請致電 0116 305 6803，我們會安排有關人員為你提供幫助。

Jeżeli potrzebujesz pomocy w zrozumieniu tej informacji w Twoim języku, zadzwoń pod numer 0116 305 6803, a my Ci dopomożemy.

Research & Insight Team  
Strategy, Partnerships & Communities  
Chief Executive's Department  
Leicestershire County Council  
County Hall  
Glenfield  
Leicester  
LE3 8RA

[ri@leics.gov.uk](mailto:ri@leics.gov.uk)  
[www.lsr-online.org](http://www.lsr-online.org)