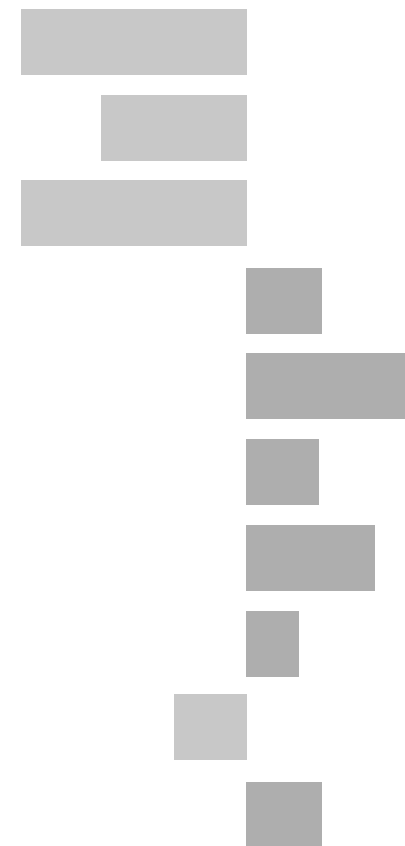


Bradgate Electoral Division

2011 Census Key Statistics

Alex Lea
May 2013

Research and Insight Team
Leicestershire County Council



Alex Lea

Research & Insight Manager

Research & Insight Team
Strategy, Partnerships & Communities
Leicestershire County Council
County Hall
Glenfield
Leicester LE3 8RB

Tel 0116 305 6803

Email alex.lea@leics.gov.uk

Produced by the Research and Insight Team at Leicestershire County Council.

Whilst every effort has been made to ensure the accuracy of the information contained within this report, Leicestershire County Council cannot be held responsible for any errors or omission relating to the data contained within the report.

CONTENTS

Introduction

About this Report	4
2011 Census	4
Data	5
Census Geography	5
Indicator Changes 2001-11	6

Population

KS101EW - Usual Resident Population	7
KS102EW - Age Structure	7

Households

KS105EW - Household Composition	8
KS402EW - Tenure	9

Health and Caring

KS301EW - Health and Provision of Unpaid Care	9
---	---

Ethnicity

KS201EW - Ethnic Group	10
------------------------	----

Economy

KS601EW - Economic Activity	11
KS605EW - Industry	12

Transport

KS404EW - Car and Van Availability	13
QS701EW - Method of Travel to Work	13

INTRODUCTION

ABOUT THIS REPORT

This report provides a broad overview of the 2011 Census Key Statistics data, released by the Office for National Statistics on 30th January 2013, as part of the Second Release. This report summarises a selection of key headline datasets of this release for Leicestershire Electoral Divisions (EDs).

The Research and Insight Team at Leicestershire County Council has used data from the Second release to create an interactive Tableau dashboard containing 32 datasets covering the following geographies:

- England
- East Midlands
- East Midlands counties . Including Leicestershire
- Leicester City and Rutland Unitary Authorities
- Leicestershire districts

In addition, a headline report covers the results for Leicestershire and the seven districts that make up the county. The dashboard and report are available at the following links:

Census 2011 Key Statistics Dashboard

<http://public.tableausoftware.com/views/LAKeyStatsDashboard/Dashboard>

May 2013

Census 2011 Key Statistics Headline Report

http://www.lsr-online.org/reports/census_2011_key_statistics_headline_report/download/1/Census%202011%20Second%20Release%20FINAL.pdf

2011 CENSUS

Census statistics help paint a picture of the nation and how we live. They provide a detailed snapshot of the population and its characteristics, and underpin funding allocation to provide public services.¹ Data from the 2011 Census is made available at a variety of different levels of geography and in various releases.

The Key Statistics data covers a broad range of socio-economic topics, including data on ethnicity, health and employment. Each Key Statistic dataset is referred to by its unique three-digit code with the 'KS' prefix to denote a Key statistic (e.g. KS101). These are used throughout the report.

A full list of the 35 Key Statistics data tables are available here:

<http://www.ons.gov.uk/ons/publications/re-reference-tables.html?edition=tcm%3A77-286262>

¹ Office for National Statistics (ONS), 2013.

Further results from the census will be released throughout 2013, for more information, please visit:

<http://www.lsr-online.org/census-2011.html>

More information on the 2011 Census can be found here:

<http://www.ons.gov.uk/ons/guide-method/census/2011/index.html>

DATA

Data has been compiled for Leicestershire Electoral Divisions, covering the key datasets from the 2011 Census Key statistics.

Figures for 2011 and 2001 are included, along with the overall and percentage change between the two censuses. Data for each indicator is presented in a table and chart.

Population data is displayed in a table, a population pyramid and a chart showing percentage change between 2001 and 2011. All other data is displayed in tables, and charts. Charts for change between 2001 and 2011 are coloured according to the degree of change between the two censuses; grey corresponds to smallest change and green the largest change. A marker indicates the average figure for all Leicestershire Electoral Divisions.

GEOGRAPHY

Maps for all County Council Electoral Divisions can be found here:

http://www.leics.gov.uk/index/your_council/local_democracy/conductofcouncillorsandemployees/electoraldivisionmapsindex/electoraldivisionmaps.htm

As Census data is not made available for Electoral Divisions, smaller areas, called Lower Super Output Areas (LSOAs) have been used as building blocks for the figures included in this report. LSOAs are small parcels of geography, containing a minimum of 1,000 people, a maximum of 3,000 and an average of 1,500. LSOAs were initially developed for the 2001 Census and are used to release a range of neighbourhood-level datasets from various sources. There are 396 LSOAs in Leicestershire.

In some instances, LSOAs do not fit neatly within Electoral Divisions and in these cases, population weighted centroids - representing the 'centre of gravity' for population within an area - have been used in order to assign each LSOA to an Electoral Division. Electoral Divisions that fall within this category are indicated with a (*).

More information on Lower Super Output Areas can be found here:

<http://www.ons.gov.uk/ons/guide-method/geography/beginner-s-guide/census/super-output-areas--soas-/index.html>

INDICATOR CHANGES 2001-11

The following questions were asked in slightly different ways in 2011 compared to 2001. As such, care should be taken when making comparison between years.

KS201EW : Ethnic Group

Asian/Asian British: Chinese
Mixed/multiple ethnic group: Other Mixed
Mixed/multiple ethnic group: White and Asian
Mixed/multiple ethnic group: White and Black African
Mixed/multiple ethnic group: White and Black Caribbean
Other ethnic group: Any other ethnic group
White: English/Welsh/Scottish/Northern Irish/British
White: Other White

KS301EW : Health and Provision of Unpaid Care

Day-to-day activities limited
Day-to-day activities limited: Age 16 to 64
Day-to-day activities not limited
Fair health
Very/ bad Health
Very/ good Health

KS601EW : Economic Activity

All usual residents aged 16 and over
Economically active: Employee: Full-time
Economically active: Employee: Part-time
Economically active: Full-time student

Economically active: Self-employed
Economically active: Unemployed
Economically inactive: Long-term sick or disabled
Economically inactive: Looking after home or family
Economically inactive: Other
Economically inactive: Retired
Economically inactive: Student (including full-time)
Long-term unemployed
Unemployed: Age 50 and over
Unemployed: Never worked

KS605EW : Industry

All usual residents aged 16 and over in employment
A Agriculture, forestry and fishing
B Mining and quarrying
C Manufacturing
D, F Electricity, gas, steam, air conditioning supply etc
F Construction
G Wholesale and retail trade; repair of motor vehicles etc
H, J Transport, storage, information and communication
I Accommodation and food service activities
K Financial and insurance activities
L,M,N Real estate activities Professional, scientific etc
O Public administration and defence etc
P Education
Q Human health and social work activities
R, S, T, U Other

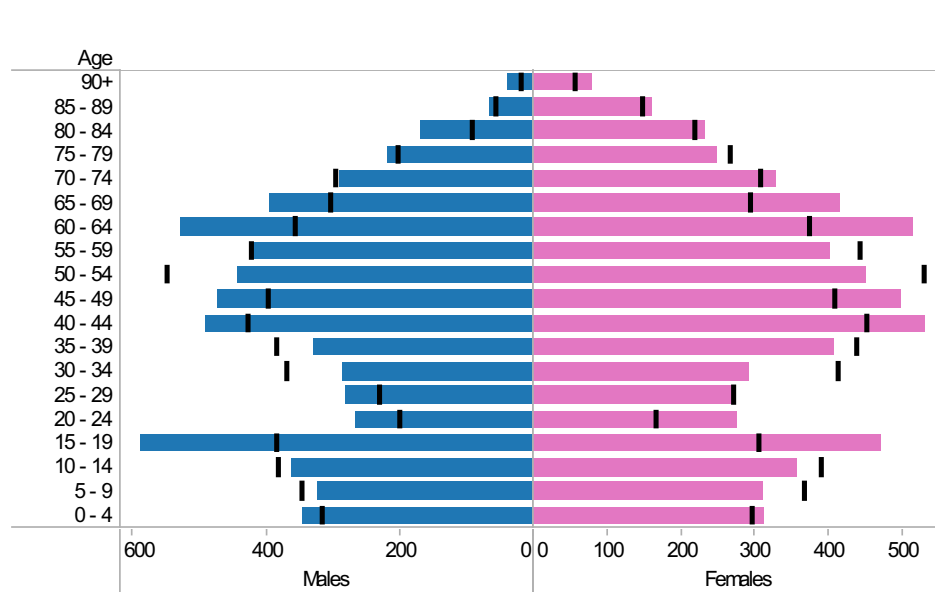
Bradgate* ED: KS101EW : Usual Resident Population, KS102EW : Age Structure

■ Males
 ■ Females
 ■ Persons

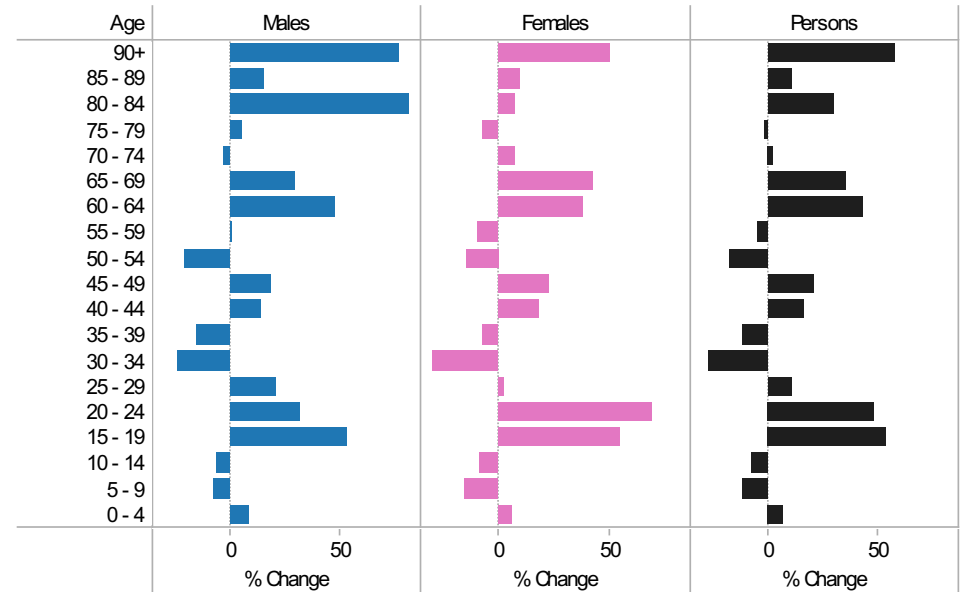
2001-11 Population by sex and quinary age band

Age	Males			Females			Persons		
	2001	2011	Change 2001-11	2001	2011	Change 2001-11	2001	2011	Change 2001-11
90+	21	37	16	54	81	27	75	118	43
85 - 89	57	66	9	146	160	14	203	226	23
80 - 84	93	168	75	216	233	17	309	401	92
75 - 79	204	216	12	266	249	-17	470	465	-5
70 - 74	298	290	-8	306	330	24	604	620	16
65 - 69	305	393	88	292	416	124	597	809	212
60 - 64	358	528	170	372	514	142	730	1,042	312
55 - 59	425	425	0	442	403	-39	867	828	-39
50 - 54	551	441	-110	527	451	-76	1,078	892	-186
45 - 49	398	473	75	406	498	92	804	971	167
40 - 44	429	490	61	450	531	81	879	1,021	142
35 - 39	386	328	-58	436	406	-30	822	734	-88
30 - 34	372	285	-87	412	292	-120	784	577	-207
25 - 29	232	280	48	269	275	6	501	555	54
20 - 24	202	266	64	164	277	113	366	543	177
15 - 19	386	589	203	304	470	166	690	1,059	369
10 - 14	384	361	-23	389	356	-33	773	717	-56
5 - 9	348	323	-25	365	310	-55	713	633	-80
0 - 4	318	346	28	295	313	18	613	659	46
All Ages	5,767	6,305	538	6,111	6,565	454	11,878	12,870	992

2011 (coloured bars) and 2001 (black marks) population by sex and quinary age age

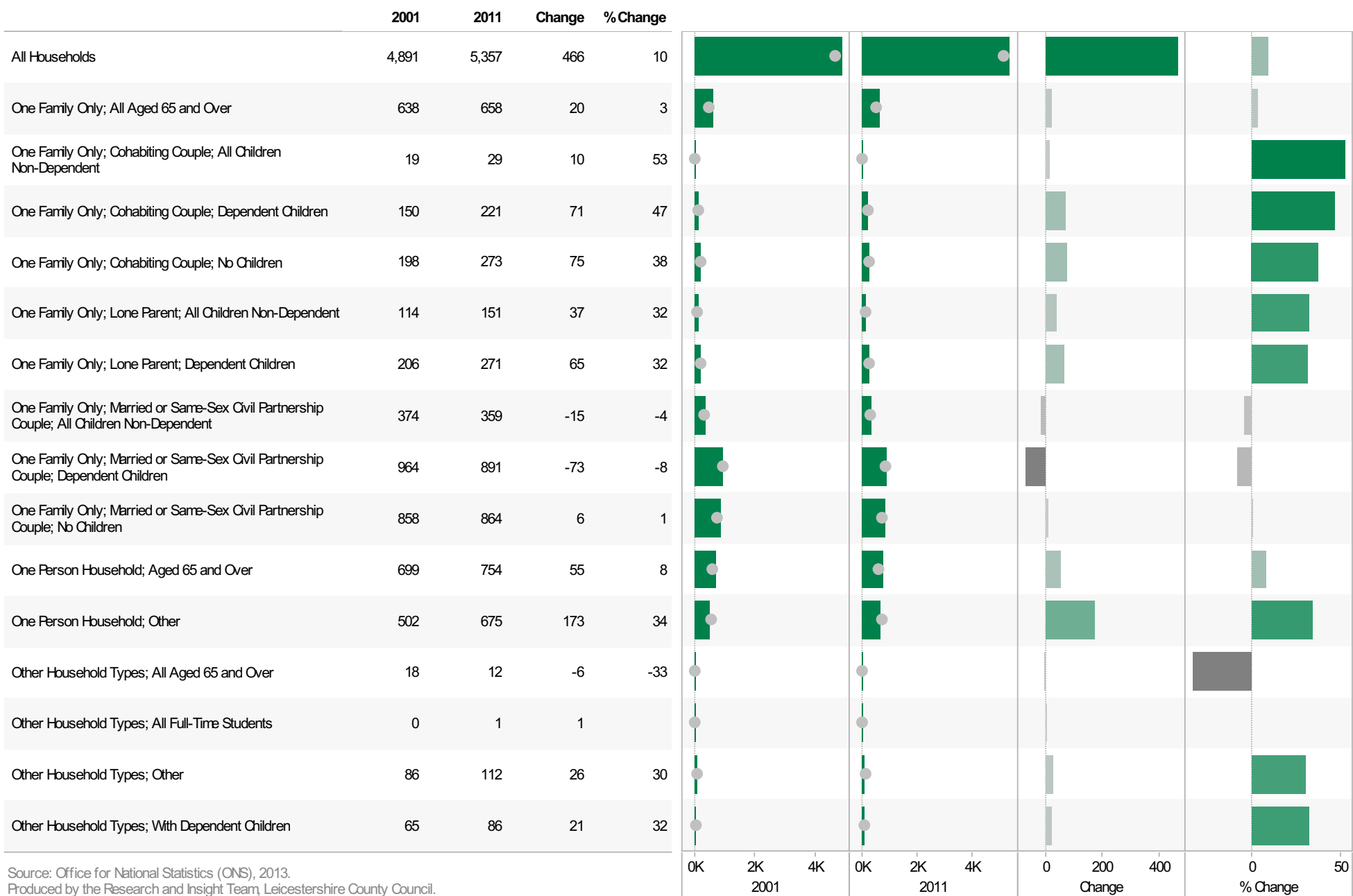


2001-11 Percentage change by sex and quinary age band



Bradgate* ED
KS105EW : Household Composition, 2001-11

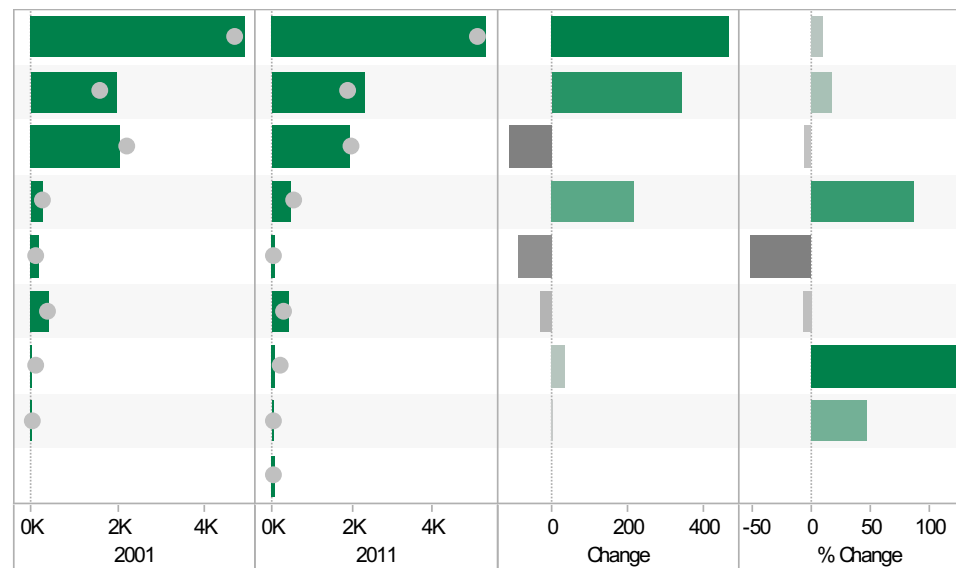
Coloured bar - data for Electoral Division
Grey circle - average for all Leicestershire Electoral Divisions



Source: Office for National Statistics (ONS), 2013.
 Produced by the Research and Insight Team, Leicestershire County Council.

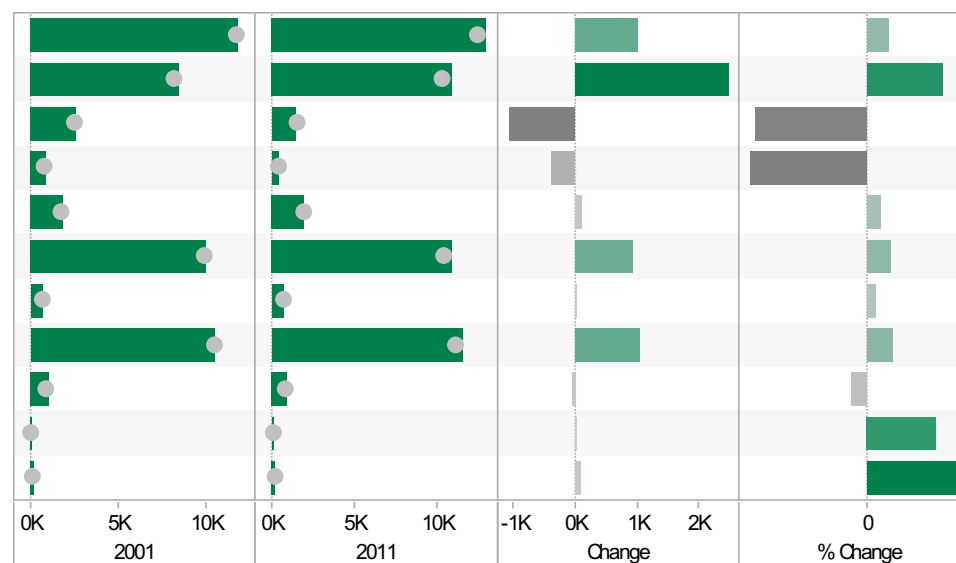
**Bradgate* ED
KS402EW: Tenure, 2001-11**

	2001	2011	Change	% Change
All Households	4,895	5,357	462	9
Owned; Owned Outright	1,974	2,316	342	17
Owned; Owned with a Mortgage or Loan	2,039	1,927	-112	-5
Private Rented; Private Landlord or Letting Agency	246	461	215	87
Private Rented; Other	166	79	-87	-52
Social Rented; Rented from Council (Local Authority)	428	396	-32	-7
Social Rented; Other	27	63	36	133
Shared Ownership (Part Owned and Part Rented)	15	22	7	47
Living Rent Free		93		



**Bradgate* ED
KS301EW: Health and Provision of Unpaid Care, 2001-11**

	2001	2011	Change	% Change
All usual residents	11,856	12,870	1,014	9
Very/ good Health	8,456	10,919	2,463	29
Fair health	2,562	1,485	-1,077	-42
Very/ bad Health	838	466	-372	-44
Day-to-day activities limited	1,856	1,955	99	5
Day-to-day activities not limited	10,000	10,915	915	9
Day-to-day activities limited a lot: Age 16 to 64	705	729	24	3
Provides no unpaid care	10,448	11,479	1,031	10
Provides 1 to 19 hours unpaid care a week	1,071	1,007	-64	-6
Provides 20 to 49 hours unpaid care a week	114	144	30	26
Provides 50 or more hours unpaid care a week	173	240	67	39

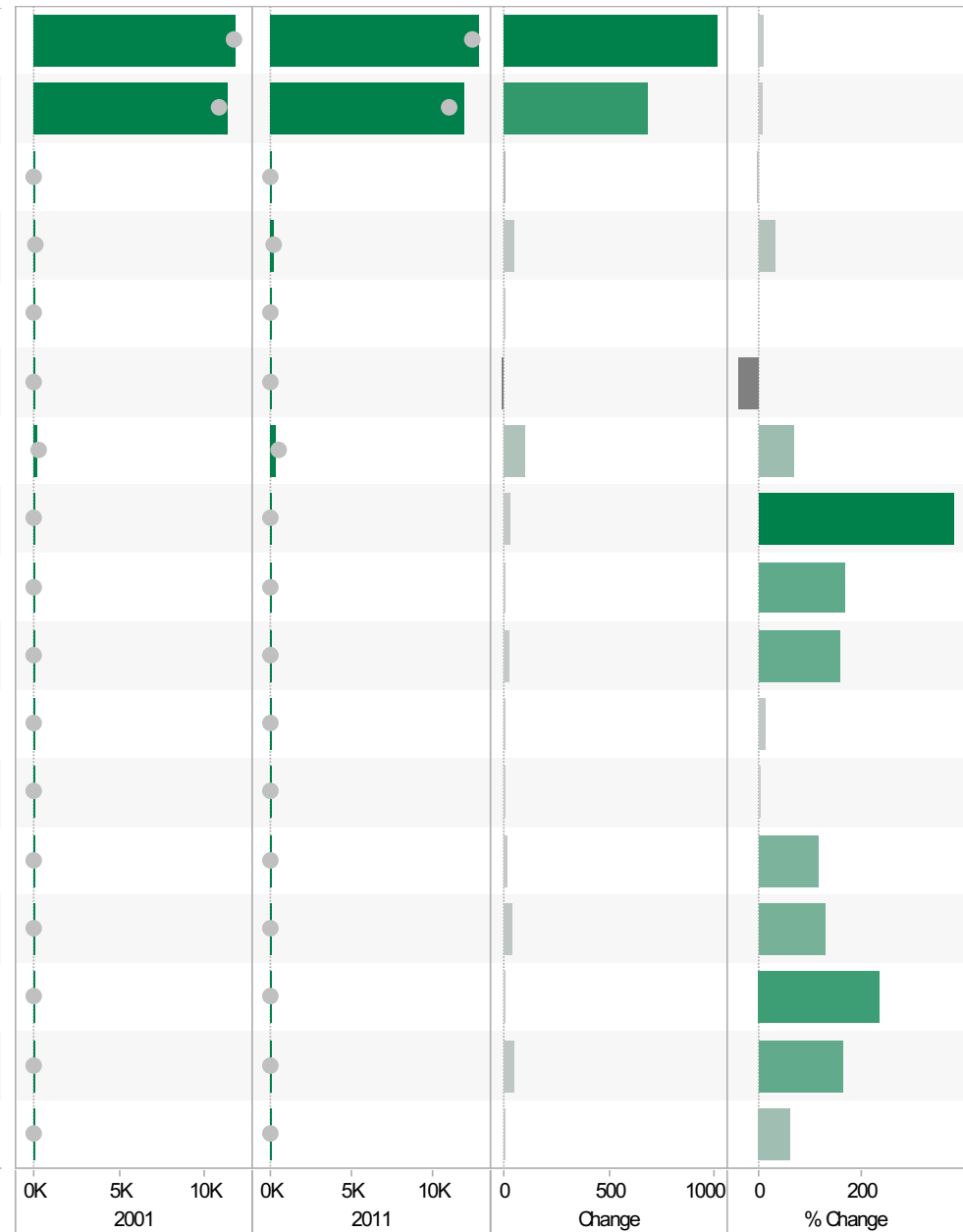


Source: Office for National Statistics (ONS), 2013.
Produced by the Research and Insight Team, Leicestershire County Council.

Bradgate* ED
KS201EW : Ethnic Group, 2001-11

Coloured bar - data for Electoral Division
Grey circle - average for all Leicestershire Electoral Divisions

	2001	2011	Change	% Change
All usual residents	11,862	12,870	1,008	8
White: English/Welsh/Scottish/Northern Irish/British	11,305	11,989	684	6
White: Irish	83	80	-3	-4
White: Other White	144	191	47	33
Asian/Asian British: Bangladeshi	0	5	5	
Asian/Asian British: Chinese	30	18	-12	-40
Asian/Asian British: Indian	153	255	102	67
Asian/Asian British: Other Asian	9	43	34	378
Asian/Asian British: Pakistani	3	8	5	167
Black/African/Caribbean/Black British: African	14	36	22	157
Black/African/Caribbean/Black British: Caribbean	22	25	3	14
Black/African/Caribbean/Black British: Other Black	6	6	0	0
Mixed/multiple ethnic group: Other Mixed	12	26	14	117
Mixed/multiple ethnic group: White and Asian	33	75	42	127
Mixed/multiple ethnic group: White and Black African	3	10	7	233
Mixed/multiple ethnic group: White and Black Caribbean	30	79	49	163
Other ethnic group: Any other ethnic group	15	24	9	60

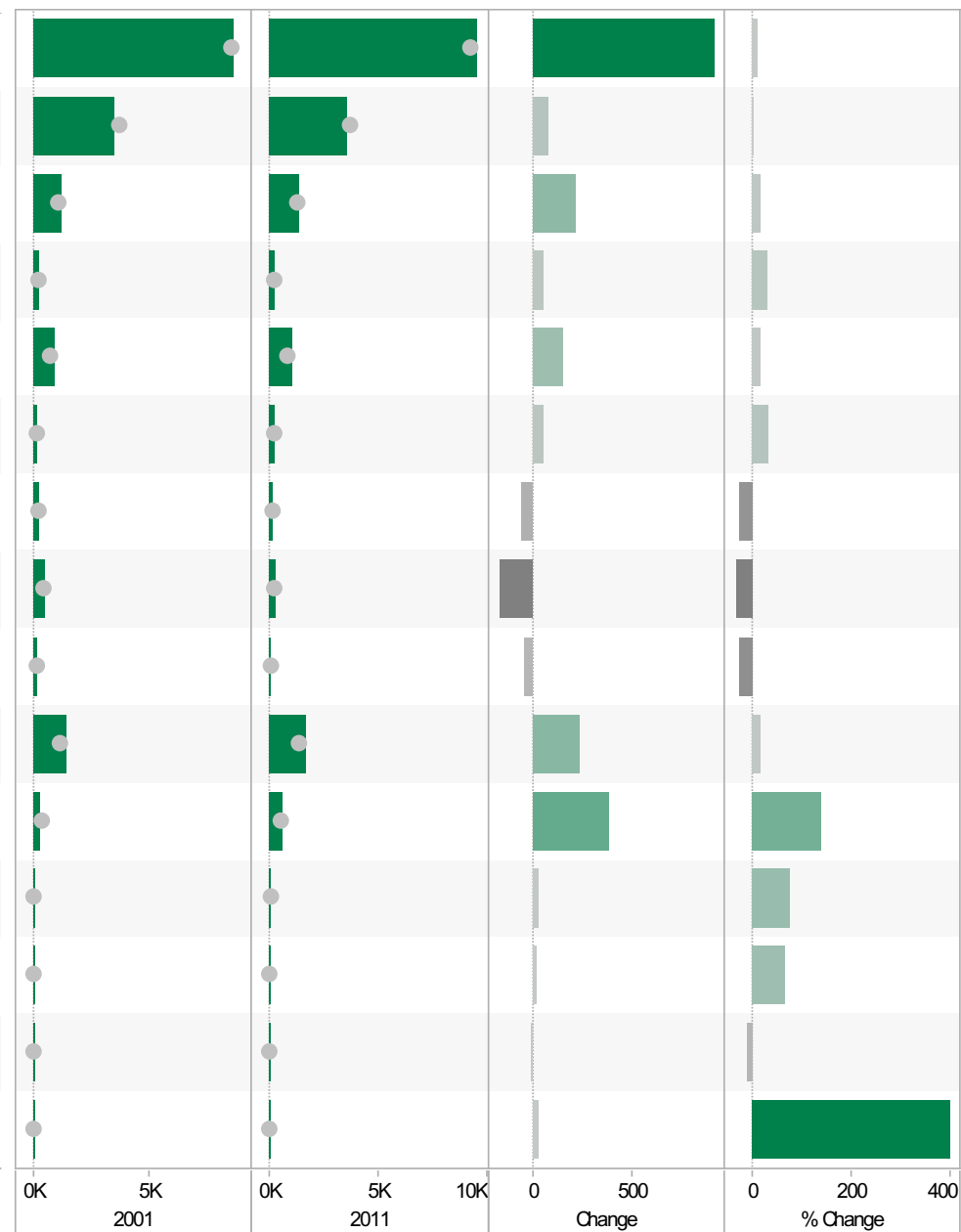


Source: Office for National Statistics (ONS), 2013.
Produced by the Research and Insight Team, Leicestershire County Council.

Bradgate* ED
KS601EW : Economic Activity, 2001-11

Coloured bar - data for Electoral Division
Grey circle - average for all Leicestershire Electoral Divisions

	2001	2011	Change	% Change
All usual residents aged 16 and over	8,590	9,495	905	11
Economically active: Employee: Full-time	3,509	3,584	75	2
Economically active: Employee: Part-time	1,178	1,393	215	18
Economically active: Full-time student	185	239	54	29
Economically active: Self-employed	953	1,106	153	16
Economically active: Unemployed	164	218	54	33
Economically inactive: Long-term sick or disabled	227	171	-56	-25
Economically inactive: Looking after home or family	483	316	-167	-35
Economically inactive: Other	159	116	-43	-27
Economically inactive: Retired	1,458	1,694	236	16
Economically inactive: Student (including full-time students)	274	658	384	140
Long-term unemployed	38	67	29	76
Unemployed: Age 16 to 24	33	55	22	67
Unemployed: Age 50 and over	54	49	-5	-9
Unemployed: Never worked	6	30	24	400

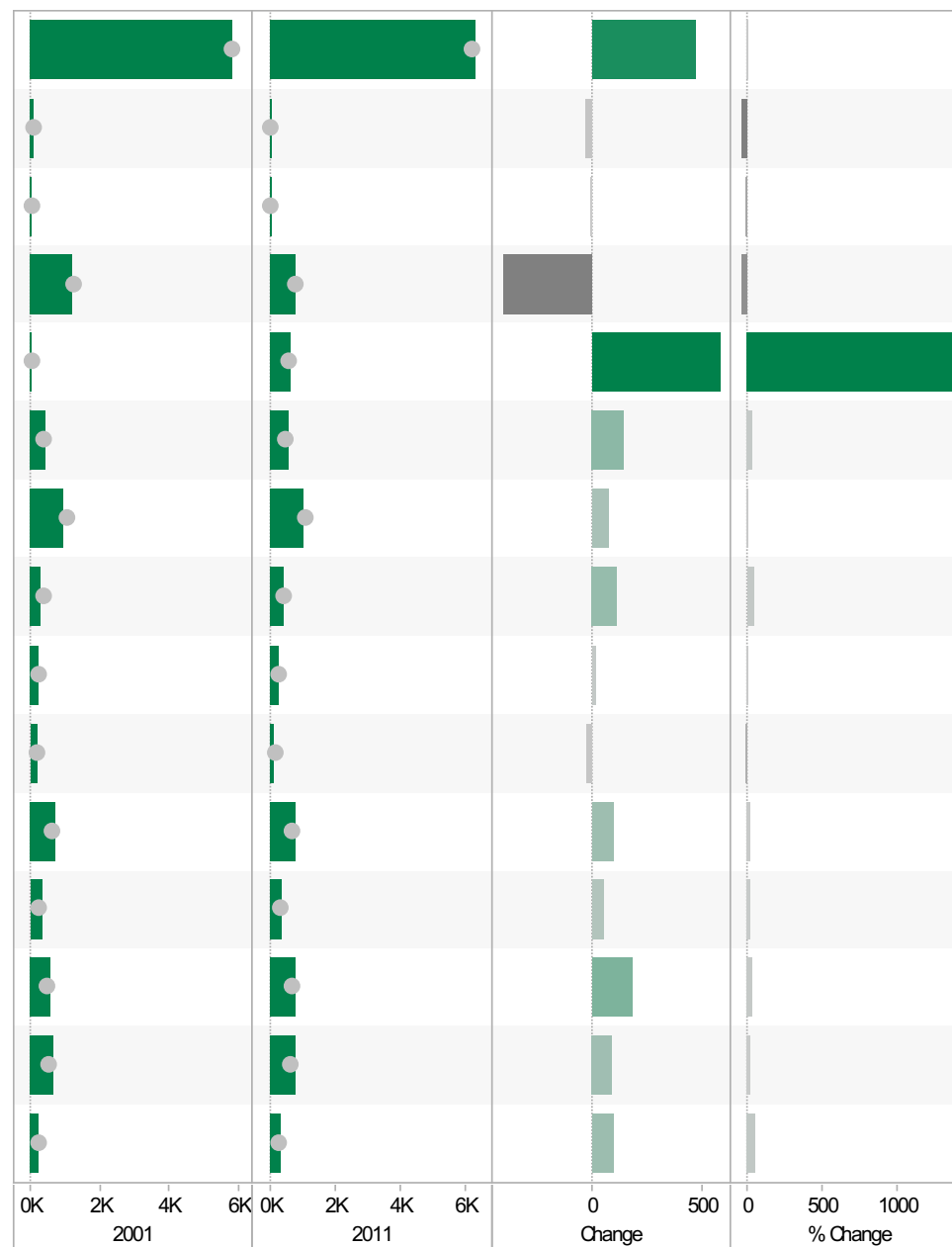


Source: Office for National Statistics (ONS), 2013.
 Produced by the Research and Insight Team, Leicestershire County Council.

Bradgate* ED
KS605EW : Industry, 2001-11

Coloured bar - data for Electoral Division
Grey circle - average for all Leicestershire Electoral Divisions

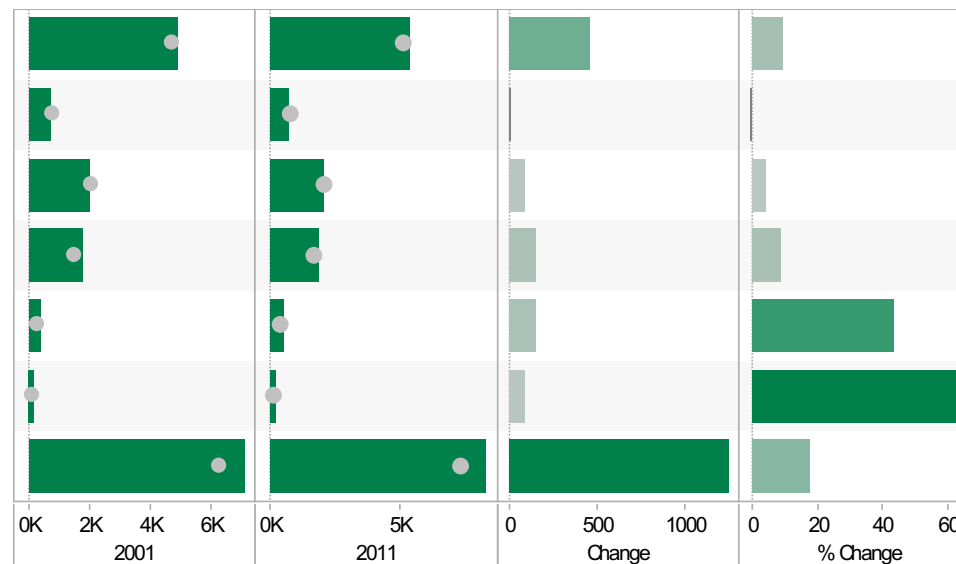
	2001	2011	Change	% Change
All usual residents aged 16 and over in employment	5,814	6,284	470	8
A Agriculture, forestry and fishing	61	34	-27	-44
B Mining and quarrying	19	15	-4	-21
C Manufacturing	1,183	780	-403	-34
D, F Electricity, gas, steam, air conditioning supply, water and sewerage	41	618	577	1,407
F Construction	430	570	140	33
G Wholesale and retail trade; repair of motor vehicles and motor cycles	943	1,016	73	8
H, J Transport, storage, information and communication	289	404	115	40
I Accommodation and food service activities	233	249	16	7
K Financial and insurance activities	159	133	-26	-16
L, M, N Real estate activities Professional, scientific and technical activities Administrative and support service activities	697	794	97	14
O Public administration and defence; compulsory social security	298	351	53	18
P Education	579	757	178	31
Q Human health and social work activities	669	762	93	14
R, S, T, U Other	213	315	102	48



Source: Office for National Statistics (ONS), 2013.
 Produced by the Research and Insight Team, Leicestershire County Council.

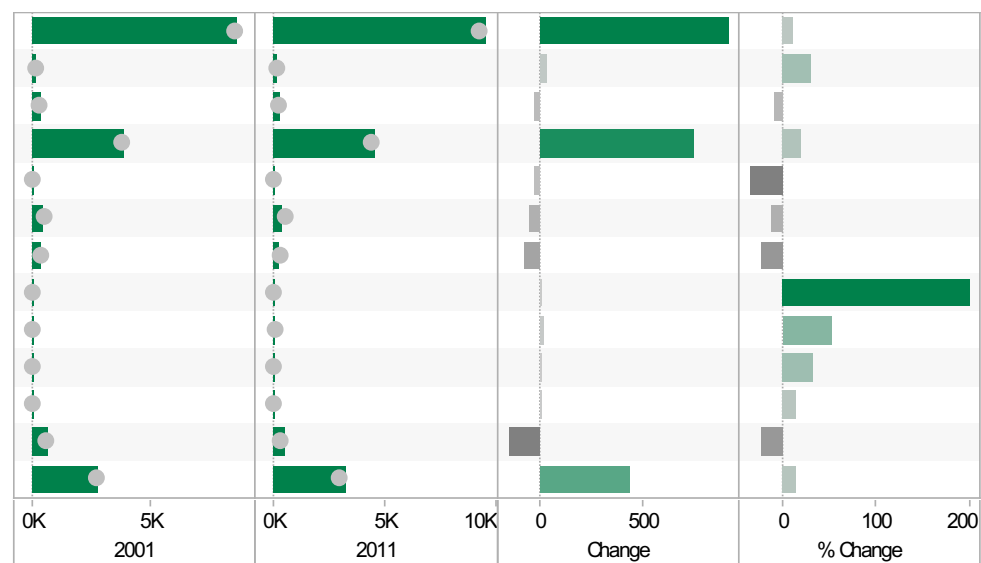
Bradgate* ED
KS404EW : Car and Van Availability, 2001-11

	2001	2011	Change	% Change
All Households	4,893	5,357	464	9
No Cars or Vans in Household	709	703	-6	-1
1 Car or Van in Household	1,963	2,045	82	4
2 Cars or Vans in Household	1,742	1,893	151	9
3 Cars or Vans in Household	356	511	155	44
4 or More Cars or Vans in Household	123	205	82	67
All Cars or Vans in the Area	7,064	8,310	1,246	18



Bradgate* ED
QS701EW : Method of Travel to Work, 2001-11

	2001	2011	Change	% Change
All Usual Residents Aged 16 to 74	8,587	9,495	908	11
Bicycle	114	149	35	31
Bus, Minibus or Coach	334	305	-29	-9
Driving a Car or Van	3,818	4,560	742	19
Motorcycle, Scooter or Moped	69	45	-24	-35
On Foot	424	373	-51	-12
Passenger in a Car or Van	321	246	-75	-23
Taxi	3	9	6	200
Train	30	46	16	53
Underground, Metro, Light Rail, Tram	3	4	1	33
Other Method of Travel to Work	28	32	4	14
Work Mainly at or From Home	667	515	-152	-23
Not in Employment	2,776	3,211	435	16



Source: Office for National Statistics (ONS), 2013.
 Produced by the Research and Insight Team, Leicestershire County Council.

If you require information contained in this leaflet in another version e.g. large print, Braille, tape or alternative language please telephone: 0116 305 6803, Fax: 0116 305 7271 or Minicom: 0116 305 6160.

ਜੇ ਆਪ ਆ ਮਾਭਿਨੀ ਆਪਨੀ ਆਧਾਮਾਂ ਸਮਝਵਾਮਾਂ ਥੋੜੀ ਮਦਦ ਈਝਤਾਂ ਡੋ ਤੋ 0116 305 6803 ਨੰਬਰ ਪਰ ਝੋਨ ਕਰਥੋ ਅਨੇ ਅਮੇ ਆਪਨੇ ਮਦਦ ਕਰਵਾ ਆਵਥਾ ਕਰੀਥੁੰ.

ਜੇਕਰ ਤੁਹਾਨੂੰ ਇਸ ਜਾਣਕਾਰੀ ਨੂੰ ਸਮਝਣ ਵਿਚ ਕੁਝ ਮਦਦ ਚਾਹੀਦੀ ਹੈ ਤਾਂ ਕਿਰਪਾ ਕਰਕੇ 0116 305 6803 ਨੰਬਰ ਤੇ ਫ਼ੋਨ ਕਰੋ ਅਤੇ ਅਸੀਂ ਤੁਹਾਡੀ ਮਦਦ ਲਈ ਕਿਸੇ ਦਾ ਪ੍ਰਬੰਧ ਕਰ ਦਵਾਂਗੇ।

এই তথ্য নিজের ভাষায় বুঝার জন্য আপনার যদি কোন সাহায্যের প্রয়োজন হয়, তবে 0116 305 6803 এই নম্বরে ফোন করলে আমরা উপযুক্ত ব্যক্তির ব্যবস্থা করবো।

اگر آپ کو یہ معلومات سمجھنے میں کچھ مدد درکار ہے تو براہ مہربانی اس نمبر پر کال کریں اور ہم آپ کی مدد کے لئے کسی کا انتظام کر دیں گے۔ 0116 305 6803

假如閣下需要幫助，用你的語言去明白這些資訊，請致電 0116 305 6803，我們會安排有關人員為你提供幫助。

Jeżeli potrzebujesz pomocy w zrozumieniu tej informacji w Twoim języku, zadzwoń pod numer 0116 305 6803, a my Ci dopomożemy.

Research & Insight Team
Strategy, Partnerships & Communities
Chief Executive's Department
Leicestershire County Council
County Hall
Glenfield
Leicester
LE3 8RA

ri@leics.gov.uk
www.lsr-online.org