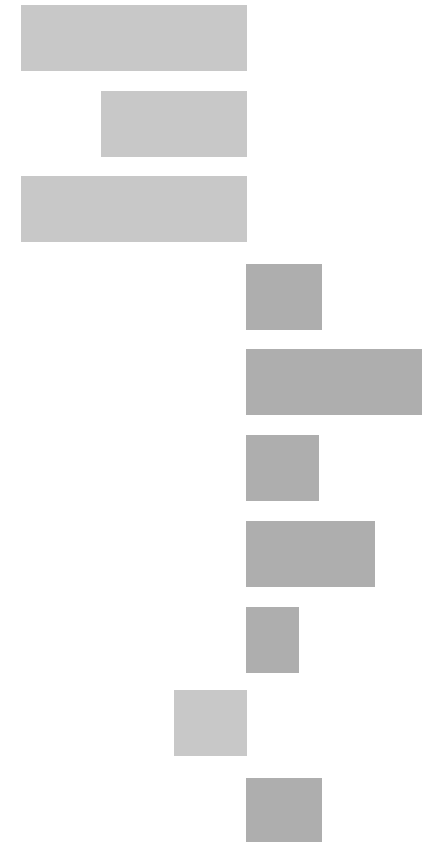


# Sileby and The Wolds Electoral Division

## 2011 Census Key Statistics

Alex Lea  
May 2013

Research and Insight Team  
Leicestershire County Council



**Alex Lea**

Research & Insight Manager

Research & Insight Team  
Strategy, Partnerships & Communities  
Leicestershire County Council  
County Hall  
Glenfield  
Leicester LE3 8RB

Tel 0116 305 6803

Email [alex.lea@leics.gov.uk](mailto:alex.lea@leics.gov.uk)

Produced by the Research and Insight Team at Leicestershire County Council.

Whilst every effort has been made to ensure the accuracy of the information contained within this report, Leicestershire County Council cannot be held responsible for any errors or omission relating to the data contained within the report.

## CONTENTS

### Introduction

About this Report	4
2011 Census	4
Data	5
Census Geography	5
Indicator Changes 2001-11	6

### Population

KS101EW - Usual Resident Population	7
KS102EW - Age Structure	7

### Households

KS105EW - Household Composition	8
KS402EW - Tenure	9

### Health and Caring

KS301EW - Health and Provision of Unpaid Care	9
---	---

### Ethnicity

KS201EW - Ethnic Group	10
------------------------	----

### Economy

KS601EW - Economic Activity	11
KS605EW - Industry	12

### Transport

KS404EW - Car and Van Availability	13
QS701EW - Method of Travel to Work	13

## INTRODUCTION

### ABOUT THIS REPORT

This report provides a broad overview of the 2011 Census Key Statistics data, released by the Office for National Statistics on 30th January 2013, as part of the Second Release. This report summarises a selection of key headline datasets of this release for Leicestershire Electoral Divisions (EDs).

The Research and Insight Team at Leicestershire County Council has used data from the Second release to create an interactive Tableau dashboard containing 32 datasets covering the following geographies:

- England
- East Midlands
- East Midlands counties . Including Leicestershire
- Leicester City and Rutland Unitary Authorities
- Leicestershire districts

In addition, a headline report covers the results for Leicestershire and the seven districts that make up the county. The dashboard and report are available at the following links:

#### Census 2011 Key Statistics Dashboard

<http://public.tableausoftware.com/views/LAKeyStatsDashboard/Dashboard>

May 2013

#### Census 2011 Key Statistics Headline Report

[http://www.lsr-online.org/reports/census\\_2011\\_key\\_statistics\\_headline\\_report/download/1/Census%202011%20Second%20Release%20FINAL.pdf](http://www.lsr-online.org/reports/census_2011_key_statistics_headline_report/download/1/Census%202011%20Second%20Release%20FINAL.pdf)

### 2011 CENSUS

Census statistics help paint a picture of the nation and how we live. They provide a detailed snapshot of the population and its characteristics, and underpin funding allocation to provide public services.<sup>1</sup> Data from the 2011 Census is made available at a variety of different levels of geography and in various releases.

The Key Statistics data covers a broad range of socio-economic topics, including data on ethnicity, health and employment. Each Key Statistic dataset is referred to by its unique three-digit code with the 'KS' prefix to denote a Key statistic (e.g. KS101). These are used throughout the report.

A full list of the 35 Key Statistics data tables are available here:

<http://www.ons.gov.uk/ons/publications/re-reference-tables.html?edition=tcm%3A77-286262>

<sup>1</sup> Office for National Statistics (ONS), 2013.

Further results from the census will be released throughout 2013, for more information, please visit:

<http://www.lsr-online.org/census-2011.html>

More information on the 2011 Census can be found here:

<http://www.ons.gov.uk/ons/guide-method/census/2011/index.html>

## DATA

Data has been compiled for Leicestershire Electoral Divisions, covering the key datasets from the 2011 Census Key statistics.

Figures for 2011 and 2001 are included, along with the overall and percentage change between the two censuses. Data for each indicator is presented in a table and chart.

Population data is displayed in a table, a population pyramid and a chart showing percentage change between 2001 and 2011. All other data is displayed in tables, and charts. Charts for change between 2001 and 2011 are coloured according to the degree of change between the two censuses; grey corresponds to smallest change and green the largest change. A marker indicates the average figure for all Leicestershire Electoral Divisions.

## GEOGRAPHY

Maps for all County Council Electoral Divisions can be found here:

[http://www.leics.gov.uk/index/your\\_council/local\\_democracy/conductofcouncillorsandemployees/electoraldivisionmapsindex/electoraldivisionmaps.htm](http://www.leics.gov.uk/index/your_council/local_democracy/conductofcouncillorsandemployees/electoraldivisionmapsindex/electoraldivisionmaps.htm)

As Census data is not made available for Electoral Divisions, smaller areas, called Lower Super Output Areas (LSOAs) have been used as building blocks for the figures included in this report. LSOAs are small parcels of geography, containing a minimum of 1,000 people, a maximum of 3,000 and an average of 1,500. LSOAs were initially developed for the 2001 Census and are used to release a range of neighbourhood-level datasets from various sources. There are 396 LSOAs in Leicestershire.

In some instances, LSOAs do not fit neatly within Electoral Divisions and in these cases, population weighted centroids - representing the 'centre of gravity' for population within an area - have been used in order to assign each LSOA to an Electoral Division. Electoral Divisions that fall within this category are indicated with a (\*).

More information on Lower Super Output Areas can be found here:

<http://www.ons.gov.uk/ons/guide-method/geography/beginner-s-guide/census/super-output-areas--soas-/index.html>

## INDICATOR CHANGES 2001-11

The following questions were asked in slightly different ways in 2011 compared to 2001. As such, care should be taken when making comparison between years.

### **KS201EW : Ethnic Group**

Asian/Asian British: Chinese  
Mixed/multiple ethnic group: Other Mixed  
Mixed/multiple ethnic group: White and Asian  
Mixed/multiple ethnic group: White and Black African  
Mixed/multiple ethnic group: White and Black Caribbean  
Other ethnic group: Any other ethnic group  
White: English/Welsh/Scottish/Northern Irish/British  
White: Other White

### **KS301EW : Health and Provision of Unpaid Care**

Day-to-day activities limited  
Day-to-day activities limited: Age 16 to 64  
Day-to-day activities not limited  
Fair health  
Very/ bad Health  
Very/ good Health

### **KS601EW : Economic Activity**

All usual residents aged 16 and over  
Economically active: Employee: Full-time  
Economically active: Employee: Part-time  
Economically active: Full-time student

Economically active: Self-employed  
Economically active: Unemployed  
Economically inactive: Long-term sick or disabled  
Economically inactive: Looking after home or family  
Economically inactive: Other  
Economically inactive: Retired  
Economically inactive: Student (including full-time)  
Long-term unemployed  
Unemployed: Age 50 and over  
Unemployed: Never worked

### **KS605EW : Industry**

All usual residents aged 16 and over in employment  
A Agriculture, forestry and fishing  
B Mining and quarrying  
C Manufacturing  
D, F Electricity, gas, steam, air conditioning supply etc  
F Construction  
G Wholesale and retail trade; repair of motor vehicles etc  
H, J Transport, storage, information and communication  
I Accommodation and food service activities  
K Financial and insurance activities  
L,M,N Real estate activities Professional, scientific etc  
O Public administration and defence etc  
P Education  
Q Human health and social work activities  
R, S, T, U Other

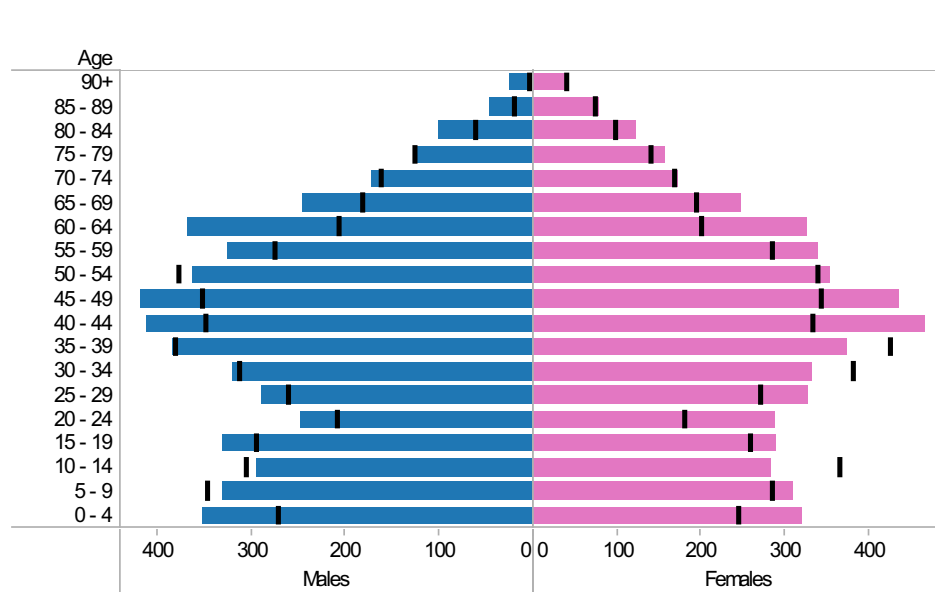
**Sibley and the Wolds\* ED: KS101EW : Usual Resident Population, KS102EW : Age Structure**

■ Males ■ Females ■ Persons

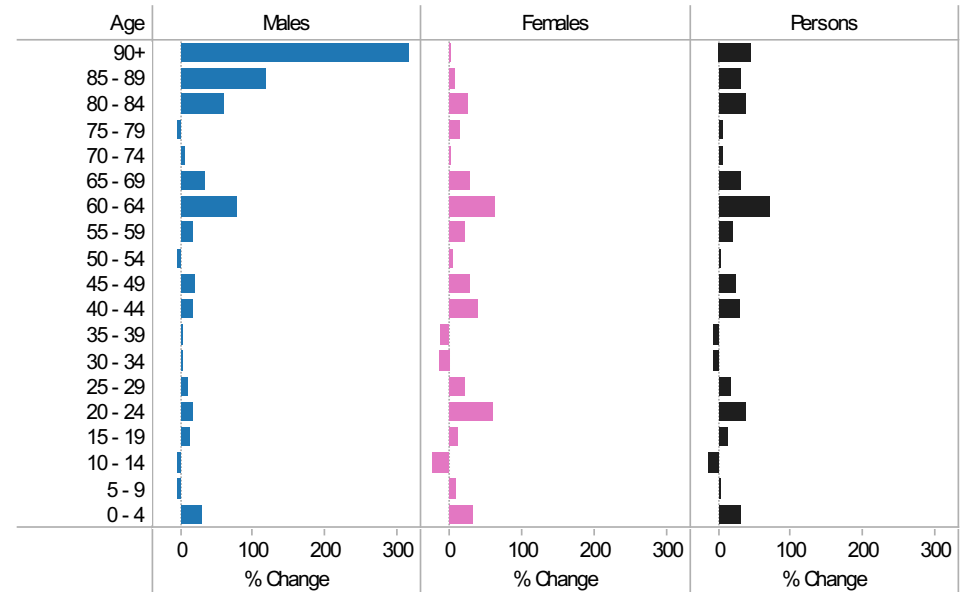
**2001-11 Population by sex and quinary age band**

Age	Males			Females			Persons		
	2001	2011	Change 2001-11	2001	2011	Change 2001-11	2001	2011	Change 2001-11
90+	6	25	19	38	39	1	44	64	20
85 - 89	21	46	25	73	78	5	94	124	30
80 - 84	63	100	37	97	122	25	160	222	62
75 - 79	128	124	-4	139	158	19	267	282	15
70 - 74	163	172	9	167	173	6	330	345	15
65 - 69	183	246	63	193	248	55	376	494	118
60 - 64	207	368	161	199	327	128	406	695	289
55 - 59	275	324	49	283	341	58	558	665	107
50 - 54	378	361	-17	339	355	16	717	716	-1
45 - 49	353	418	65	342	437	95	695	855	160
40 - 44	349	410	61	332	468	136	681	878	197
35 - 39	382	383	1	425	375	-50	807	758	-49
30 - 34	314	318	4	380	333	-47	694	651	-43
25 - 29	261	288	27	269	328	59	530	616	86
20 - 24	210	247	37	179	287	108	389	534	145
15 - 19	295	330	35	257	291	34	552	621	69
10 - 14	306	294	-12	365	284	-81	671	578	-93
5 - 9	347	330	-17	284	311	27	631	641	10
0 - 4	272	352	80	243	321	78	515	673	158
All Ages	4,513	5,136	623	4,604	5,276	672	9,117	10,412	1,295

**2011 (coloured bars) and 2001 (black marks) population by sex and quinary age age**

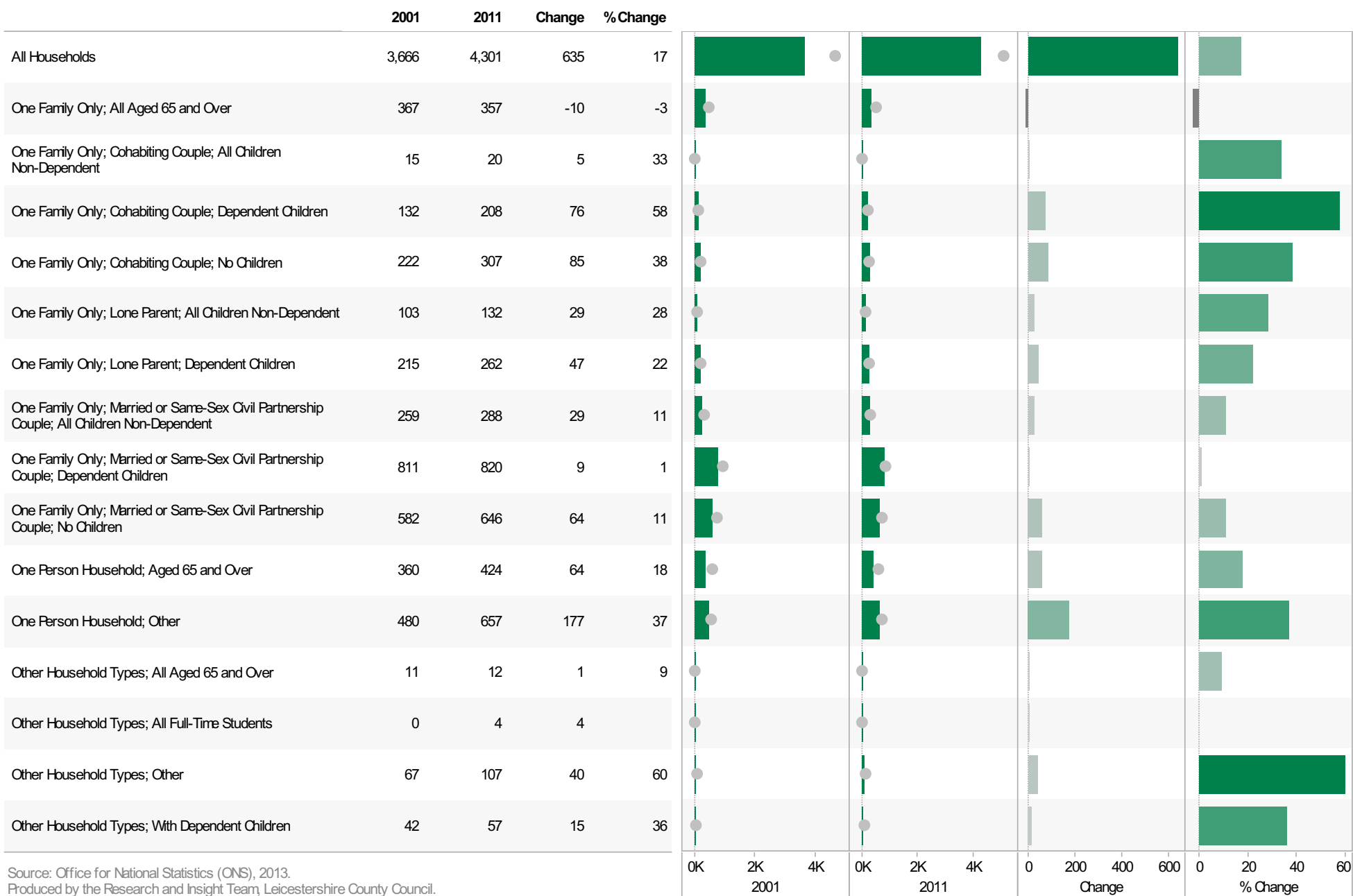


**2001-11 Percentage change by sex and quinary age band**



**Sileby and the Wolds\* ED**  
**KS105EW : Household Composition, 2001-11**

**Coloured bar** - data for Electoral Division  
**Grey circle** - average for all Leicestershire Electoral Divisions

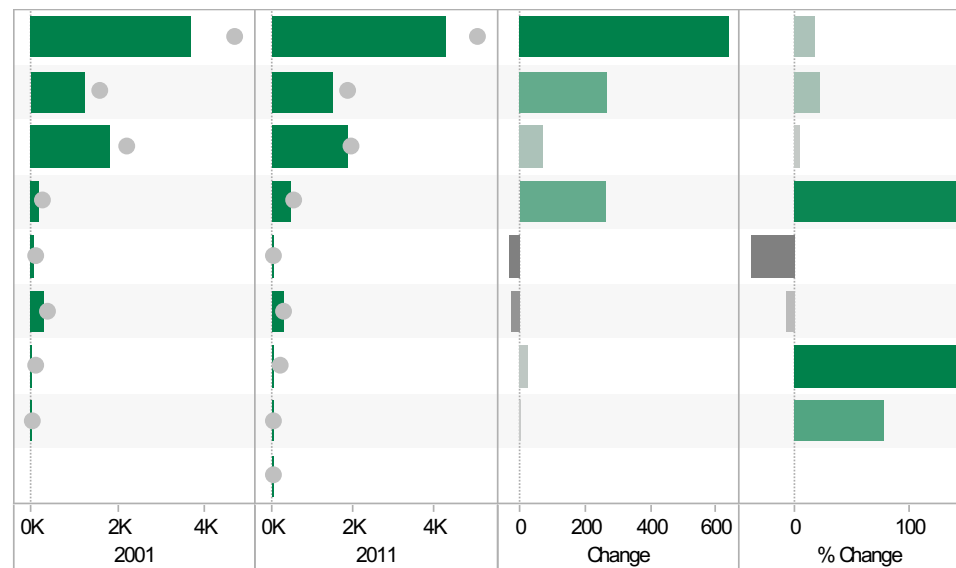


Source: Office for National Statistics (ONS), 2013.  
 Produced by the Research and Insight Team, Leicestershire County Council.



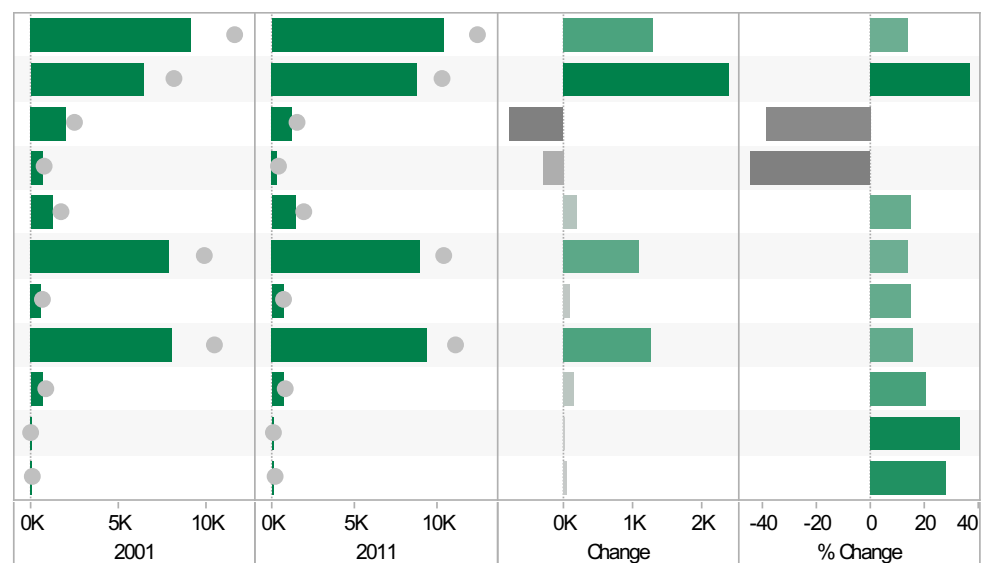
**Sileby and the Wolds\* ED  
KS402EW: Tenure, 2001-11**

	2001	2011	Change	% Change
All Households	3,665	4,301	636	17
Owned; Owned Outright	1,245	1,515	270	22
Owned; Owned with a Mortgage or Loan	1,816	1,889	73	4
Private Rented; Private Landlord or Letting Agency	188	454	266	141
Private Rented; Other	80	48	-32	-40
Social Rented; Rented from Council (Local Authority)	308	285	-23	-7
Social Rented; Other	19	48	29	153
Shared Ownership (Part Owned and Part Rented)	9	16	7	78
Living Rent Free		46		



**Sileby and the Wolds\* ED  
KS301EW: Health and Provision of Unpaid Care, 2001-11**

	2001	2011	Change	% Change
All usual residents	9,132	10,412	1,280	14
Very/ good Health	6,438	8,805	2,367	37
Fair health	2,051	1,252	-799	-39
Very/ bad Health	643	355	-288	-45
Day-to-day activities limited	1,292	1,486	194	15
Day-to-day activities not limited	7,840	8,926	1,086	14
Day-to-day activities limited a lot: Age 16 to 64	616	711	95	15
Provides no unpaid care	8,077	9,332	1,255	16
Provides 1 to 19 hours unpaid care a week	667	805	138	21
Provides 20 to 49 hours unpaid care a week	78	104	26	33
Provides 50 or more hours unpaid care a week	133	171	38	29

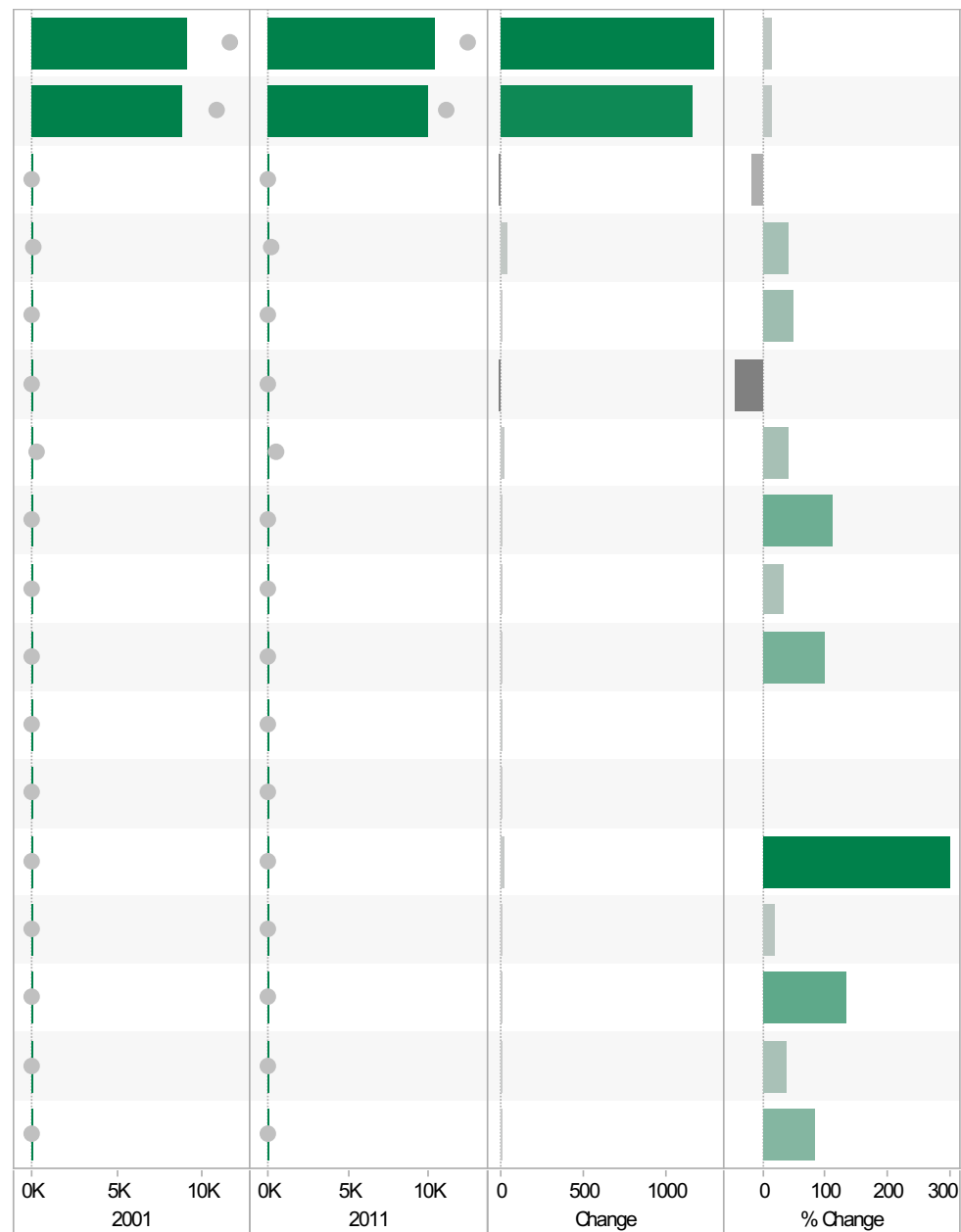


Source: Office for National Statistics (ONS), 2013.  
Produced by the Research and Insight Team, Leicestershire County Council.

**Sileby and the Wolds\* ED**  
**KS201EW : Ethnic Group, 2001-11**

**Coloured bar** - data for Electoral Division  
**Grey circle** - average for all Leicestershire Electoral Divisions

	2001	2011	Change	% Change
All usual residents	9,128	10,412	1,284	14
White: English/Welsh/Scottish/Northern Irish/British	8,822	9,981	1,159	13
White: Irish	53	44	-9	-17
White: Other White	102	145	43	42
Asian/Asian British: Bangladeshi	4	6	2	50
Asian/Asian British: Chinese	22	12	-10	-45
Asian/Asian British: Indian	54	76	22	41
Asian/Asian British: Other Asian	8	17	9	113
Asian/Asian British: Pakistani	3	4	1	33
Black/African/Caribbean/Black British: African	4	8	4	100
Black/African/Caribbean/Black British: Caribbean	0	12	12	
Black/African/Caribbean/Black British: Other Black	0	4	4	
Mixed/multiple ethnic group: Other Mixed	8	32	24	300
Mixed/multiple ethnic group: White and Asian	20	24	4	20
Mixed/multiple ethnic group: White and Black African	6	14	8	133
Mixed/multiple ethnic group: White and Black Caribbean	16	22	6	38
Other ethnic group: Any other ethnic group	6	11	5	83

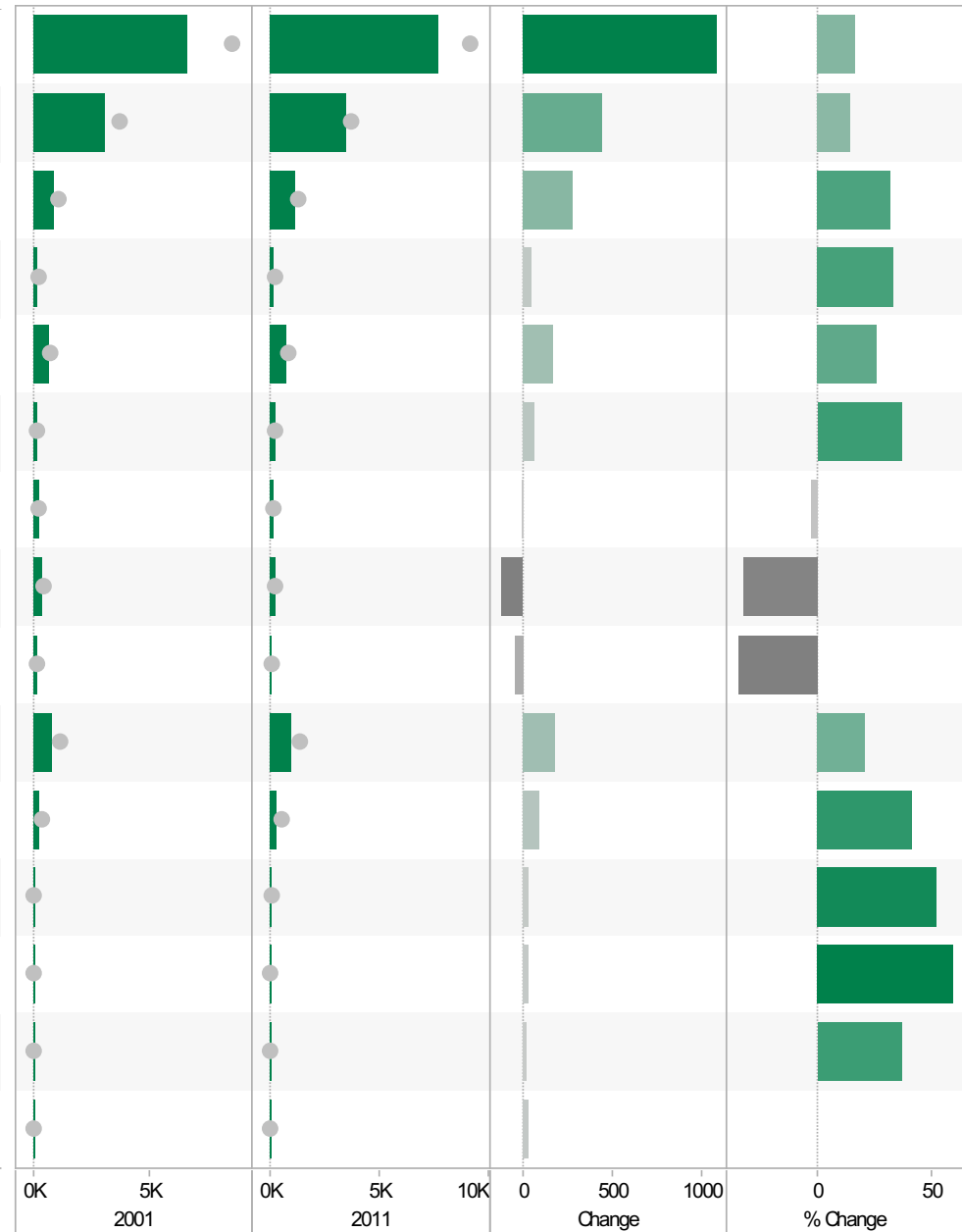


Source: Office for National Statistics (ONS), 2013.  
 Produced by the Research and Insight Team, Leicestershire County Council.

**Sileby and the Wolds\* ED**  
**KS601EW : Economic Activity, 2001-11**

**Coloured bar** - data for Electoral Division  
**Grey circle** - average for all Leicestershire Electoral Divisions

	2001	2011	Change	% Change
All usual residents aged 16 and over	6,614	7,690	1,076	16
Economically active: Employee: Full-time	3,038	3,477	439	14
Economically active: Employee: Part-time	885	1,165	280	32
Economically active: Full-time student	125	167	42	34
Economically active: Self-employed	643	812	169	26
Economically active: Unemployed	179	245	66	37
Economically inactive: Long-term sick or disabled	200	194	-6	-3
Economically inactive: Looking after home or family	379	253	-126	-33
Economically inactive: Other	135	87	-48	-36
Economically inactive: Retired	820	993	173	21
Economically inactive: Student (including full-time students)	210	297	87	41
Long-term unemployed	54	82	28	52
Unemployed: Age 16 to 24	44	70	26	59
Unemployed: Age 50 and over	38	52	14	37
Unemployed: Never worked	0	29	29	

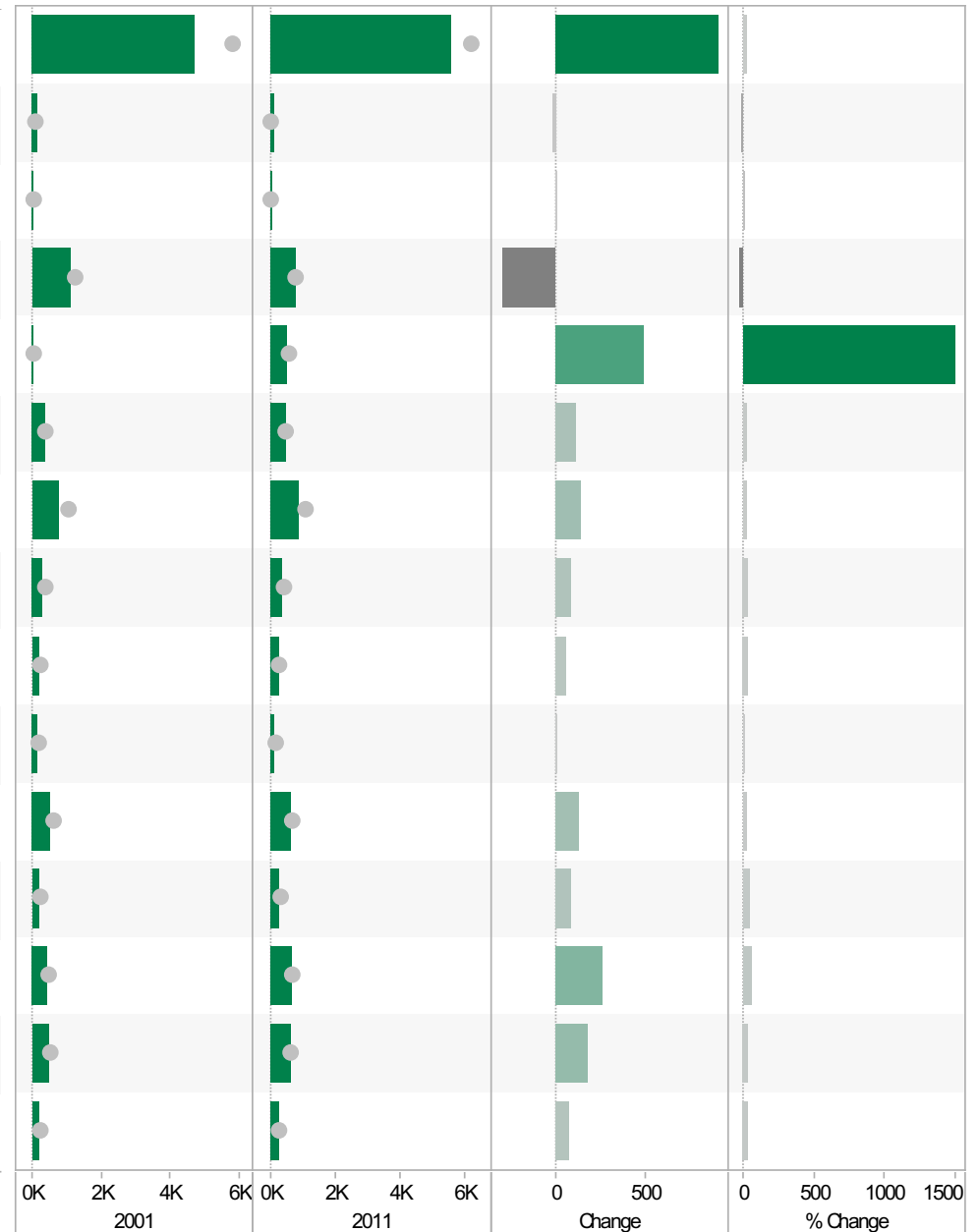


Source: Office for National Statistics (ONS), 2013.  
 Produced by the Research and Insight Team, Leicestershire County Council.

**Sileby and the Wolds\* ED**  
**KS605EW : Industry, 2001-11**

**Coloured bar** - data for Electoral Division  
**Grey circle** - average for all Leicestershire Electoral Divisions

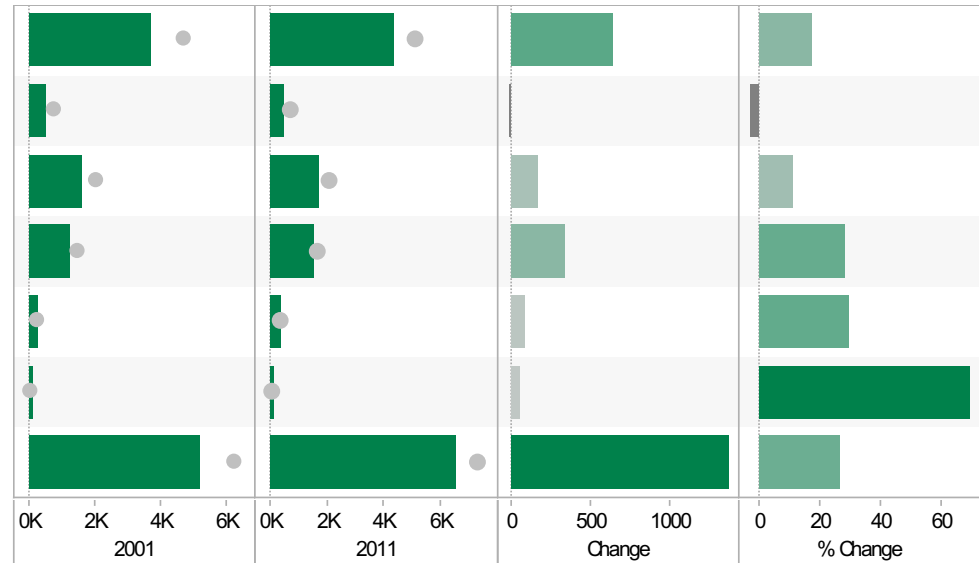
	2001	2011	Change	% Change
All usual residents aged 16 and over in employment	4,681	5,587	906	19
A Agriculture, forestry and fishing	122	106	-16	-13
B Mining and quarrying	28	27	-1	-4
C Manufacturing	1,087	788	-299	-28
D, F Electricity, gas, steam, air conditioning supply, water and sewerage	33	525	492	1,491
F Construction	375	484	109	29
G Wholesale and retail trade; repair of motor vehicles and motor cycles	741	886	145	20
H, J Transport, storage, information and communication	290	380	90	31
I Accommodation and food service activities	188	248	60	32
K Financial and insurance activities	112	121	9	8
L, M, N Real estate activities Professional, scientific and technical activities Administrative and support service activities	486	621	135	28
O Public administration and defence; compulsory social security	181	267	86	48
P Education	403	661	258	64
Q Human health and social work activities	441	623	182	41
R, S, T, U Other	194	272	78	40



Source: Office for National Statistics (ONS), 2013.  
 Produced by the Research and Insight Team, Leicestershire County Council.

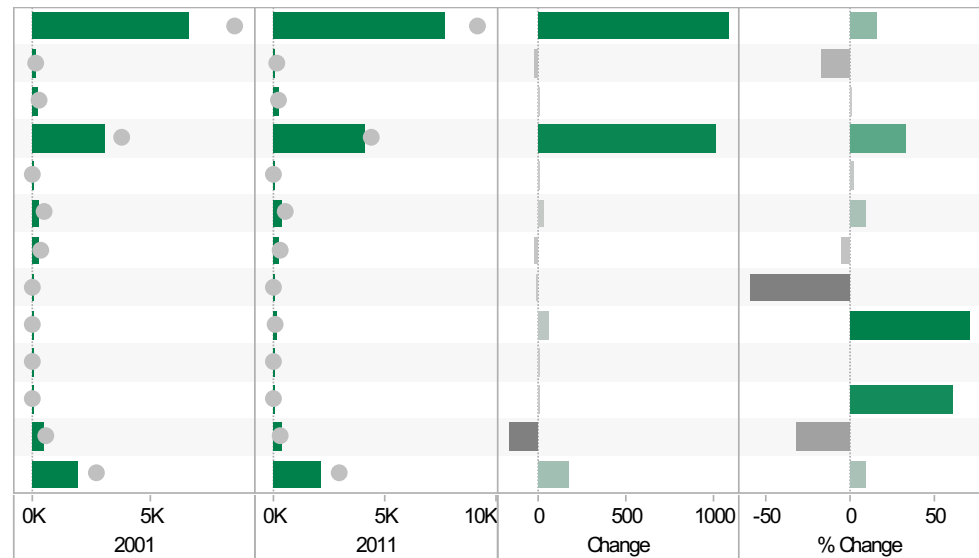
**Sileby and the Wolds\* ED**  
**KS404EW : Car and Van Availability, 2001-11**

	2001	2011	Change	% Change
All Households	3,666	4,301	635	17
No Cars or Vans in Household	520	503	-17	-3
1 Car or Van in Household	1,583	1,755	172	11
2 Cars or Vans in Household	1,215	1,560	345	28
3 Cars or Vans in Household	267	346	79	30
4 or More Cars or Vans in Household	81	137	56	69
All Cars or Vans in the Area	5,167	6,535	1,368	26



**Sileby and the Wolds\* ED**  
**QS701EW : Method of Travel to Work, 2001-11**

	2001	2011	Change	% Change
All Usual Residents Aged 16 to 74	6,611	7,690	1,079	16
Bicycle	125	104	-21	-17
Bus, Minibus or Coach	223	223	0	0
Driving a Car or Van	3,083	4,094	1,011	33
Motorcycle, Scooter or Moped	58	59	1	2
On Foot	315	343	28	9
Passenger in a Car or Van	254	241	-13	-5
Taxi	10	4	-6	-60
Train	83	142	59	71
Underground, Metro, Light Rail, Tram	0	4	4	
Other Method of Travel to Work	18	29	11	61
Work Mainly at or From Home	510	344	-166	-33
Not in Employment	1,932	2,103	171	9



Source: Office for National Statistics (ONS), 2013.  
 Produced by the Research and Insight Team, Leicestershire County Council.

If you require information contained in this leaflet in another version e.g. large print, Braille, tape or alternative language please telephone: 0116 305 6803, Fax: 0116 305 7271 or Minicom: 0116 305 6160.

ਜੇ ਆਪ ਆ ਮਾਭਿਨੀ ਆਪਨੀ ਆਧਾਮਾਂ ਸਮਝਵਾਮਾਂ ਥੋੜੀ ਮਦਦ ਈਝਤਾਂ ਡੋ ਤੋ 0116 305 6803 ਨੰਬਰ ਪਰ ਫ਼ੋਨ ਕਰਥੋ ਅਨੇ ਅਮੇ ਆਪਨੇ ਮਦਦ ਕਰਵਾ ਆਵਥਾ ਕਰੀਥੁੰ.

ਜੇਕਰ ਤੁਹਾਨੂੰ ਇਸ ਜਾਣਕਾਰੀ ਨੂੰ ਸਮਝਣ ਵਿਚ ਕੁਝ ਮਦਦ ਚਾਹੀਦੀ ਹੈ ਤਾਂ ਕਿਰਪਾ ਕਰਕੇ 0116 305 6803 ਨੰਬਰ ਤੇ ਫ਼ੋਨ ਕਰੋ ਅਤੇ ਅਸੀਂ ਤੁਹਾਡੀ ਮਦਦ ਲਈ ਕਿਸੇ ਦਾ ਪ੍ਰਬੰਧ ਕਰ ਦਵਾਂਗੇ।

এই তথ্য নিজের ভাষায় বুঝার জন্য আপনার যদি কোন সাহায্যের প্রয়োজন হয়, তবে 0116 305 6803 এই নম্বরে ফোন করলে আমরা উপযুক্ত ব্যক্তির ব্যবস্থা করবো।

اگر آپ کو یہ معلومات سمجھنے میں کچھ مدد درکار ہے تو براہ مہربانی اس نمبر پر کال کریں اور ہم آپ کی مدد کے لئے کسی کا انتظام کر دیں گے۔ 0116 305 6803

假如閣下需要幫助，用你的語言去明白這些資訊，請致電 0116 305 6803，我們會安排有關人員為你提供幫助。

Jeżeli potrzebujesz pomocy w zrozumieniu tej informacji w Twoim języku, zadzwoń pod numer 0116 305 6803, a my Ci dopomożemy.

Research & Insight Team  
Strategy, Partnerships & Communities  
Chief Executive's Department  
Leicestershire County Council  
County Hall  
Glenfield  
Leicester  
LE3 8RA

[ri@leics.gov.uk](mailto:ri@leics.gov.uk)  
[www.lsr-online.org](http://www.lsr-online.org)