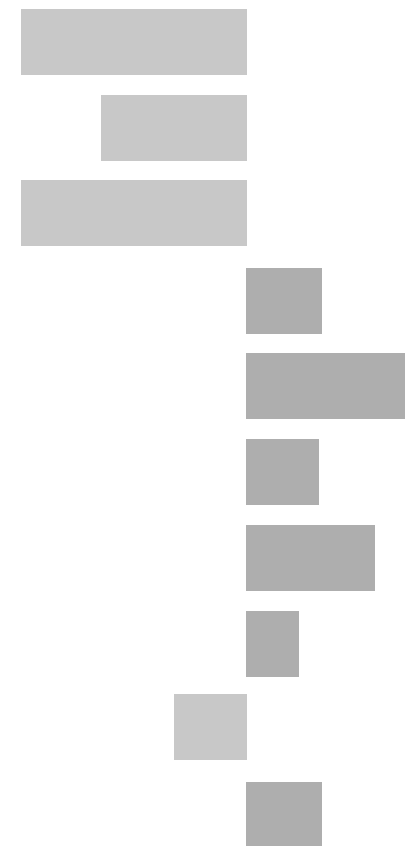


Cosby and Countesthorpe Electoral Division

2011 Census Key Statistics

Alex Lea
May 2013

Research and Insight Team
Leicestershire County Council



Alex Lea

Research & Insight Manager

Research & Insight Team
Strategy, Partnerships & Communities
Leicestershire County Council
County Hall
Glenfield
Leicester LE3 8RB

Tel 0116 305 6803

Email alex.lea@leics.gov.uk

Produced by the Research and Insight Team at Leicestershire County Council.

Whilst every effort has been made to ensure the accuracy of the information contained within this report, Leicestershire County Council cannot be held responsible for any errors or omission relating to the data contained within the report.

CONTENTS

Introduction

About this Report	4
2011 Census	4
Data	5
Census Geography	5
Indicator Changes 2001-11	6

Population

KS101EW - Usual Resident Population	7
KS102EW - Age Structure	7

Households

KS105EW - Household Composition	8
KS402EW - Tenure	9

Health and Caring

KS301EW - Health and Provision of Unpaid Care	9
---	---

Ethnicity

KS201EW - Ethnic Group	10
------------------------	----

Economy

KS601EW - Economic Activity	11
KS605EW - Industry	12

Transport

KS404EW - Car and Van Availability	13
QS701EW - Method of Travel to Work	13

INTRODUCTION

ABOUT THIS REPORT

This report provides a broad overview of the 2011 Census Key Statistics data, released by the Office for National Statistics on 30th January 2013, as part of the Second Release. This report summarises a selection of key headline datasets of this release for Leicestershire Electoral Divisions (EDs).

The Research and Insight Team at Leicestershire County Council has used data from the Second release to create an interactive Tableau dashboard containing 32 datasets covering the following geographies:

- England
- East Midlands
- East Midlands counties . Including Leicestershire
- Leicester City and Rutland Unitary Authorities
- Leicestershire districts

In addition, a headline report covers the results for Leicestershire and the seven districts that make up the county. The dashboard and report are available at the following links:

Census 2011 Key Statistics Dashboard

<http://public.tableausoftware.com/views/LAKeyStatsDashboard/Dashboard>

May 2013

Census 2011 Key Statistics Headline Report

http://www.lsr-online.org/reports/census_2011_key_statistics_headline_report/download/1/Census%202011%20Second%20Release%20FINAL.pdf

2011 CENSUS

Census statistics help paint a picture of the nation and how we live. They provide a detailed snapshot of the population and its characteristics, and underpin funding allocation to provide public services.¹ Data from the 2011 Census is made available at a variety of different levels of geography and in various releases.

The Key Statistics data covers a broad range of socio-economic topics, including data on ethnicity, health and employment. Each Key Statistic dataset is referred to by its unique three-digit code with the 'KS' prefix to denote a Key statistic (e.g. KS101). These are used throughout the report.

A full list of the 35 Key Statistics data tables are available here:

<http://www.ons.gov.uk/ons/publications/re-reference-tables.html?edition=tcm%3A77-286262>

¹ Office for National Statistics (ONS), 2013.

Further results from the census will be released throughout 2013, for more information, please visit:

<http://www.lsr-online.org/census-2011.html>

More information on the 2011 Census can be found here:

<http://www.ons.gov.uk/ons/guide-method/census/2011/index.html>

DATA

Data has been compiled for Leicestershire Electoral Divisions, covering the key datasets from the 2011 Census Key statistics.

Figures for 2011 and 2001 are included, along with the overall and percentage change between the two censuses. Data for each indicator is presented in a table and chart.

Population data is displayed in a table, a population pyramid and a chart showing percentage change between 2001 and 2011. All other data is displayed in tables, and charts. Charts for change between 2001 and 2011 are coloured according to the degree of change between the two censuses; grey corresponds to smallest change and green the largest change. A marker indicates the average figure for all Leicestershire Electoral Divisions.

GEOGRAPHY

Maps for all County Council Electoral Divisions can be found here:

http://www.leics.gov.uk/index/your_council/local_democracy/conductofcouncillorsandemployees/electoraldivisionmapsindex/electoraldivisionmaps.htm

As Census data is not made available for Electoral Divisions, smaller areas, called Lower Super Output Areas (LSOAs) have been used as building blocks for the figures included in this report. LSOAs are small parcels of geography, containing a minimum of 1,000 people, a maximum of 3,000 and an average of 1,500. LSOAs were initially developed for the 2001 Census and are used to release a range of neighbourhood-level datasets from various sources. There are 396 LSOAs in Leicestershire.

In some instances, LSOAs do not fit neatly within Electoral Divisions and in these cases, population weighted centroids - representing the 'centre of gravity' for population within an area - have been used in order to assign each LSOA to an Electoral Division. Electoral Divisions that fall within this category are indicated with a (*).

More information on Lower Super Output Areas can be found here:

<http://www.ons.gov.uk/ons/guide-method/geography/beginner-s-guide/census/super-output-areas--soas-/index.html>

INDICATOR CHANGES 2001-11

The following questions were asked in slightly different ways in 2011 compared to 2001. As such, care should be taken when making comparison between years.

KS201EW : Ethnic Group

Asian/Asian British: Chinese
Mixed/multiple ethnic group: Other Mixed
Mixed/multiple ethnic group: White and Asian
Mixed/multiple ethnic group: White and Black African
Mixed/multiple ethnic group: White and Black Caribbean
Other ethnic group: Any other ethnic group
White: English/Welsh/Scottish/Northern Irish/British
White: Other White

KS301EW : Health and Provision of Unpaid Care

Day-to-day activities limited
Day-to-day activities limited: Age 16 to 64
Day-to-day activities not limited
Fair health
Very/ bad Health
Very/ good Health

KS601EW : Economic Activity

All usual residents aged 16 and over
Economically active: Employee: Full-time
Economically active: Employee: Part-time
Economically active: Full-time student

Economically active: Self-employed
Economically active: Unemployed
Economically inactive: Long-term sick or disabled
Economically inactive: Looking after home or family
Economically inactive: Other
Economically inactive: Retired
Economically inactive: Student (including full-time)
Long-term unemployed
Unemployed: Age 50 and over
Unemployed: Never worked

KS605EW : Industry

All usual residents aged 16 and over in employment
A Agriculture, forestry and fishing
B Mining and quarrying
C Manufacturing
D, F Electricity, gas, steam, air conditioning supply etc
F Construction
G Wholesale and retail trade; repair of motor vehicles etc
H, J Transport, storage, information and communication
I Accommodation and food service activities
K Financial and insurance activities
L,M,N Real estate activities Professional, scientific etc
O Public administration and defence etc
P Education
Q Human health and social work activities
R, S, T, U Other

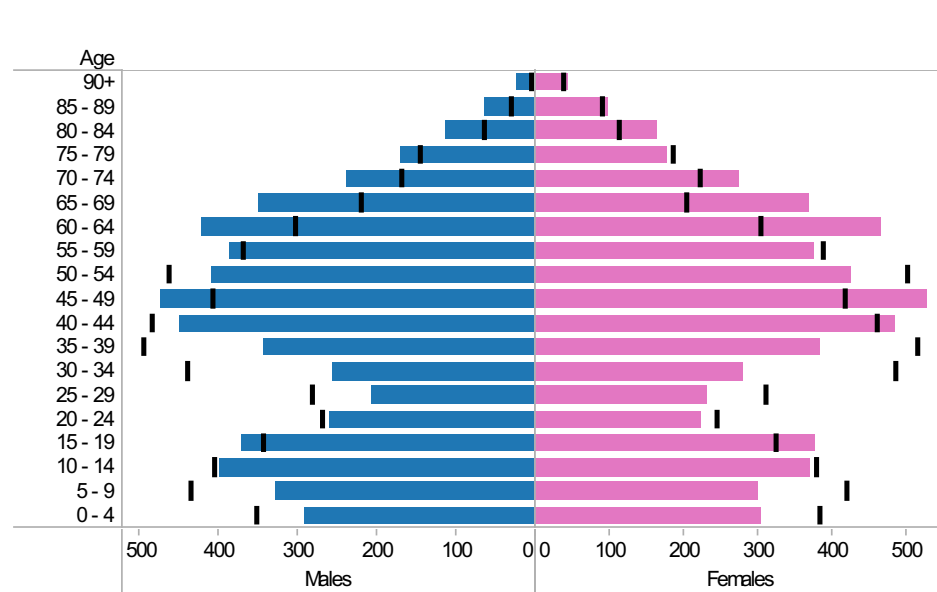
Cosby and Countesthorpe ED: KS101EW : Usual Resident Population, KS102EW : Age Structure

■ Males
 ■ Females
 ■ Persons

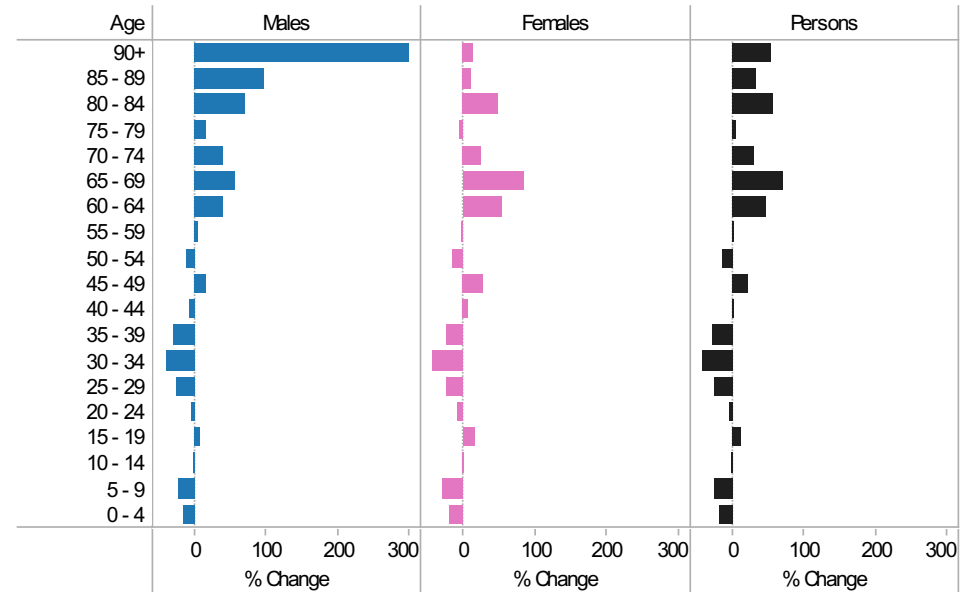
2001-11 Population by sex and quinary age band

Age	Males			Females			Persons		
	2001	2011	Change 2001-11	2001	2011	Change 2001-11	2001	2011	Change 2001-11
90+	6	24	18	37	42	5	43	66	23
85 - 89	32	63	31	88	97	9	120	160	40
80 - 84	66	113	47	111	164	53	177	277	100
75 - 79	147	170	23	184	176	-8	331	346	15
70 - 74	170	238	68	220	274	54	390	512	122
65 - 69	222	349	127	201	368	167	423	717	294
60 - 64	304	422	118	302	464	162	606	886	280
55 - 59	371	386	15	386	374	-12	757	760	3
50 - 54	464	408	-56	498	423	-75	962	831	-131
45 - 49	408	472	64	414	527	113	822	999	177
40 - 44	485	449	-36	457	483	26	942	932	-10
35 - 39	497	342	-155	513	383	-130	1,010	725	-285
30 - 34	440	256	-184	484	278	-206	924	534	-390
25 - 29	283	207	-76	309	232	-77	592	439	-153
20 - 24	271	260	-11	242	223	-19	513	483	-30
15 - 19	345	371	26	322	376	54	667	747	80
10 - 14	407	399	-8	377	370	-7	784	769	-15
5 - 9	436	329	-107	418	300	-118	854	629	-225
0 - 4	354	292	-62	382	304	-78	736	596	-140
All Ages	5,708	5,550	-158	5,945	5,858	-87	11,653	11,408	-245

2011 (coloured bars) and 2001 (black marks) population by sex and quinary age



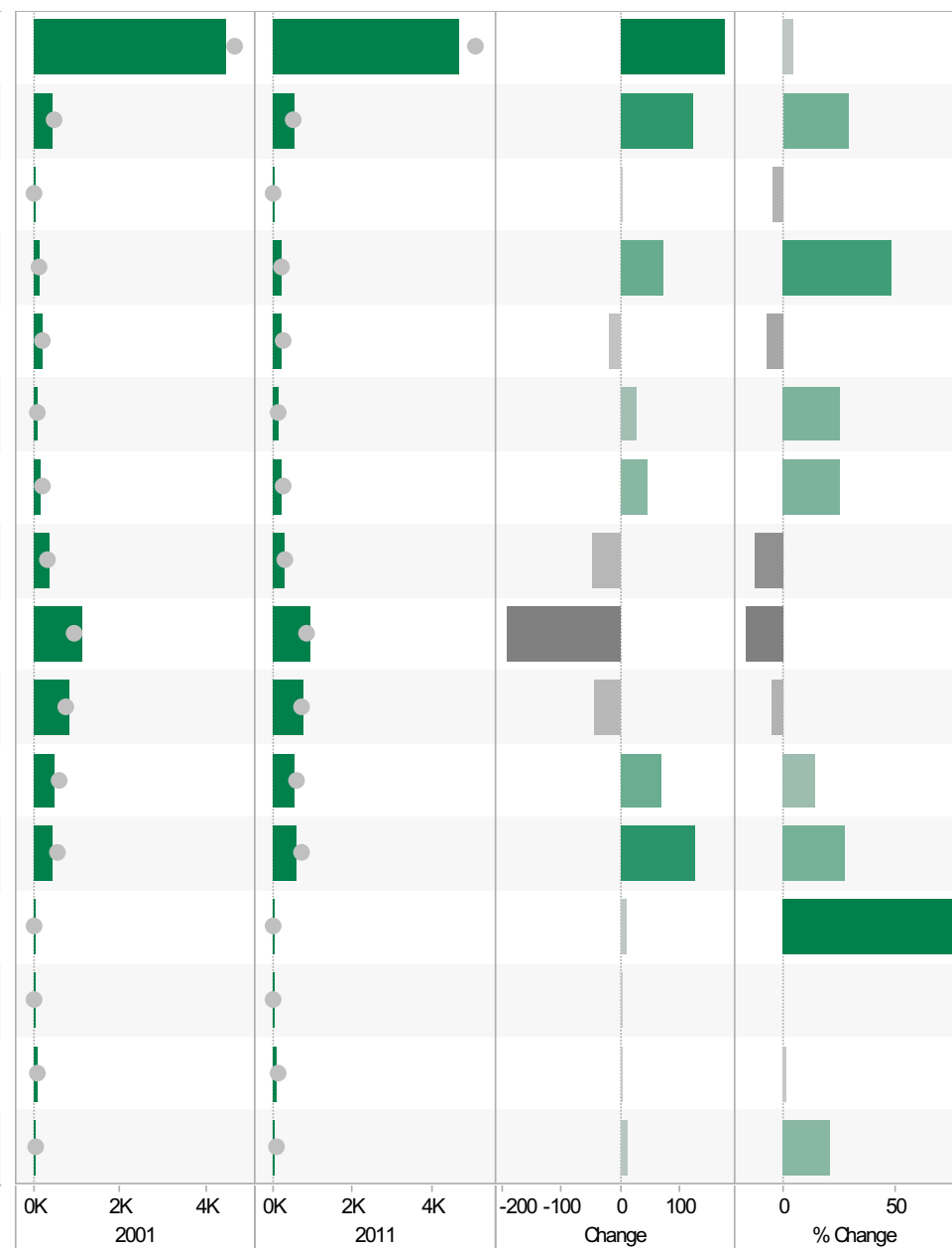
2001-11 Percentage change by sex and quinary age band



Cosby and Countesthorpe ED
KS105EW : Household Composition, 2001-11

Coloured bar - data for Electoral Division
Grey circle - average for all Leicestershire Electoral Divisions

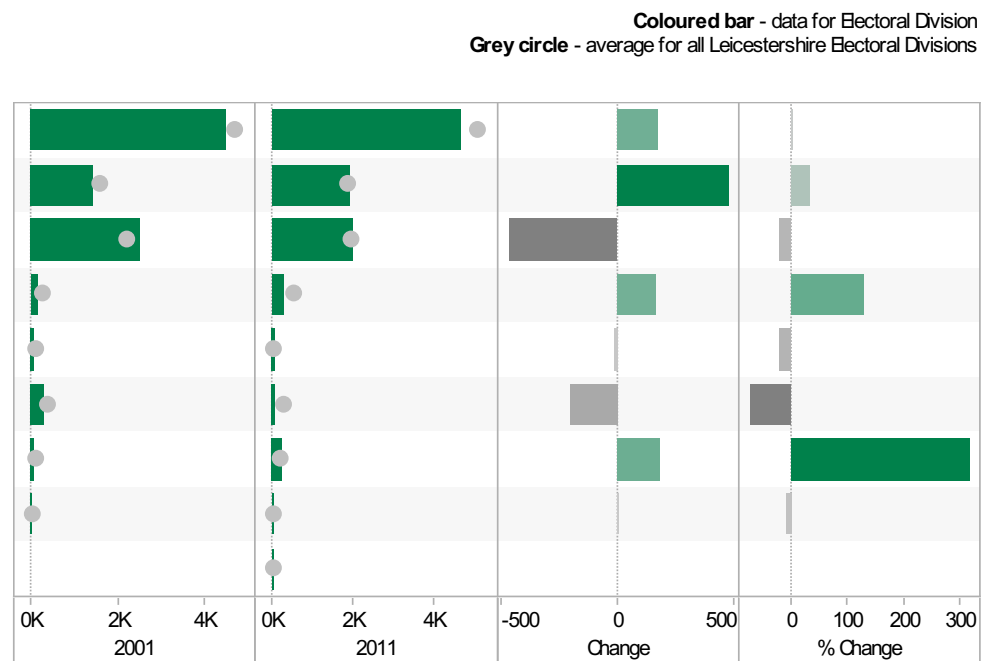
	2001	2011	Change	% Change
All Households	4,495	4,669	174	4
One Family Only; All Aged 65 and Over	427	549	122	29
One Family Only; Cohabiting Couple; All Children Non-Dependent	20	19	-1	-5
One Family Only; Cohabiting Couple; Dependent Children	145	215	70	48
One Family Only; Cohabiting Couple; No Children	225	207	-18	-8
One Family Only; Lone Parent; All Children Non-Dependent	105	131	26	25
One Family Only; Lone Parent; Dependent Children	182	227	45	25
One Family Only; Married or Same-Sex Civil Partnership Couple; All Children Non-Dependent	365	317	-48	-13
One Family Only; Married or Same-Sex Civil Partnership Couple; Dependent Children	1,128	935	-193	-17
One Family Only; Married or Same-Sex Civil Partnership Couple; No Children	814	770	-44	-5
One Person Household; Aged 65 and Over	481	549	68	14
One Person Household; Other	460	586	126	27
Other Household Types; All Aged 65 and Over	10	18	8	80
Other Household Types; All Full-Time Students	0	0	0	
Other Household Types; Other	75	76	1	1
Other Household Types; With Dependent Children	58	70	12	21



Source: Office for National Statistics (ONS), 2013.
 Produced by the Research and Insight Team, Leicestershire County Council.

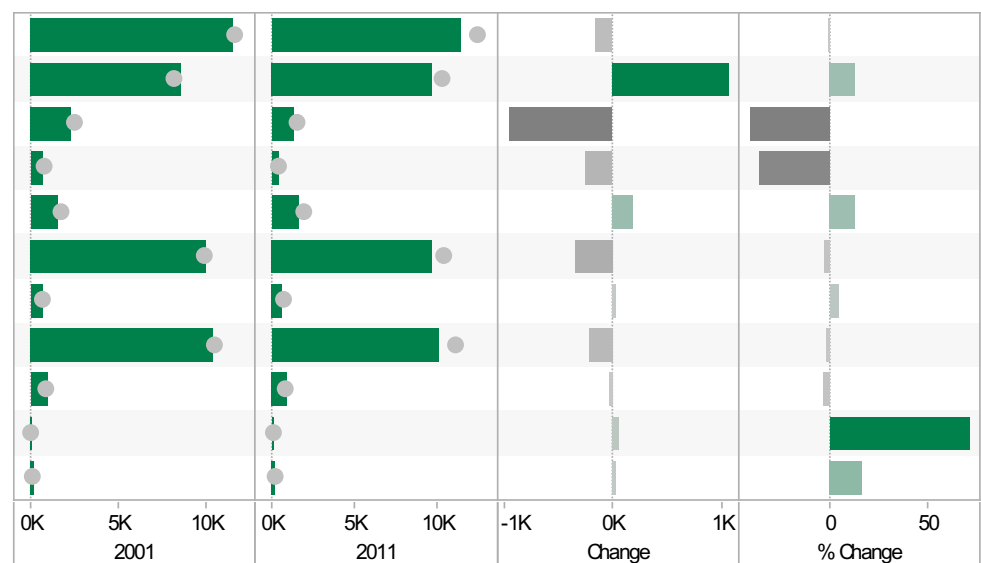
Cosby and Countesthorpe ED KS402EW: Tenure, 2001-11

	2001	2011	Change	% Change
All Households	4,498	4,669	171	4
Owned; Owned Outright	1,432	1,905	473	33
Owned; Owned with a Mortgage or Loan	2,497	2,027	-470	-19
Private Rented; Private Landlord or Letting Agency	128	294	166	130
Private Rented; Other	78	62	-16	-21
Social Rented; Rented from Council (Local Authority)	282	79	-203	-72
Social Rented; Other	57	237	180	316
Shared Ownership (Part Owned and Part Rented)	24	22	-2	-8
Living Rent Free		43		



Cosby and Countesthorpe ED KS301EW: Health and Provision of Unpaid Care, 2001-11

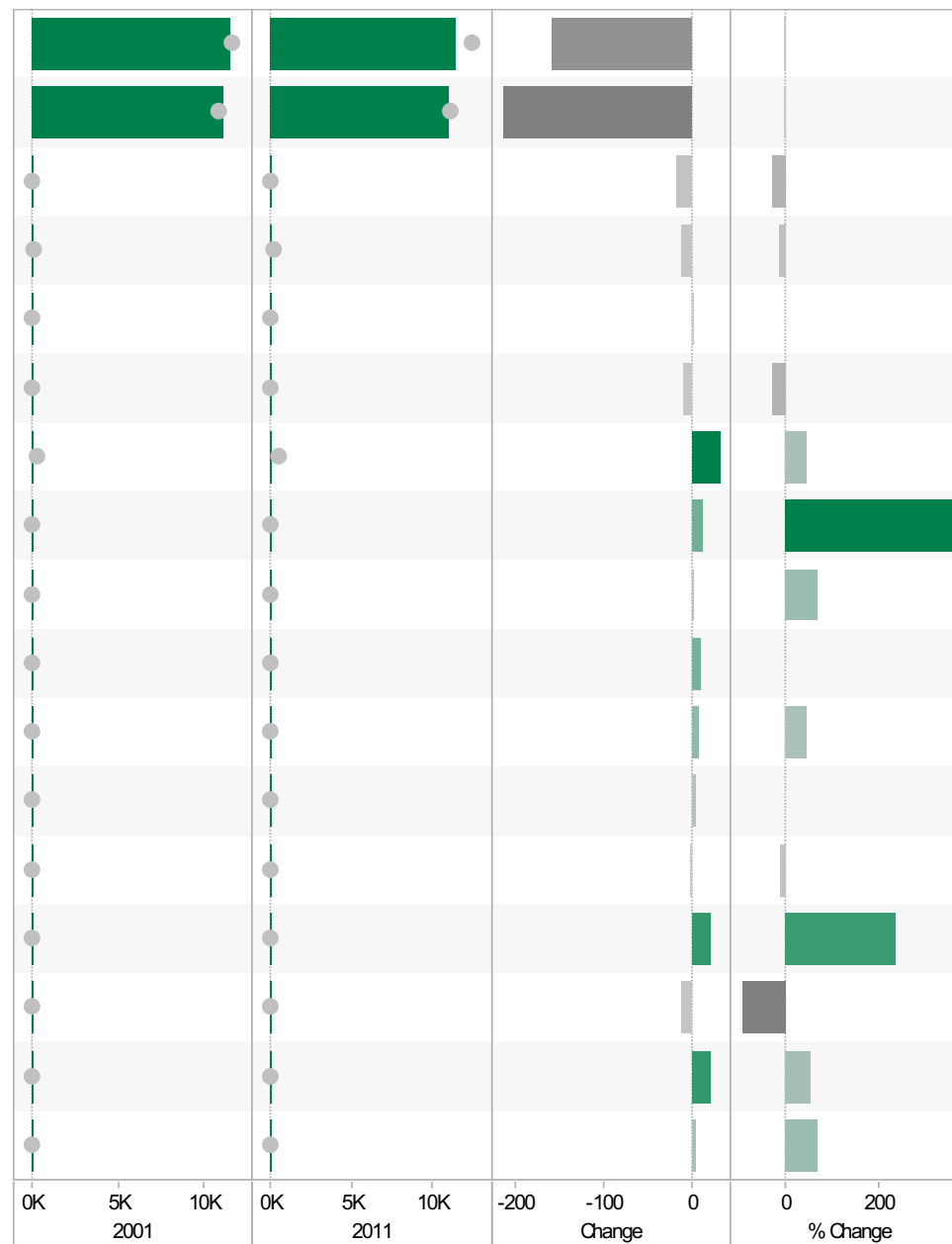
	2001	2011	Change	% Change
All usual residents	11,567	11,408	-159	-1
Very/ good Health	8,584	9,643	1,059	12
Fair health	2,284	1,325	-959	-42
Very/ bad Health	699	440	-259	-37
Day-to-day activities limited	1,524	1,712	188	12
Day-to-day activities not limited	10,043	9,696	-347	-3
Day-to-day activities limited a lot: Age 16 to 64	663	689	26	4
Provides no unpaid care	10,336	10,121	-215	-2
Provides 1 to 19 hours unpaid care a week	948	914	-34	-4
Provides 20 to 49 hours unpaid care a week	78	134	56	72
Provides 50 or more hours unpaid care a week	205	239	34	17



Cosby and Countesthorpe ED
KS201EW : Ethnic Group, 2001-11

Coloured bar - data for Electoral Division
Grey circle - average for all Leicestershire Electoral Divisions

	2001	2011	Change	% Change
All usual residents	11,566	11,408	-158	-1
White: English/Welsh/Scottish/Northern Irish/British	11,180	10,966	-214	-2
White: Irish	64	46	-18	-28
White: Other White	108	96	-12	-11
Asian/Asian British: Bangladeshi	0	0	0	
Asian/Asian British: Chinese	37	27	-10	-27
Asian/Asian British: Indian	65	96	31	48
Asian/Asian British: Other Asian	3	14	11	367
Asian/Asian British: Pakistani	3	5	2	67
Black/African/Caribbean/Black British: African	0	10	10	
Black/African/Caribbean/Black British: Caribbean	15	22	7	47
Black/African/Caribbean/Black British: Other Black	0	3	3	
Mixed/multiple ethnic group: Other Mixed	23	21	-2	-9
Mixed/multiple ethnic group: White and Asian	9	30	21	233
Mixed/multiple ethnic group: White and Black African	13	1	-12	-92
Mixed/multiple ethnic group: White and Black Caribbean	40	61	21	53
Other ethnic group: Any other ethnic group	6	10	4	67

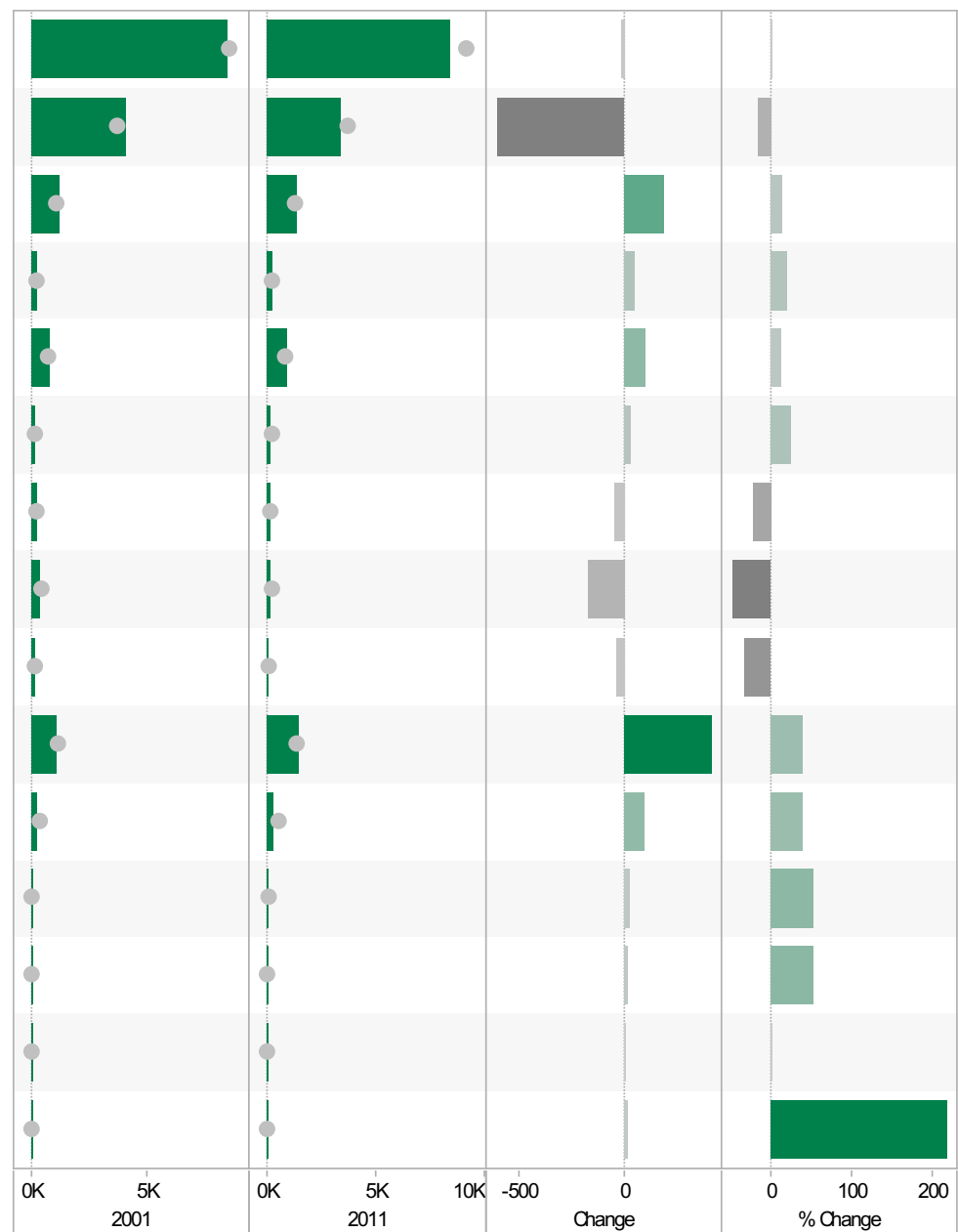


Source: Office for National Statistics (ONS), 2013.
 Produced by the Research and Insight Team, Leicestershire County Council.

Cosby and Countesthorpe ED
KS601EW : Economic Activity, 2001-11

Coloured bar - data for Electoral Division
Grey circle - average for all Leicestershire Electoral Divisions

	2001	2011	Change	% Change
All usual residents aged 16 and over	8,427	8,409	-18	0
Economically active: Employee: Full-time	4,039	3,430	-609	-15
Economically active: Employee: Part-time	1,230	1,413	183	15
Economically active: Full-time student	210	252	42	20
Economically active: Self-employed	802	899	97	12
Economically active: Unemployed	135	168	33	24
Economically inactive: Long-term sick or disabled	207	161	-46	-22
Economically inactive: Looking after home or family	374	198	-176	-47
Economically inactive: Other	128	86	-42	-33
Economically inactive: Retired	1,073	1,483	410	38
Economically inactive: Student (including full-time students)	229	319	90	39
Long-term unemployed	38	58	20	53
Unemployed: Age 16 to 24	34	52	18	53
Unemployed: Age 50 and over	43	44	1	2
Unemployed: Never worked	6	19	13	217

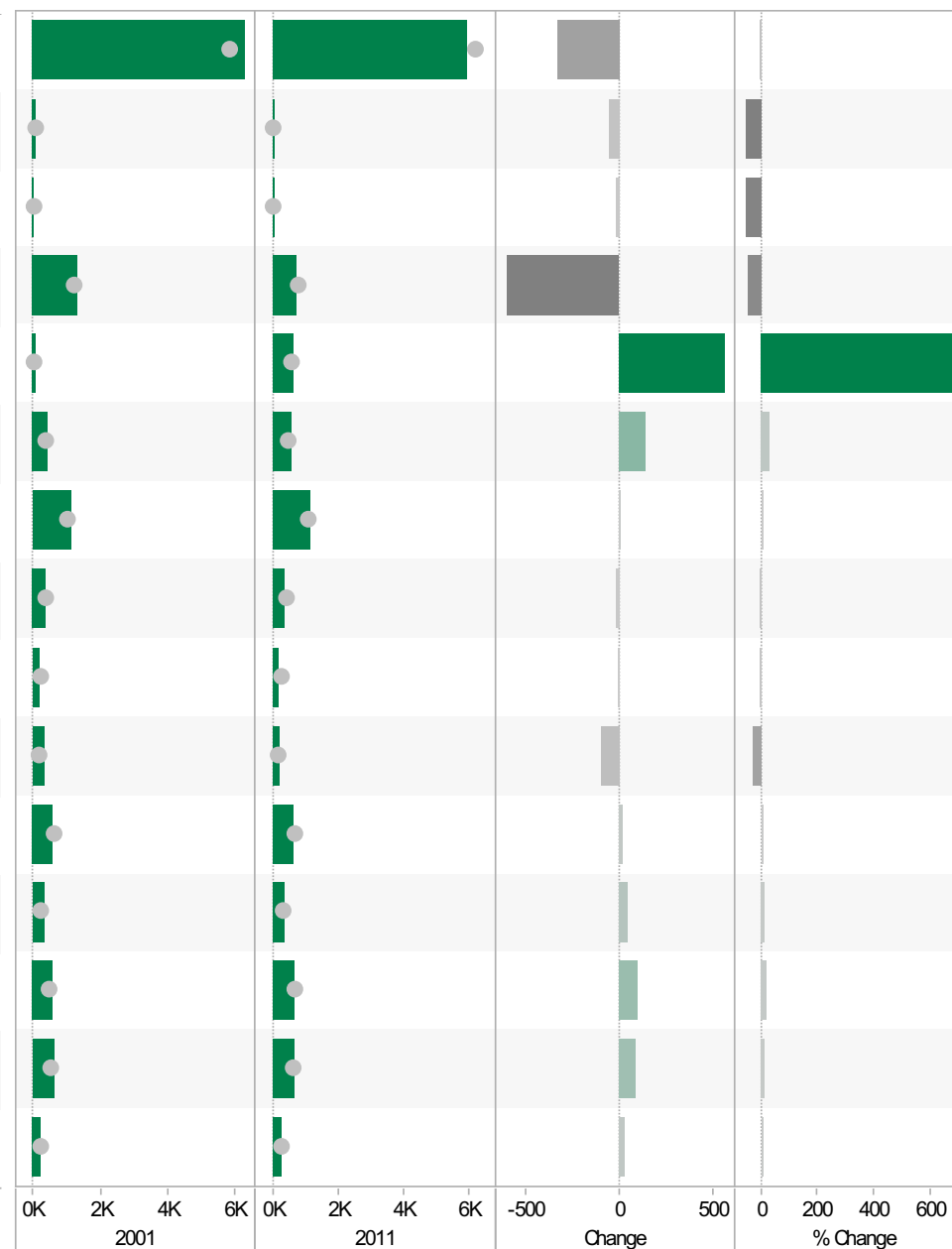


Source: Office for National Statistics (ONS), 2013.
 Produced by the Research and Insight Team, Leicestershire County Council.

Cosby and Countesthorpe ED
KS605EW : Industry, 2001-11

Coloured bar - data for Electoral Division
Grey circle - average for all Leicestershire Electoral Divisions

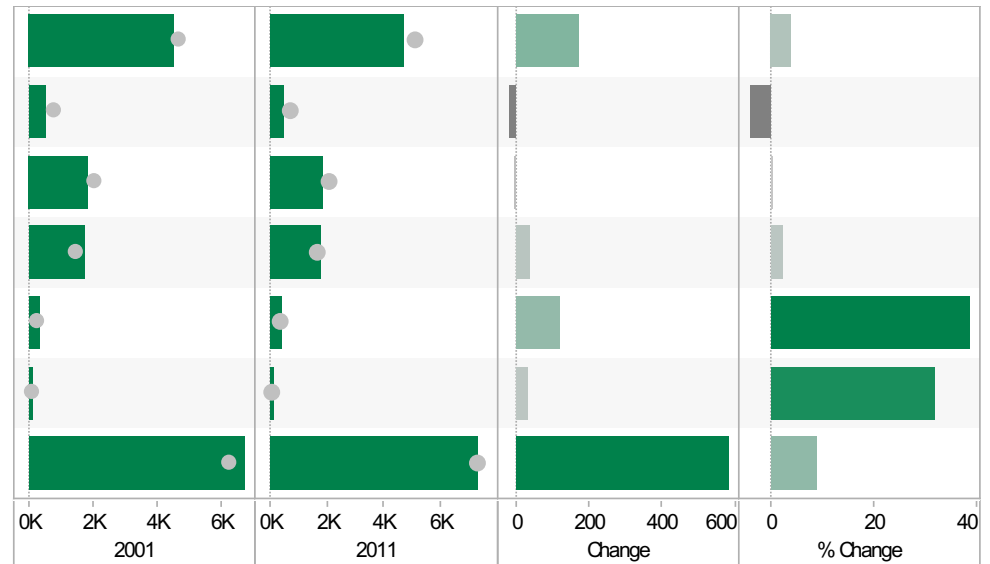
	2001	2011	Change	% Change
All usual residents aged 16 and over in employment	6,266	5,941	-325	-5
A Agriculture, forestry and fishing	93	43	-50	-54
B Mining and quarrying	30	15	-15	-50
C Manufacturing	1,309	709	-600	-46
D, F Electricity, gas, steam, air conditioning supply, water and sewerage	78	635	557	714
F Construction	416	558	142	34
G Wholesale and retail trade; repair of motor vehicles and motor cycles	1,115	1,123	8	1
H, J Transport, storage, information and communication	382	368	-14	-4
I Accommodation and food service activities	191	185	-6	-3
K Financial and insurance activities	331	237	-94	-28
L, M, N Real estate activities Professional, scientific and technical activities Administrative and support service activities	594	612	18	3
O Public administration and defence; compulsory social security	317	363	46	15
P Education	566	667	101	18
Q Human health and social work activities	612	701	89	15
R, S, T, U Other	232	255	23	10



Source: Office for National Statistics (ONS), 2013.
 Produced by the Research and Insight Team, Leicestershire County Council.

Cosby and Countesthorpe ED
KS404EW : Car and Van Availability, 2001-11

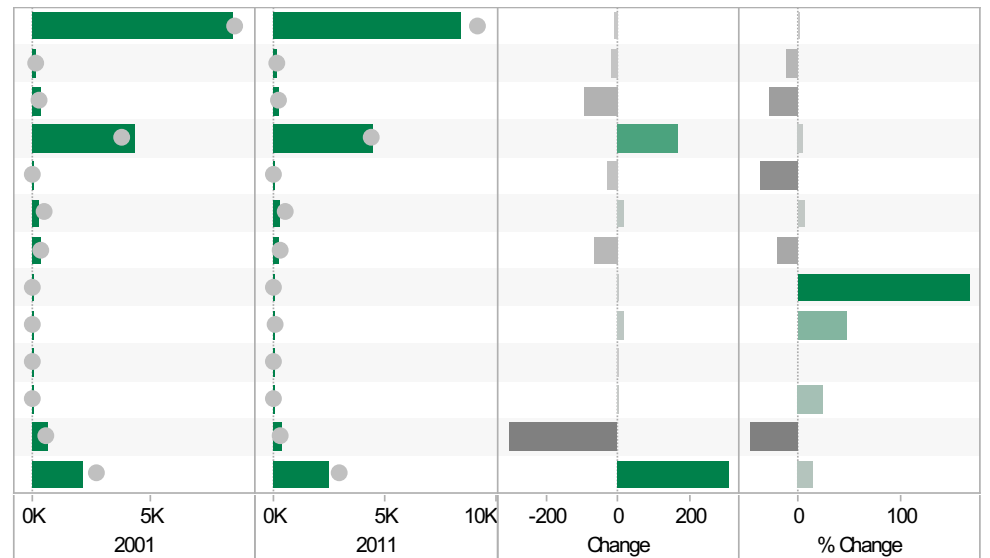
	2001	2011	Change	% Change
All Households	4,500	4,669	169	4
No Cars or Vans in Household	500	479	-21	-4
1 Car or Van in Household	1,845	1,842	-3	0
2 Cars or Vans in Household	1,733	1,771	38	2
3 Cars or Vans in Household	318	440	122	38
4 or More Cars or Vans in Household	104	137	33	32
All Cars or Vans in the Area	6,710	7,291	581	9



Coloured bar - data for Electoral Division
 Grey circle - average for all Leicestershire Electoral Divisions

Cosby and Countesthorpe ED
QS701EW : Method of Travel to Work, 2001-11

	2001	2011	Change	% Change
All Usual Residents Aged 16 to 74	8,421	8,409	-12	0
Bicycle	177	155	-22	-12
Bus, Minibus or Coach	350	253	-97	-28
Driving a Car or Van	4,313	4,478	165	4
Motorcycle, Scooter or Moped	83	52	-31	-37
On Foot	311	328	17	5
Passenger in a Car or Van	330	261	-69	-21
Taxi	3	8	5	167
Train	32	47	15	47
Underground, Metro, Light Rail, Tram	0	0	0	
Other Method of Travel to Work	17	21	4	24
Work Mainly at or From Home	642	338	-304	-47
Not in Employment	2,163	2,468	305	14



Source: Office for National Statistics (ONS), 2013.
 Produced by the Research and Insight Team, Leicestershire County Council.

If you require information contained in this leaflet in another version e.g. large print, Braille, tape or alternative language please telephone: 0116 305 6803, Fax: 0116 305 7271 or Minicom: 0116 305 6160.

ਜੇ ਆਪ ਆ ਮਾਭਿਨੀ ਆਪਨੀ ਆਧਾਮਾਂ ਸਮਝਵਾਮਾਂ ਥੋੜੀ ਮਦਦ ਈਝਤਾਂ ਡੋ ਤੋ 0116 305 6803 ਨੰਬਰ ਪਰ ਝੋਨ ਕਰਥੋ ਅਨੇ ਅਮੇ ਆਪਨੇ ਮਦਦ ਕਰਵਾ ਅਵਥਾ ਕਰੀਯੁੰ.

ਜੇਕਰ ਤੁਹਾਨੂੰ ਇਸ ਜਾਣਕਾਰੀ ਨੂੰ ਸਮਝਣ ਵਿਚ ਕੁਝ ਮਦਦ ਚਾਹੀਦੀ ਹੈ ਤਾਂ ਕਿਰਪਾ ਕਰਕੇ 0116 305 6803 ਨੰਬਰ ਤੇ ਫੋਨ ਕਰੋ ਅਤੇ ਅਸੀਂ ਤੁਹਾਡੀ ਮਦਦ ਲਈ ਕਿਸੇ ਦਾ ਪ੍ਰਬੰਧ ਕਰ ਦਵਾਂਗੇ।

এই তথ্য নিজের ভাষায় বুঝার জন্য আপনার যদি কোন সাহায্যের প্রয়োজন হয়, তবে 0116 305 6803 এই নম্বরে ফোন করলে আমরা উপযুক্ত ব্যক্তির ব্যবস্থা করবো।

اگر آپ کو یہ معلومات سمجھنے میں کچھ مدد درکار ہے تو براہ مہربانی اس نمبر پر کال کریں اور ہم آپ کی مدد کے لئے کسی کا انتظام کر دیں گے۔ 0116 305 6803

假如閣下需要幫助，用你的語言去明白這些資訊，請致電 0116 305 6803，我們會安排有關人員為你提供幫助。

Jeżeli potrzebujesz pomocy w zrozumieniu tej informacji w Twoim języku, zadzwoń pod numer 0116 305 6803, a my Ci dopomożemy.

Research & Insight Team
Strategy, Partnerships & Communities
Chief Executive's Department
Leicestershire County Council
County Hall
Glenfield
Leicester
LE3 8RA

ri@leics.gov.uk
www.lsr-online.org